

Doc# 257608 Fee: \$0.00 2 Pages
 Property & Public Services
 Property Records Division
 Yellow Medicine County, Minnesota
 I hereby certify that the within instrument
 was filed on May 3, 2013 at 10:40 AM

N/C
 BONNEMA SURVEYS INC
 PROFESSIONAL LAND SURVEYING
 1809 22ND STREET SW, SUITE 104
 WILLMAR, MN 56201

Janel Timm, Yellow Medicine County Recorder

By Debra Blond Deputy

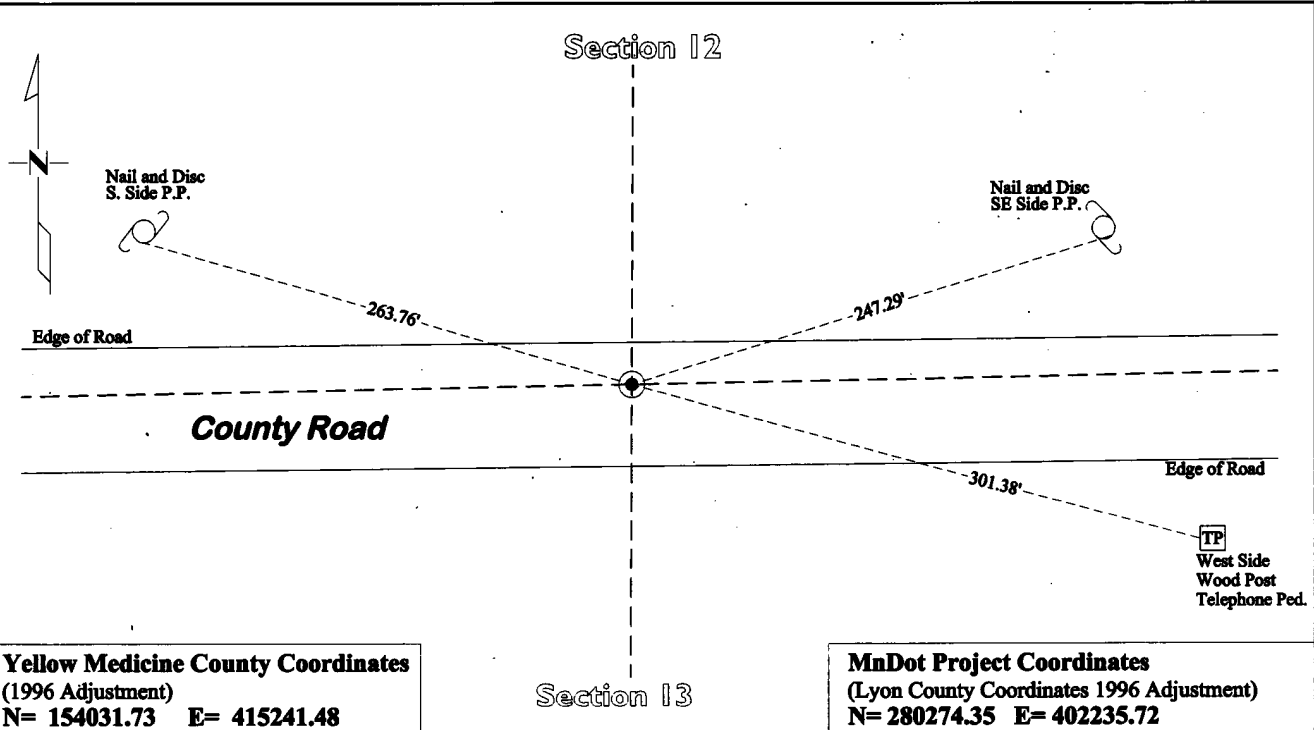
CERTIFICATE OF LOCATION OF GOVERNMENT CORNER

North Quarter Corner of Section **13**, Township **114**, Range **45**

Fifth Principal Meridian, State of Minnesota, County of **Yellow Medicine**

At the corner location shown on the sketch:

- On July 30, 2012 found No evidence of section corner monumentation
DATE
- left monument as found lowered monument removed monument (explain)
- On March 1, 2013 placed a Cast Iron Capped 2" x 30" Telspar Monument on a straight line split between
DATE
the NW and NE corners of Section 13



Statement of evidence for this corner location is on back of this page.

I hereby certify that this survey, plan, or report was prepared by me or under my direct supervision and that I am a duly Licensed Land Surveyor under the laws of the state of Minnesota.

Signature *Debra Blond*
 Date May 1, 2013

Typed or Printed Name: Debra A. Bonnema
 Reg. No. 14895

STATEMENT OF EVIDENCE

North Quarter Corner Section 13, T114N-R45W

1871

L. Harrington was contracted by the United States Government Land Office to perform the Original Public Land Survey in this township. He records in his field notes, "Set a post for ¼ sec cor raised mound as per instructions".

Sept 1940

C.E. Lange records in the Yellow Medicine County Surveyor's Record Book, page 549, "I then chained North side of section and divided ¼ and ½ chaining from East to West. No fence at ¼, but fence at ½ checked okay. He does not mention if he found or set any monumentation at this corner. He also notes distances from the northeast corner of the Section.

July 30, 2012

Duane A. Bonnema, LS 14895; while doing a re-monumentation survey for the Minnesota Department of Transportation dug a 4.5' deep hole which covered an area extending 4.5' north, 8.0' south, 3.0' east, and 3.0' west, of this section corner location. The top of original topsoil was observed at a depth of 3.0' below the surface. At a depth of 1.6 feet an old road bed was found. At a depth of 2.5' roots were found but also some pieces of light colored wood which does not look like the wood pieces recovered at other Government Corner locations in the area. No further evidence of corner monumentation was found. A cast iron capped 2" square by 30" long iron telspar monument was placed on the surface at the midpoint (lost location) between the northeast and northwest corners of this section.