

Doc# 257609 Fee: \$0.00 2 Pages
 Property & Public Services
 Property Records Division
 Yellow Medicine County, Minnesota
 I hereby certify that the within instrument
 was filed on May 3, 2013 at 10:45 AM

N/C
 BONNEMA SURVEYS INC
 PROFESSIONAL LAND SURVEYING
 1809 22ND STREET SW, SUITE 104
 WILLMAR, MN 56201

Janel Timm, Yellow Medicine County Recorder

By Debra Blood Deputy

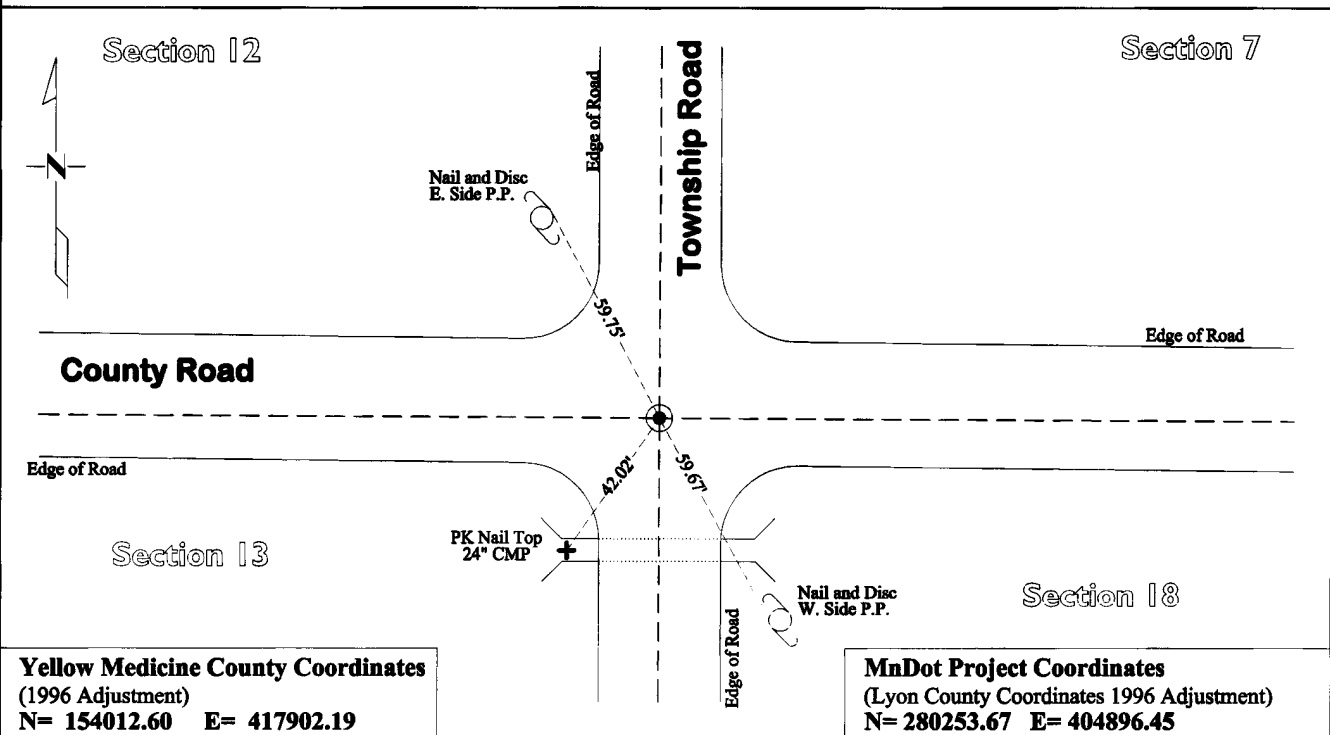
CERTIFICATE OF LOCATION OF GOVERNMENT CORNER

Northeast Corner of Section **13**, Township **114**, Range **45**

Fifth Principal Meridian, State of Minnesota, County of **Yellow Medicine**

At the corner location shown on the sketch:

- On May 23, 2012 found a 3/4" Capped Iron RLS 43844 (Bueltel) 0.5' below surface
DATE
- left monument as found lowered monument removed monument (explain)
- On Aug. 7, 2012 placed a Cast Iron Capped 2" x 30" Telspar Monument at the location of the capped
DATE
(Bueltel) iron rod



Yellow Medicine County Coordinates
 (1996 Adjustment)
 N= 154012.60 E= 417902.19

MnDot Project Coordinates
 (Lyon County Coordinates 1996 Adjustment)
 N= 280253.67 E= 404896.45

Statement of evidence for this corner location is on back of this page.

I hereby certify that this survey, plan, or report was prepared by me or under my direct supervision and that I am a duly Licensed Land Surveyor under the laws of the state of Minnesota.

Signature Debra Blood
 Date May 1, 2013

Typed or Printed Name: Duane A. Bonnema
 Reg. No. 14895

STATEMENT OF EVIDENCE

Northeast Corner Section 13, T114N-R45W

- 1858 W.J. Neely was contracted by the United States Government Land Office to perform the Original Public Land Survey in this township. He records in his field notes, "Set post corner to sec 7, 12, 13 & 18 deposited coal made mound Trench & pits as per instructions."
- June 29, 1899 Jonah Peterman, County Surveyor, records in County Survey Record Book A, page 68; "Stone" at the corner position and dimensions from the corner to the North and corner to the East.
- May 16, 1899 John Norgaard entered into a contract with the Yellow Medicine County Board for the "re-survey of all the section corners except the Township corners" in Yellow Medicine County. "The Monuments are Jasper Granite 2 feet long by 6 inches by 6 inches, all dimensions are given in feet." John Norgaard turned in his survey field notes to the Yellow Medicine County Recorder, who filed them as Doc No. 28417, on September 28, 1901. These field notes became the County Surveyor's Record Book "B", pages 39 & 41.
- 1899 - 1901 John Norgaard, County Surveyor, records in the County Surveyor's Record Book B Page 185, "Located according to testimony of adjoining land owner about fence as were set on the North & South line when the government corner were plain, and at equal proportional distance between the west 1/4 post section 7 and Southwest corner section 18 (T114N-R44W). Set top of monument level with ground.
- 1940 C.E. Lange records in the Yellow Medicine County Surveyor's Record Book, page 549, "found stone monument", he also notes 3 section corner witness ties which he published to the Yellow Medicine County Highway Department (see next entry).
- 1940 The Yellow Medicine County Highway Department Corner tie book, Norman Township page 2 shows that they recorded the 3 C.E. Lange survey witness ties into their Section Corner Tie Book.
- Nov 10, 1966 Yellow Medicine County Highway Department corner tie book, Norman Township page 2, shows they recorded 3 witness ties to the "assumed Corner 11-10-66".
- Nov 8, 2010 Daniel L. Bueltel R.L.S. 43844, Filed a Certificate of Location of Government Corner with the County Recorder, and states, "Bueltel-Moseng Land Surveying found an unrecorded iron at the corner. We tied out the iron, removed it, and dug with a backhoe. We did not find anything else. We held to the found irons position and replaced it with 5/8" iron seal # 43844." 2 section corner witness ties were established.
- August 7, 2012 Duane A. Bonnema, LS 14895, while doing a re-monumentation survey for the Minnesota Department of Transportation, found the monument and witness ties certified by Dan Bueltell in 2011. C.E. Lange had the "stone mon." in 1940, however by 1966 the Yellow Medicine County Highway Department could not find it back. Bonnema did not dig for this corner because Bueltel had already searched with a backhoe. A cast iron capped 2"x30" Telspar Monument was placed at the surface at the position of the found Bueltell 5/8" iron rod.