

Property & Public Services
Property Records Division
Yellow Medicine County, Minnesota
I hereby certify that the within instrument
was filed on May 3, 2013 at 10:50 AM

N/C
BONNEMA SURVEYS INC
PROFESSIONAL LAND SURVEYING
1809 22ND STREET SW, SUITE 104
WILLMAR, MN 56201

Janel Timm, Yellow Medicine County Recorder

By Debra Blood Deputy

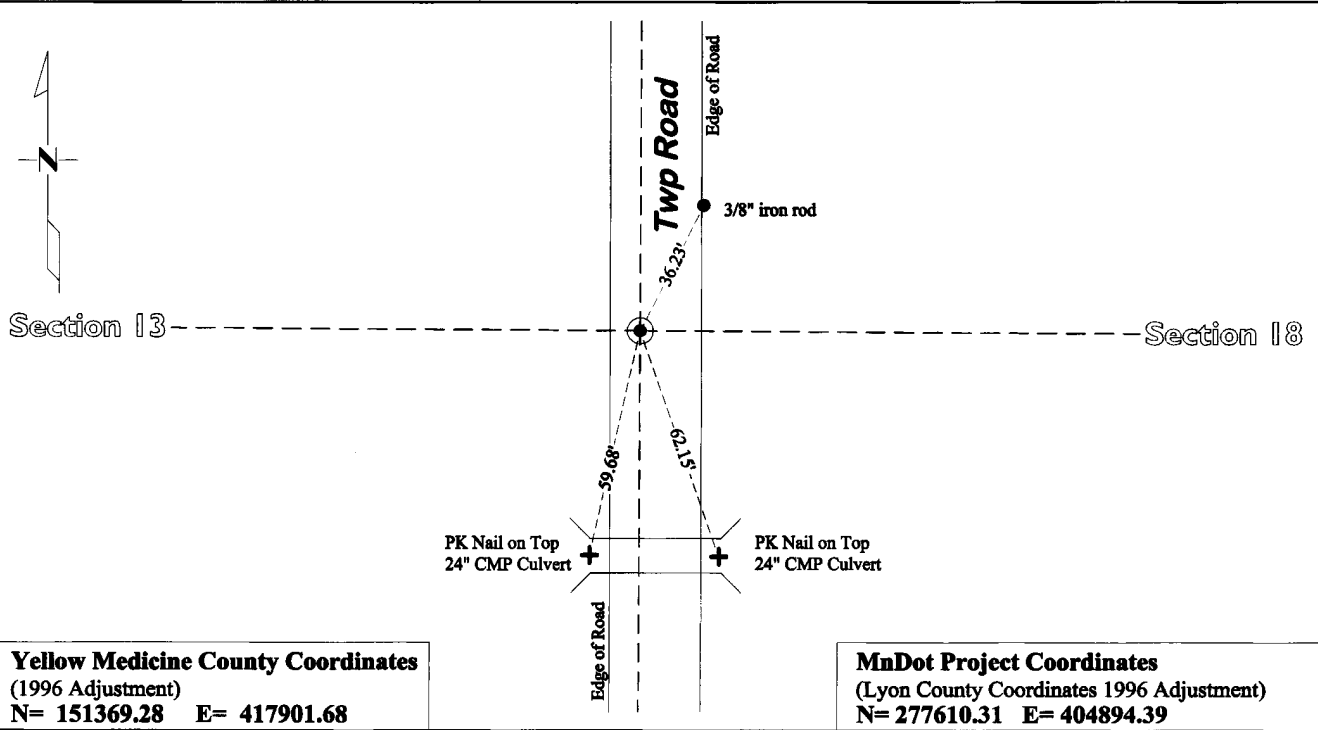
CERTIFICATE OF LOCATION OF GOVERNMENT CORNER

East Quarter Corner of Section 13, Township 114, Range 45

Fifth Principal Meridian, State of Minnesota, County of Yellow Medicine

At the corner location shown on the sketch:

- On July 30, 2012 found a 1 1/4" X 23" Iron Pipe 2' below Road Surface
DATE
- left monument as found lowered monument removed monument (explain)
- On Jan 11, 2013 placed a Cast Iron Capped 2" x 30" Telspar Monument at the location of the Iron Pipe
DATE



Yellow Medicine County Coordinates
(1996 Adjustment)
N= 151369.28 E= 417901.68

MnDot Project Coordinates
(Lyon County Coordinates 1996 Adjustment)
N= 277610.31 E= 404894.39

Statement of evidence for this corner location is on back of this page.

I hereby certify that this survey, plan, or report was prepared by me or under my direct supervision and that I am a duly Licensed Land Surveyor under the laws of the state of Minnesota.

Signature [Signature]
Date May 1, 2013

Typed or Printed Name: Duane A. Bonnema
Reg. No. 14895

STATEMENT OF EVIDENCE

East Quarter Corner Section 13, T114N-45W

- 1858 W.J. Neely was contracted by the United States Government Land Office to perform the Original Public Land Survey in this township. He records in his field notes, "Set cor sec post deposited coal made mound Trench & pits as per instruction".
- May 16, 1899 John Norgaard entered into a contract with the Yellow Medicine County Board for the "re-survey of all the section corners except the Township corners" in Yellow Medicine County. "The Monuments are Jasper Granite 2 feet long by 6 inches by 6 inches, all dimensions are given in feet." John Norgaard turned in his survey field notes to the Yellow Medicine County Recorder, who filed them as Doc No. 28417, on September 28, 1901. These field notes became the County Surveyor's Record Book "B".
- 1899-1901 John Norgaard, County Surveyor, records in the County Survey Record Book B, pages 39 & 41, shows that he measured to the corner during his re-survey of Yellow Medicine County. He shows dimensions of 2645' from the E¹/₄ corner to the NE corner and SE corner of Section 13, which matches the current distances very closely (within 1.5').
- 1940 G.E. Lange records in the Yellow Medicine County Surveyor's Record Book, page 549, shows distances along the east line of section 13 to this corner location but does not mention what type of monument was found or set.
- July 30, 2012 Duane A. Bonnema, LS 14895, while doing a re-monumentation survey for the Minnesota Department of Transportation, dug a 4.3' deep hole that covered an area extending 6.0' north, 3.0' south, 5.0' east, and 2.0' west of this section corner location. The top of the original topsoil was observed to be at a depth of 2.0'. At a depth of 2.0' he found a found a 1 1/4" x 23" iron pipe with two collars at the top. This iron was probably set by Lange in 1940 and his recorded distances are within 2' per mile of our current distances. A cast iron capped 2" square by 30" long iron tarspar monument was placed at the surface at the position of the found 1 1/4" x 23" iron pipe with two collars at the top.