

Property & Public Services
Property Records Division
Yellow Medicine County, Minnesota
I hereby certify that the within instrument
was filed on May 3, 2013 at 10:55 AM

N/C
BONNEMA SURVEYS INC
PROFESSIONAL LAND SURVEYING
1809 22ND STREET SW SUITE 104
WILLMAR MN 56201

Janel Timm, Yellow Medicine County Recorder

By Debrae Blood Deputy

CERTIFICATE OF LOCATION OF GOVERNMENT CORNER

Northeast Corner of Section **22**, Township **114**, Range **45**

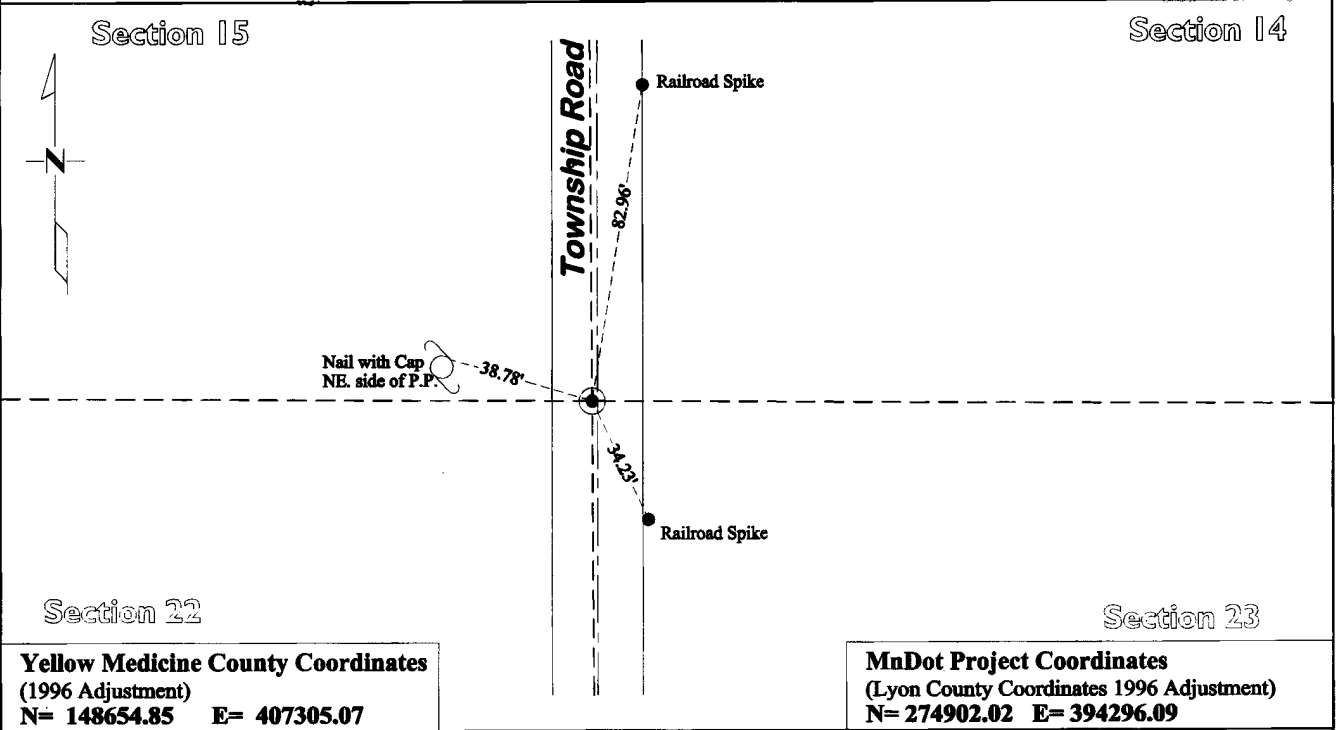
Fifth Principal Meridian, State of Minnesota, County of **Yellow Medicine**

At the corner location shown on the sketch:

On May 23, 2012 found a I.D. cap is Capped Iron Rod at Road Surface illegible
DATE

left monument as found lowered monument removed monument (explain)

On Dec. 12, 2012 placed a Cast Iron Capped 2" x 30" Telspar Monument at the location of the found
DATE capped iron rod



Yellow Medicine County Coordinates
(1996 Adjustment)
N= 148654.85 E= 407305.07

MnDot Project Coordinates
(Lyon County Coordinates 1996 Adjustment)
N= 274902.02 E= 394296.09

Statement of evidence for this corner location is on back of this page.

I hereby certify that this survey, plan, or report was prepared by me or under my direct supervision and that I am a duly Licensed Land Surveyor under the laws of the state of Minnesota.

Signature [Signature]
Date May 1, 2013

Typed or Printed Name: Duane A. Bonnema
Reg. No. 14895

STATEMENT OF EVIDENCE

Northeast Corner Section 22, T114N-R45W

- 1871 L. Harrington was contracted by the United States Government Land Office to perform the Original Public Land Survey in this township. He records in his field notes, "Set a post for the corner to Sections 14, 15, 22 & 23 raised mound as per instructions".
- May 16, 1899 John Norgaard entered into a contract with the Yellow Medicine County Board for the "re-survey of all the section corners except the Township corners" in Yellow Medicine County. "The Monuments are Jasper Granite 2 feet long by 6 inches by 6 inches, all dimensions are given in feet." John Norgaard turned in his survey field notes to the Yellow Medicine County Recorder, who filed them as Doc No. 28417, on September 28, 1901. These field notes became the County Surveyor's Record Book "B".
- 1899 - 1901 John Norgaard, County Surveyor, records in the County Surveyor's Record Book B Page 195, "Located in the center of road running North & South and 33 feet north of fence as were set by Martin Olufsen when the government corner were plain, 33 feet south. Set top of monument level with ground.
- June 7, 1901 John Norgaard, County Surveyor, records in the County Survey Record Book, page 168, "At all Section corners found stone monuments, for location see Book of Re-survey"
- Oct 6, 1909 John Norgaard, County Surveyor, records in the County Surveyor's Record Book, page 204 "found all the Stone Monuments at the Section Corners".
- July 19, 2012 Duane A. Bonnema Land Surveyor #14895, while doing a remonumentation survey for the Minnesota Department of Transportation, found a 1/2" illegible capped iron rod at the road surface. Bonnema did not dig at this location due to the fact that this area was in a cut section of the road and the original topsoil would have been 6' ± above the road surface. The current 1/2 mile distances to the north and east are with 0.2' (amazingly) of the John Norgarrrd 1900 distances (C.S.R.B. B page 41). A cast iron capped 2" square by 30" long iron telspar monument was placed at the surface at the position of the found capped iron rod.