

Property & Public Services  
 Property Records Division  
 Yellow Medicine County, Minnesota  
 I hereby certify that the within instrument  
 was filed on May 3, 2013 at 11:00 AM

Janel Timm, Yellow Medicine County Recorder

By Debra Blood Deputy

N/C  
 BONNEMA SURVEYS INC  
 PROFESSIONAL LAND SURVEYING  
 1809 22ND STREET SW SUITE 104  
 WILLMAR MN 56201

# CERTIFICATE OF LOCATION OF GOVERNMENT CORNER

**Northeast** Corner of Section **23**, Township **114**, Range **45**

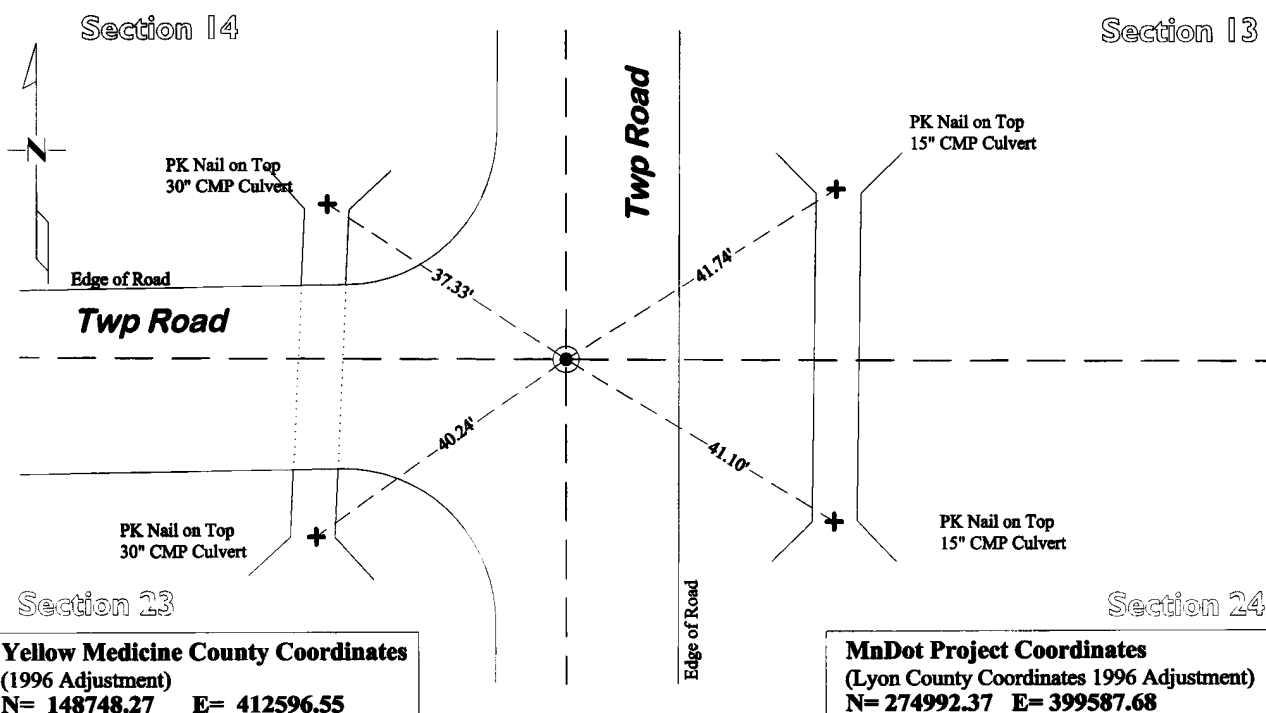
**Fifth** Principal Meridian, State of Minnesota, County of **Yellow Medicine**

At the corner location shown on the sketch:

On May 23, 2012 found a  $\frac{5}{8}$ " Iron rod 0.4' below the surface, 6" and 12" spikes 1.7' below the  
DATE  
 the surface, and a 7 x 7 x 23 inch Jasper Stone with a 3" Carriage bolt and lath alongside

left monument as found  lowered monument  removed monument (explain)

On Aug. 7, 2012 placed a Cast Iron Capped 2" x 30" Telspar Monument at the location of the iron rod,  
DATE  
 the two spikes, and the Jasper Stone



**Yellow Medicine County Coordinates**  
 (1996 Adjustment)  
 N= 148748.27 E= 412596.55

**MnDot Project Coordinates**  
 (Lyon County Coordinates 1996 Adjustment)  
 N= 274992.37 E= 399587.68

Statement of evidence for this corner location is on back of this page.

I hereby certify that this survey, plan, or report was prepared by me or under my direct supervision and that I am a duly Licensed Land Surveyor under the laws of the state of Minnesota.

Signature Debra Blood  
 Date May 1, 2013

Typed or Printed Name: Duane A. Bonnema  
 Reg. No. 14895

# STATEMENT OF EVIDENCE

## Northeast Corner Section 23, T114N-R45W

- 1871 L. Harrington was contracted by the United States Government Land Office to perform the Original Public Land Survey in this township. He records in his field notes, "Set a post for the corner of sections 13, 14, 23, 24 raised mound as per instructions."
- May 16, 1899 John Norgaard entered into a contract with the Yellow Medicine County Board for the "re-survey of all the section corners except the Township corners" in Yellow Medicine County. "The Monuments are Jasper Granite 2 feet long by 6 inches by 6 inches, all dimensions are given in feet." John Norgaard turned in his survey field notes to the Yellow Medicine County Recorder, who filed them as Doc No. 28417, on September 28, 1901. These field notes became the County Surveyor's Record Book "B".
- 1899 - 1901 John Norgaard, County Surveyor, records in the County Survey Record Book B, page 41, that he measured to the corner while doing a re-survey of section corners across the county at the request of the Co. Board.
- 1899 - 1901 John Norgaard, County Surveyor, records in the County Surveyor's Record Book B Page 195, at the NE corner section 23-114-45 "Found the government mound & pits. Set top of monument 2" above ground."
- 1940 C.E. Lange records in the Yellow Medicine County Surveyor's Record Book, page 549, "found stone monument" Lange recorded 2 section corner witness ties which were provided to the Yellow Medicine County Highway Department and recorded in their County Survey Record Book for Norman Township.
- 1940 Yellow Medicine County Highway Department Corner tie book for Norman Township, page 1, shows that they recorded 6 section corner witness ties. 2 of them were evidently furnished by C.E. Lange.
- 1951 Yellow Medicine County Highway Department Corner Tie Book, Norman Township, page 1, records "stone at surface" and 2 section corner witness ties.
- 1951 The MnDOT Alignments & Land Ties Book 2 page 2-6 records "Field stone at surface of RD INT of RDS N & S & W and fence E", and shows a dimension of 1578' to the centerline of the highway.
- 1951 The MnDOT Alignments & Land Ties Book 2 page 2-7 shows the NE corner of section 23, however they did not show a dimension to this corner.
- Feb 1951 The MnDOT Alignments & Land Ties Book 2 page 2-33 records "Found field stone at surf of RD. Placed steel rod on east side of stone."
- June 1952 MnDOT State Project No. 8709-02, Plan sheet no. 7, shows this corner, but does not mention what type of monument was found.
- July 18, 2012 Duane A. Bonnema, Land Surveyor #14895, while doing a re-monumentation survey for the Minnesota Department of Transportation, dug a 3.5' deep hole that covered an area extending 8.0' north, 8.0' south, 4.5' east and 1.5' west, of this section corner location. At a depth of 2.5 feet the top of the original topsoil was located. At a depth of 1.7' an old roadbed was located and a 6" and a 12" spike were found. At a depth of 3.5' a 7"x7"x23" quarried granite jasper stone was found with a carriage bolt and a lath alongside of the stone. The 7" x 7" Jasper Granite was set by John Norgaard at the location of the 1871 government mound and pits. A 2" square by 30" long iron telspar monument was placed at the position of the found iron rod, two spikes, and the 7"x7"x23" quarried granite jasper stone. Our current dimension is 1571.6' compared to the 1951 MnDOT measurement of 1578'.