

N/C  
 BONNEMA SURVEYS INC  
 PROFESSIONAL LAND SURVEYING  
 1809 22ND STREET SW SUITE 104  
 WILLMAR MN 56201

Janel Timm, Yellow Medicine County Recorder  
 By Debra Blood Deputy

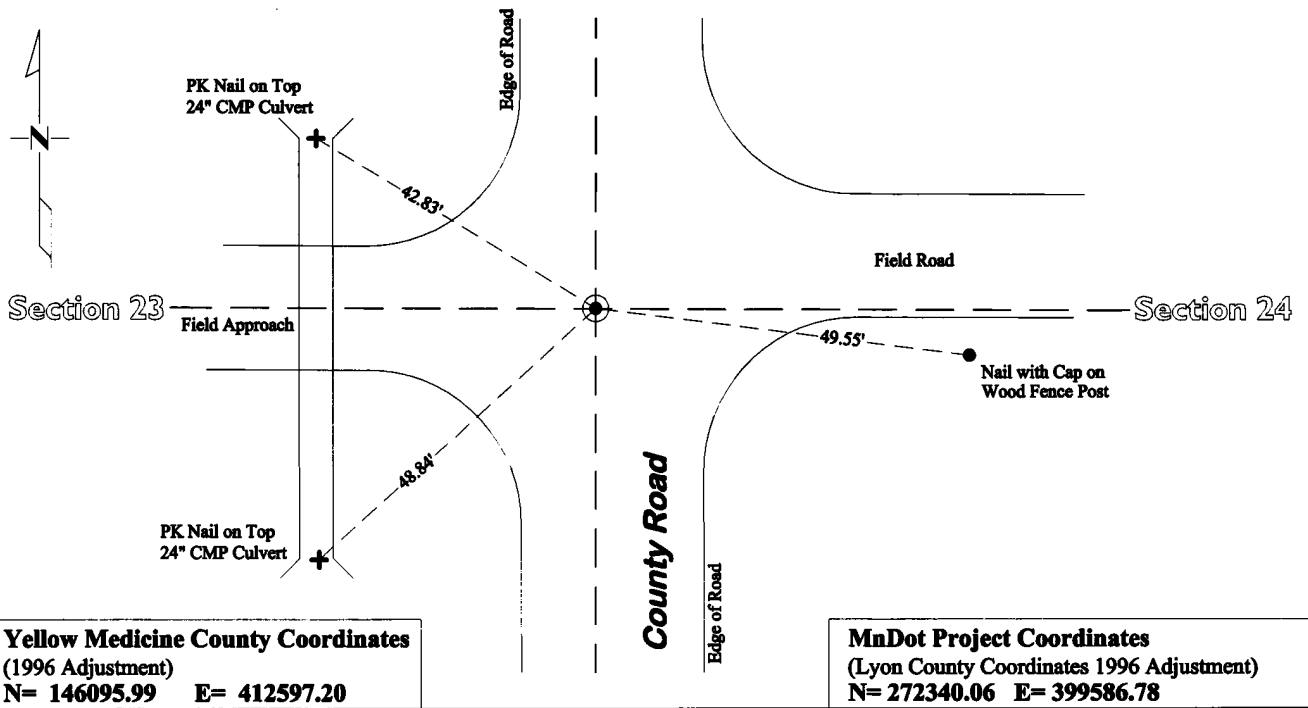
## CERTIFICATE OF LOCATION OF GOVERNMENT CORNER

**East Quarter** Corner of Section **23**, Township **114**, Range **45**

**Fifth** Principal Meridian, State of Minnesota, County of **Yellow Medicine**

At the corner location shown on the sketch:

- On July 18, 2012 found a Capped Iron Rod 0.4' Below Road Surface RLS 19092 (Marihart)  
DATE
- left monument as found       lowered monument       removed monument (explain)
- On Dec. 12, 2012 placed a Cast Iron Capped 2" x 30" Telspar Monument at the location of the found  
DATE  
capped iron rod (Marihart)



Statement of evidence for this corner location is on back of this page.

I hereby certify that this survey, plan, or report was prepared by me or under my direct supervision and that I am a duly Licensed Land Surveyor under the laws of the state of Minnesota.

Signature *[Signature]*  
 Date May 1, 2013

Typed or Printed Name: Duane A. Bonnema  
 Reg. No. 14895

# **STATEMENT OF EVIDENCE**

---

## **East Quarter Corner Section 23, T114N-R45W**

- 1871 L. Harrington was contracted by the United States Government Land Office to perform the Original Public Land Survey in this township. He records in his field notes, "Set a post for ¼ sec cor raised mound as per instructions."
- May 16, 1899 John Norgaard entered into a contract with the Yellow Medicine County Board for the "re-survey of all the section corners except the Township corners" in Yellow Medicine County. "The Monuments are Jasper Granite 2 feet long by 6 inches by 6 inches; all dimensions are given in feet." John Norgaard turned in his survey field notes to the Yellow Medicine County Recorder, who filed them as Doc No. 28417, on September 28, 1901. These field notes became the County Surveyor's Record Book "B".
- 1899-1901 John Norgaard, County Surveyor, records in the County Survey Record Book B, page 23 & 41, that he measured to this corner position however he does not state what type of monument was at this corner.
- July 18, 2012 Duane A. Bonnema, L.S. 14895, while doing a re-monumentation survey for the Minnesota Department of Transportation, found a capped iron rod at the surface and dug a hole 5.5' deep which covered an area extending 3.0' north, 5.5' south, 1.5' east, and 1.5' west, of this section corner position. The top of the original topsoil was located at a depth of 3' below the surface. At a depth of 3' roots and grass were found. No evidence of section corner monumentation was found. Evidently prior road construction destroyed the evidence of section corner monumentation. The 1900 era Norgarrd distance for the ½ mile and to the south agrees with current measurements; however the norgarrd distance for the ½ mile to the north is 5 feet shorter than current measurements, which is unusual as we are typically with a couple feet of the Norgarrd distance. A cast iron capped 2" square by 30" long iron telspar monument was placed at the surface at the position of the found capped iron rod.