

Property & Public Services  
Property Records Division  
Yellow Medicine County, Minnesota  
I hereby certify that the within instrument  
was filed on May 3, 2013 at 11:10 AM

N/C  
BONNEMA SURVEYS INC  
PROFESSIONAL LAND SURVEYING  
1809 22ND STREET SW SUITE 104  
WILLMAR MN 56201

Janel Timm, Yellow Medicine County Recorder

By Debra Blood Deputy

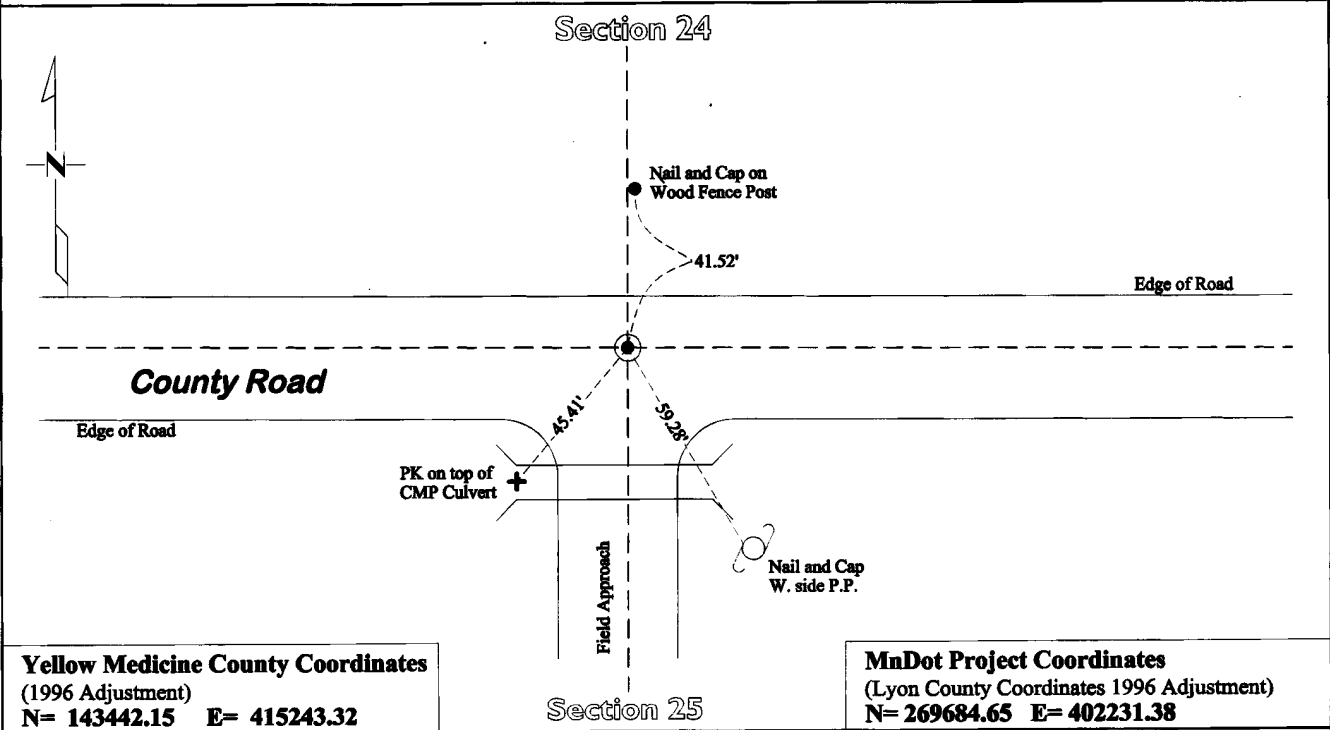
### CERTIFICATE OF LOCATION OF GOVERNMENT CORNER

**North Quarter** Corner of Section **25**, Township **114**, Range **45**

**Fifth** Principal Meridian, State of Minnesota, County of **Yellow Medicine**

At the corner location shown on the sketch:

- On July 30, 2012 found No evidence of section corner monumentation  
DATE
- left monument as found
- lowered monument
- removed monument (explain)
- On Jan 11, 2013 placed a Cast Iron Capped 2" x 30" Telspar Monument on straight line proration (split)  
DATE



**Yellow Medicine County Coordinates**  
(1996 Adjustment)  
N= 143442.15 E= 415243.32

**MnDot Project Coordinates**  
(Lyon County Coordinates 1996 Adjustment)  
N= 269684.65 E= 402231.38

Statement of evidence for this corner location is on back of this page.

I hereby certify that this survey, plan, or report was prepared by me or under my direct supervision and that I am a duly Licensed Land Surveyor under the laws of the state of Minnesota.

Signature [Signature]  
Date May 1, 2013

Typed or Printed Name: Duane A. Bonnema  
Reg. No. 14895

# STATEMENT OF EVIDENCE

---

## Quarter North/Corner Section 25, T114N-R45W

- 1871 L. Harrington was contracted by the United States Government Land Office to perform the Original Public Land Survey in this township. He records in his field notes, "Set post for ¼ sec cor raised mound as per instructions."
- May 16, 1899 John Norgaard entered into a contract with the Yellow Medicine County Board for the "re-survey of all the section corners except the Township corners" in Yellow Medicine County. "The Monuments are Jasper Granite 2 feet long by 6 inches by 6 inches, all dimensions are given in feet." John Norgaard turned in his survey field notes to the Yellow Medicine County Recorder, who filed them as Doc No. 28417, on September 28, 1901. These field notes became the County Surveyor's Record Book "B".
- 1899-1901 John Norgaard, County Surveyor, records in the County Survey Record Book B, page 41, shows that he measured to the corner while doing a re-survey of section corners across the county at the request of the Co. Board.
- July 30, 2012 Duane A. Bonnema, L.S. 14895, while doing a re-monumentation survey for the Minnesota Department of Transportation dug a 2.5' deep hole which covered an area extending 3.0' north, 3.0' south, 6.0' east, and 9.0' west, of this section corner location. The original topsoil was evidently destroyed in the road construction process. No evidence of section corner monumentation was found. A cast iron capped 2" square by 30" long iron telspar monument was placed at the surface at the position noted by John Norgaard in this 1900 survey. The half mile distances to the east and west are within 3' of 1900 Norgarrd dimension.