

Doc# 257615 Fee: \$0.00 2 Pages

Property & Public Services  
Property Records Division  
Yellow Medicine County, Minnesota  
I hereby certify that the within instrument  
was filed on May 3, 2013 at 11:15 AM

Janel Timm, Yellow Medicine County Recorder

By Delva Blood Deputy

N/C  
BONNEMA SURVEYS INC  
PROFESSIONAL LAND SURVEYING  
1809 22ND STREET SW SUITE 104  
WILLMAR MN 56201

# CERTIFICATE OF LOCATION OF GOVERNMENT CORNER

Northeast Corner of Section 26, Township 114, Range 45

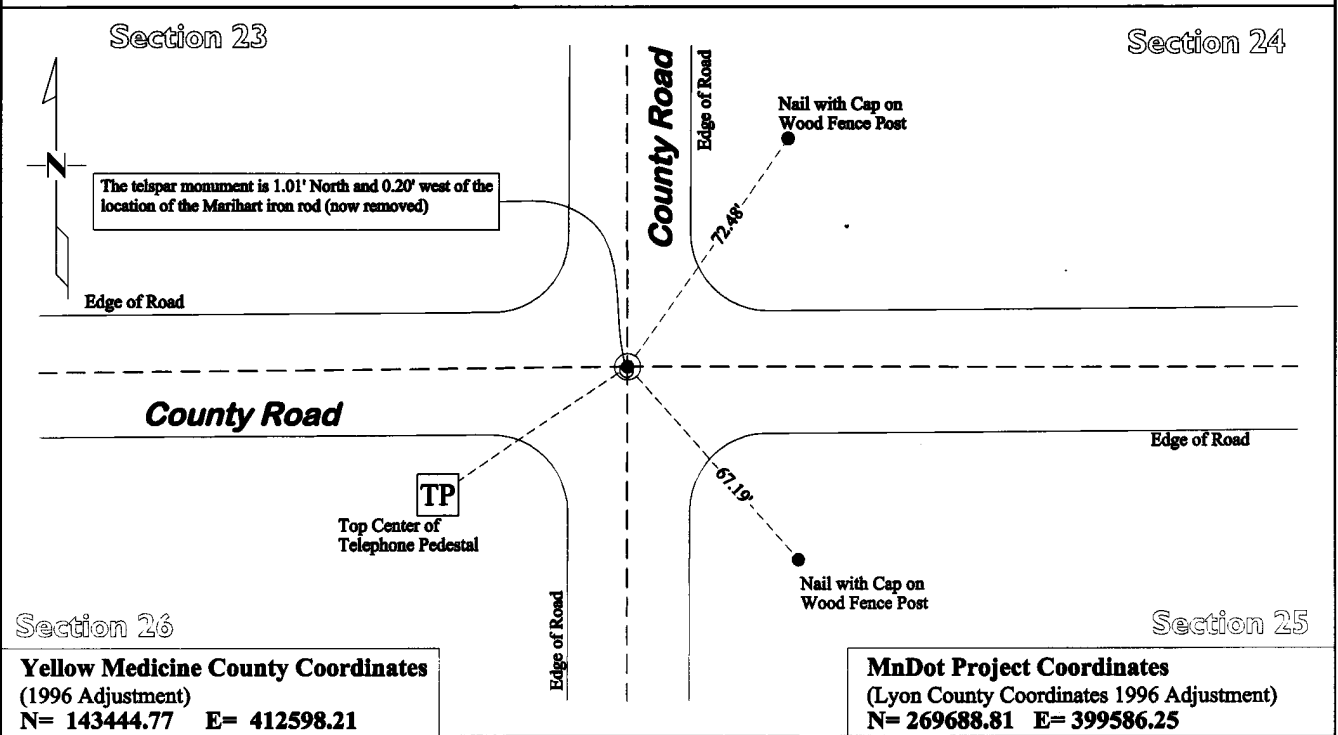
Fifth Principal Meridian, State of Minnesota, County of Yellow Medicine

At the corner location shown on the sketch:

On May 16, 2012 found a Capped Iron Rod 0.3' Below Road Surface RLS# 19092 (Marihart) and a  
DATE  
6 x 7 x 25 inch jasper stone 2.5' below the surface with remnants of charred oak stake alongside

left monument as found  lowered monument  removed monument (explain)

On Aug. 7, 2012 placed a Cast Iron Capped 2" x 30" Telspar Monument at the location of the Jasper  
DATE  
Stone, 0.2' East & 1.0' North of capped iron rod



Statement of evidence for this corner location is on back of this page.

I hereby certify that this survey, plan, or report was prepared by me or under my direct supervision and that I am a duly Licensed Land Surveyor under the laws of the state of Minnesota.

Signature [Signature]  
Date May 1, 2013

Typed or Printed Name: Duane A. Bonnema  
Reg. No. 14895

# STATEMENT OF EVIDENCE

---

## Northeast Corner Section 26, T114N-R45W

- 1871 L. Harrington was contracted by the United States Government Land Office to perform the Original Public Land Survey in this township. He records in his field notes, "Set a post for the corner to sections 23, 24, 25 & 26 raised mound as per instructions."
- May 16, 1899 John Norgaard entered into a contract with the Yellow Medicine County Board for the "re-survey of all the section corners except the Township corners" in Yellow Medicine County. "The Monuments are Jasper Granite 2 feet long by 6 inches by 6 inches, all dimensions are given in feet." John Norgaard turned in his survey field notes to the Yellow Medicine County Recorder, who filed them as Doc No. 28417, on September 28, 1901. These field notes became the County Surveyor's Record Book "B".
- 1899 - 1901 John Norgaard, County Surveyor records in the County Survey Record Book B, page 41, that he measured to the corner while doing a re-survey of section corners across Norman Township at the request of the County Board.
- 1899 - 1901 John Norgaard, County Surveyor records in the County Surveyor's Record Book B Page 196, "Found the government mound. Set top of monument 3" above ground."
- Oct 27, 1959 The Yellow Medicine County Highway Department Corner Tie Book, Norman Twp notes "Gr. Mon 2' deep (10-27-59)"
- July 17, 2013 Duane A. Bonnema, L.S. 14895, while doing a re-monumentation survey for the Minnesota Department of Transportation, found a Manhart iron rod at the surface. A 3.5' deep hole was dug which covered an area extending 2.5' north, 9' south, 4' east, and 1' west, of the found iron rod. The original topsoil was located 3' below the surface. At a depth of 3' a 6"x7"x25" quarried red granite jasper stone was found with remnants of charred oak stake alongside it. The 6"x7" quarried red granite jasper stone was found at a location 1.01' north and 0.20' east of the Manhart iron rod at the surface. The half mile dimension to the north is on the Norgaard distance recorded in 1900. The half mile dimension to the east is within 3' of the Norgaard distance. A cast iron capped 2" square by 30" long iron tel spar monument was placed at the surface at the position of the found 6"x7"x25" quarried red granite jasper stone.