

Property & Public Services  
Property Records Division  
Yellow Medicine County, Minnesota  
I hereby certify that the within instrument  
was filed on May 3, 2013 at 11:20 AM

N/C  
BONNEMA SURVEYS INC  
PROFESSIONAL LAND SURVEYING  
1809 22ND STREET SW SUITE 104  
WILLMAR MN 56201

Janel Timm, Yellow Medicine County Recorder

By Debra Blood Deputy

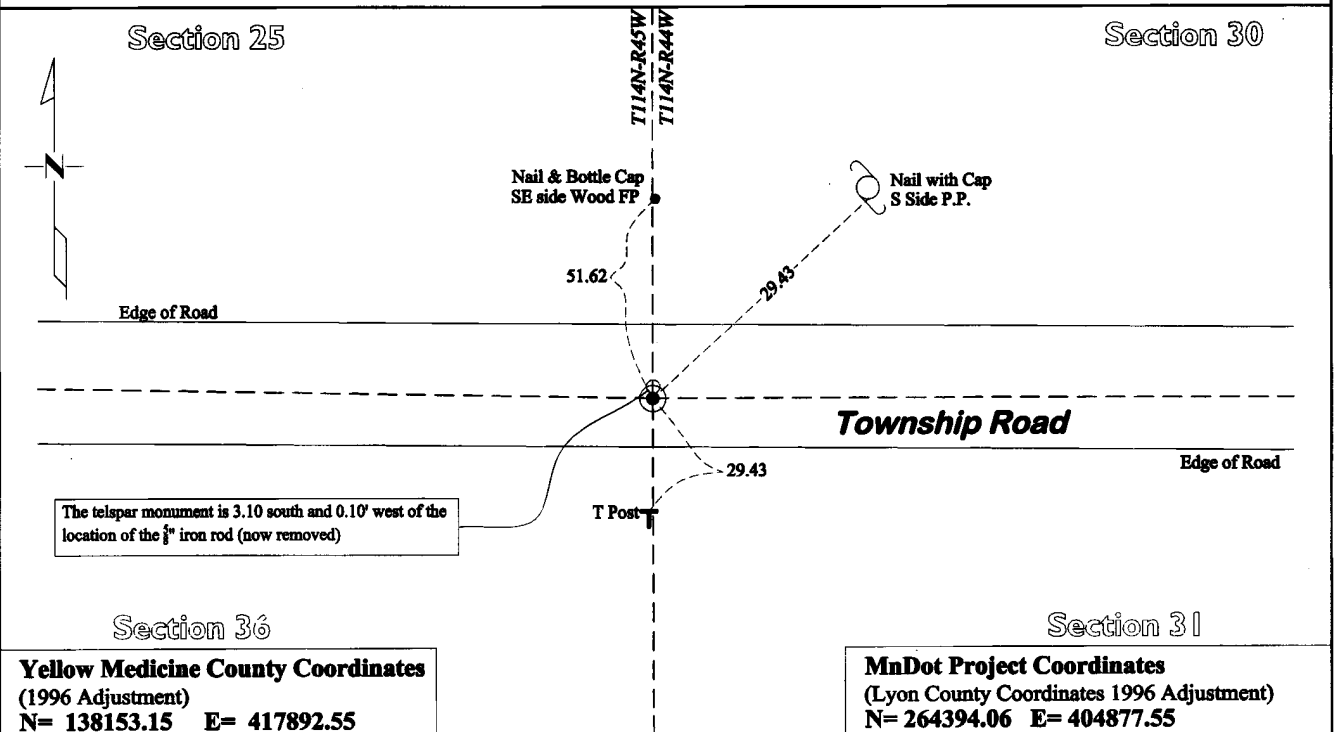
### CERTIFICATE OF LOCATION OF GOVERNMENT CORNER

Northeast Corner of Section 36, Township 114, Range 45

Fifth Principal Meridian, State of Minnesota, County of Yellow Medicine

At the corner location shown on the sketch:

- On May 16, 2012 found a 5/8" Iron Rod 0.2' Below Road Surface, 7 x 11 x 12 inch field stone 0.2'  
DATE below road surface, and a 5 x 7 x 24 inch Jasper stone with small traces of wood alongside 1.0' below surface
- left monument as found       lowered monument       removed monument (explain)
- On Aug. 7, 2012 placed a Cast Iron Capped 2" x 30" Telspar Monument at the location of the field stone  
DATE and jasper stone



**Yellow Medicine County Coordinates**  
(1996 Adjustment)  
N= 138153.15 E= 417892.55

**MnDot Project Coordinates**  
(Lyon County Coordinates 1996 Adjustment)  
N= 264394.06 E= 404877.55

Statement of evidence for this corner location is on back of this page.

I hereby certify that this survey, plan, or report was prepared by me or under my direct supervision and that I am a duly Licensed Land Surveyor under the laws of the state of Minnesota.

Signature [Signature]  
Date May 1, 2013

Typed or Printed Name: Duane A. Bonnema  
Reg. No. 14895

# **STATEMENT OF EVIDENCE**

---

## **Northeast Corner Section 36, T114N-R45W**

- 1858 W.J. Neely was contracted by the United States Government Land Office to perform the Original Public Land Survey in this township. He records in his field notes, "Set post corner to sect 25, 20, 31 & 36 deposited coal made mound Trench & pits as per instruction".
- May 16, 1899 John Norgaard entered into a contract with the Yellow Medicine County Board for the "re-survey of all the section corners except the Township corners" in Yellow Medicine County. "The Monuments are Jasper Granite 2 feet long by 6 inches by 6 inches, all dimensions are given in feet." John Norgaard turned in his survey field notes to the Yellow Medicine County Recorder, who filed them as Doc No. 28417, on September 28, 1901. These field notes became the County Surveyor's Record Book "B".
- 1899 - 1901 John Norgaard, County Surveyor records in the County Survey Record Book B, pages 39 and 41, shows that he measured to the corner while doing a re-survey of section corners across Norman and Wergeland Townships at the request of the County Board.
- 1899 - 1901 John Norgaard, County Surveyor records in the County Surveyor's Record Book B Page 185, "Found the government mound & pits. Set top of monument 4" above ground."
- 1946 The Yellow Medicine County Highway Department Corner Field Tie Book records "15" deep Stone", they also recorded 4 section corner witness ties to 4 fence posts.
- Jan - March, 2006 Gary L. Kratz, Regional Land Surveyor for the United States Fish and Wildlife Services, prepared two surveys for the "NORTHERN TALLGRASS PRAIRE NATIONAL WILDLIFE REFUGE" and on these surveys he shows an iron rod at the NE corner of section 36. Kratz also recorded in his field notes "found a 5/8" Iron Rod down 2" in E-W graded gravel road, on fences N#5." He prepared a section breakdown sheet and recorded 1 section corner witness tie.
- July 17, 2012 Duane A. Bonnema, L.S. 14895, while doing a re-monumentation survey for the Minnesota Department of Transportation, found a 5/8" iron rod at the road surface. He dug a hole 3.5' deep which covered an area extending 6.0' north, 1.5' south, 4.5' east, and 7.5' west, of this section corner location. The top of the original top soil was located at a depth of 1.0' feet. At a depth of 2" a 12"x11"x7" field stone was found. At a depth of 11" a 5"x7"x24" quarried red jasper stone was found with remnants of wood alongside the stone. The mile dimensions to the north is on the Norgaard distance recorded 112 years ago. The 5"x7"x24" quarried red jasper stone was found 3.10' south and 0.10' east of the found 3/8" iron rod. A cast iron capped 2" square by 30" long iron telspar monument was placed at the surface at the position of the found 5"x7"x24" quarried red jasper stone.