

Property & Public Services
Property Records Division
Yellow Medicine County, Minnesota
I hereby certify that the within instrument
was filed on May 7, 2013 at 10:00 AM

Janel Timm, Yellow Medicine County Recorder

By Debra Bluff Deputy

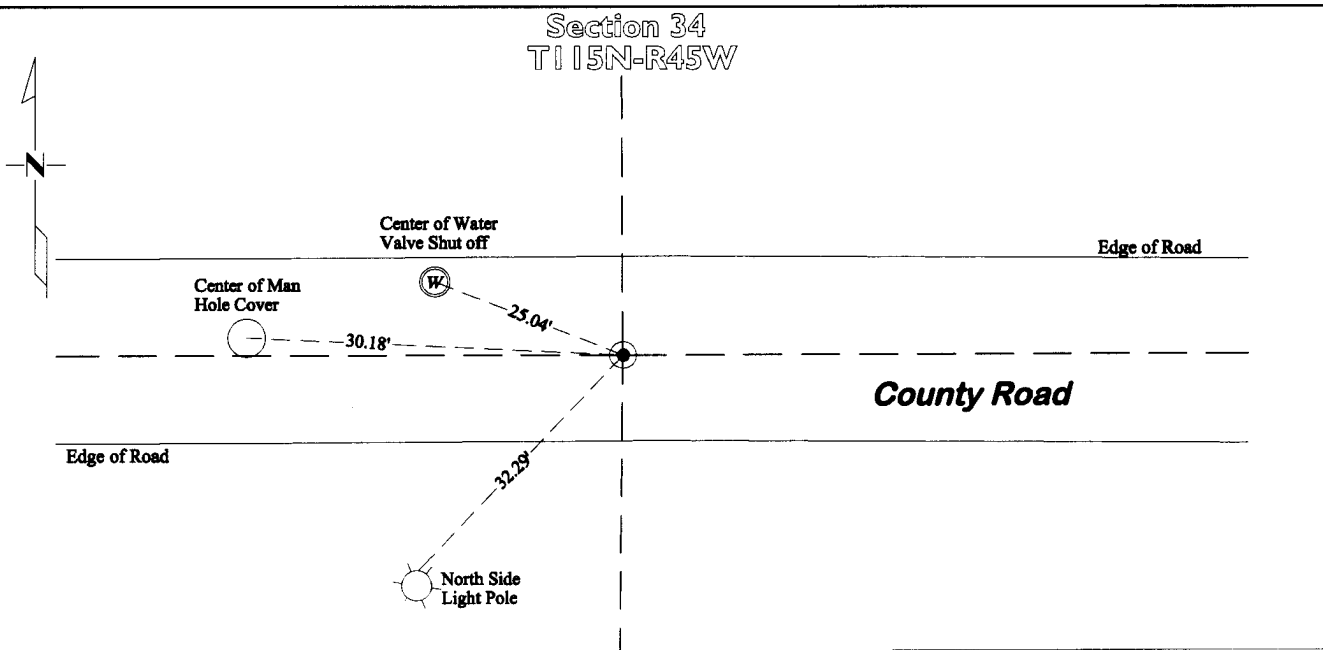
N/C
BONNEMA SURVEYS INC
PROFESSIONAL LAND SURVEYING
1809 22ND STREET SW SUITE 104
WILLMAR MN 56201

CERTIFICATE OF LOCATION OF GOVERNMENT CORNER

North Quarter Corner of Section 3, Township 114, Range 45
Fifth Principal Meridian, State of Minnesota, County of Yellow Medicine

At the corner location shown on the sketch:

- On May 23, 2012 found Nothing
- left monument as found lowered monument removed monument (explain)
- On April 3, 2013 placed a Cast Iron Capped 2" x 30" Telspar Monument at the position determined by Pellinen in 1973 and used by Bueltel in 2010



Yellow Medicine County Coordinates
(1996 Adjustment)
N= 164562.58 E= 404668.18

Section 3
T114N-R45W

MnDot Project Coordinates
(Lyon County Coordinates 1996 Adjustment)
N= 290811.49 E= 391668.39

Statement of evidence for this corner location is on back of this page.

I hereby certify that this survey, plan, or report was prepared by me or under my direct supervision and that I am a duly Licensed Land Surveyor under the laws of the state of Minnesota.

Signature Matthew D. Runke
Date 5/3/13

Typed or Printed Name: Matthew D. Runke
Reg. No. 46171

STATEMENT OF EVIDENCE

North Quarter Corner Section 3, T114N-R45W

- 1858 W.J. Neely was contracted by the United States Government Land Office to perform the Original Public Land Survey in this township. He records in his field notes, "Set qr sec post deposited a coal made mound Trench & pits as per instructions."
- 1900 J.C.W Kline, surveyor, prepared the record plat entitled, "FOURTH RAILROAD ADDITION TO THE TOWN OF CANBY" on file in the office of the Yellow Medicine County Recorder. Kline shows this corner position but does not state what type of monument was found.
- 1902 W. H. Hill, surveyor, prepared the record plat entitled, "FIFTH RAILROAD ADDITION TO THE TOWN OF CANBY" on file in the office of the Yellow Medicine County Recorder. Hill shows this corner position but does not state what type of monument was found.
- 1914 F. R. Kline, surveyor, prepared the record plat entitled, "EIGHTH RAILROAD ADDITION TO THE TOWN OF CANBY" on file in the office of the Yellow Medicine County Recorder. Kline shows a "stone" at this corner position.
- 1915 John Norgaard, County Surveyor, records in County Surveyor's Record Book page 354, "located online and equal distance between Section Corners."
- 1920 F. R. Kline, Surveyor, prepared the record plat entitled, "OUTLOTS H TO V INCLUSIVE TO THE TOWN OF CANBY" on file in the office of the Yellow Medicine County Recorder. Kline shows a "stone" at the corner position.
- Oct 24, 1973 Willard Pellinen, LS 9626, prepared a Certificate of Location of Government Corner and states "Set on proration of plat distances to SW and SE corners of Sec. 34."
- Nov 18, 2010 Daniel L Bueltel, LS 43844, while doing work on Bueltel-Moseng Land Surveying project No. 10-4071, notes that he found a "1/2" pipe at this corner position and dimensions along the north line of this section.
- May 23, 2012 Matthew D. Runke, LS 46171, while doing a re-monumentation survey for the Minnesota Department of Transportation found no existing monumentation at this corner position. It appears that this street was recently overlaid or repaved which is likely what removed the 1/2" iron pipe set by Pellinen in 1973 and used by Bueltel in 2010. No excavation was performed at this corner location due to the close proximity of a city sewer line. The installation of this pipe would have destroyed any evidence of this corner position. Pellinen positioned this corner "on proration of plat distances to SW and SE corners of section 34" which fits well with land use to the north and the centerline of the road. It also fits well with two 1" iron pipes found along the East line of the OUTLOTS H TO V INCLUSIVE TO THE TOWN OF CANBY plat filed in 1920. The position set by Pellinen and used by Bueltel appears to be the best evidence of the location of this section corner. A Cast Iron capped 2"x30" Telspar Monument was placed at the location of the 1/2" pipe used by Pellinen and Bueltel.