

Doc# 257652 Fee: \$0.00 2 Pages
Property & Public Services
Property Records Division
Yellow Medicine County, Minnesota
I hereby certify that the within instrument
was filed on May 7, 2013 at 10:05 AM

Janel Timm, Yellow Medicine County Recorder

By Debra Blood Deputy

N/C
BONNEMA SURVEYS INC
PROFESSIONAL LAND SURVEYING
1809 22ND STREET SW SUITE 104
WILLMAR MN 56201

CERTIFICATE OF LOCATION OF GOVERNMENT CORNER

East Quarter Corner of Section **4**, Township **114**, Range **45**

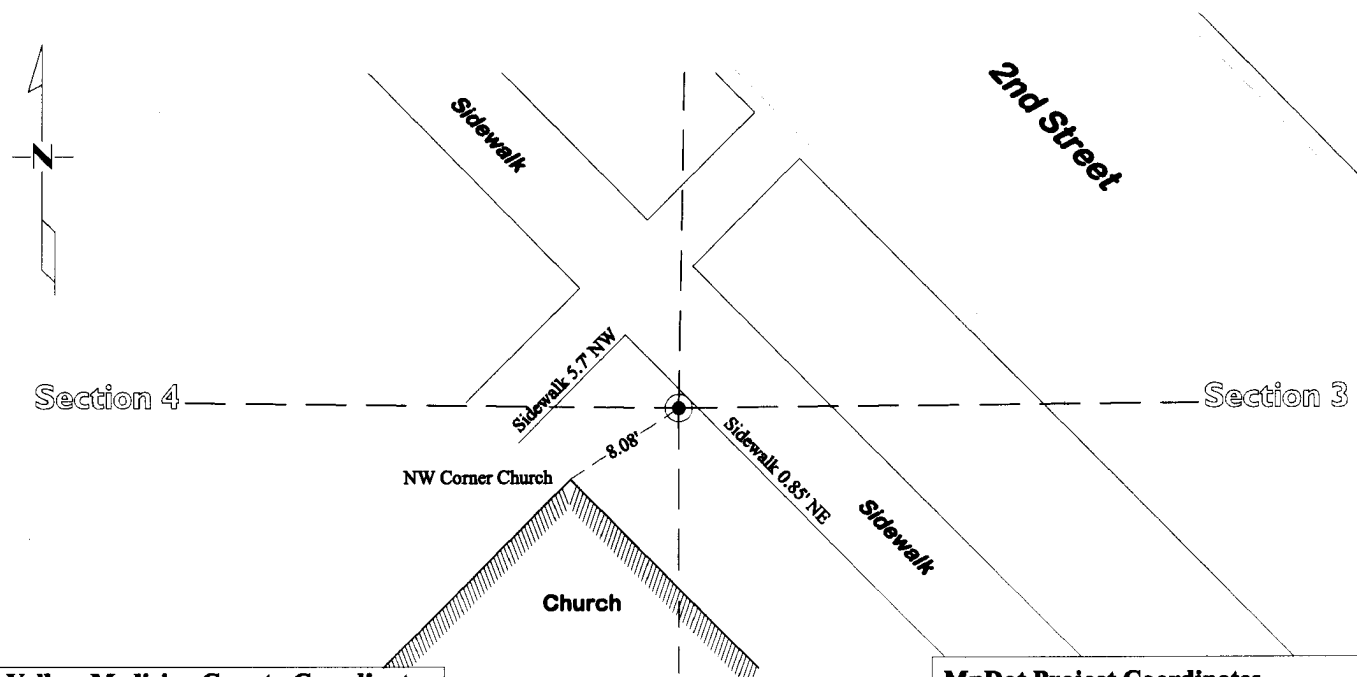
Fifth Principal Meridian, State of Minnesota, County of **Yellow Medicine**

At the corner location shown on the sketch:

On Feb 6, 2013 found a 1" capped iron pipe (RLS 43844)
DATE

left monument as found lowered monument removed monument (explain)

On April 3, 2013 placed a Cast iron capped 2" x 30" Telspar monument at the location of Bueltel's
DATE
1" Capped Iron Pipe



Yellow Medicine County Coordinates
1996 Adjustment
N= 161841.10 E= 401982.56

MnDot Project Coordinates
(Lyon County Coordinates) 1996 Adjustment
N= 288091.53 E= 388981.15

Statement of evidence for this corner location is on back of this page.

I hereby certify that this survey, plan, or report was prepared by me or under my direct supervision and that I am a duly Licensed Land Surveyor under the laws of the state of Minnesota.

Signature Matthew Runke
Date 5/3/13

Typed or Printed Name: Matthew D. Runke
Reg. No. 46171

STATEMENT OF EVIDENCE

East Quarter Corner Section 4, T114N-R45W

- 1871 L. Harrington was contracted by the United States Government Land Office to perform the Original Public Land Survey in this township. He records in his field notes, "Set a post for the corner to 1/4 sections raised mound as per instructions".
- Aug 24, 1876 Arthur Jacobi, Land Surveyor, prepared the record plat entitled CANBY on file in the office of the Yellow Medicine County Recorder. Jacobi notes "1/4 S" at this corner position.
- Dec. 18, 1897 A.M. Haynes, Land Surveyor, prepared the record plat entitled, "SWENSONS FOURTH ADDITION TO CANBY" on file in the office of the Yellow Medicine County Recorder. Haynes shows a "stone" at this corner position.
- Oct. 19, 1900 J.C.W Kline, Land Surveyor, prepared the record plat entitled, "FOURTH RAILROAD ADDITION TO THE TOWN OF CANBY" on file in the office of the Yellow Medicine County Recorder. Kline notes "1/4 Cor." but does not state what type of monument was found.
- June 15, 2010 Daniel L. Buelte, LS 43844, prepared a Certificate of Location of Government Corner and states "found a flat bar at the corner. It fit with other existing evidence and distances recorded on the Original Plat of the City of Canby, Minnesota. We replaced the iron with a 1" pipe with seal # 43844 at the corner." He also recorded a Yellow Medicine county coordinate value for this corner position.
- Nov 18, 2010 Daniel L. Buelte LS 43844, while doing work on Buelte-Moseng Land Surveying Project No. 10-4071, notes he set "1" pipe w/ seal 43844" and dimensions to this corner position.
- May 5, 2012 Matthew D. Runke, LS 46171, while doing a re-monumentation survey for the Minnesota Department of Transportation found a 1" capped iron pipe (RLS 43844) at the corner position. No excavation was done at this corner position due to the proximity of the church building and sidewalks, and any evidence of the Original Public Land Survey corner would have been destroyed in construction. Buelte found a flat bar at this corner location that fit with existing evidence and distances recorded on the Original Plat of the city of Canby "and replaced the flat bar with a 1" pipe with seal # 43844". The 1" Capped Iron Pipe appears to be the best evidence of the location of this Section Corner. The plat dimensions, section corner witness ties and coordinate value were verified and a Cast Iron Capped 2" x 30" Telspar Monument was placed at the location of the 1" Capped Iron Pipe.