

Property & Public Services  
Property Records Division  
Yellow Medicine County, Minnesota  
I hereby certify that the within instrument  
was filed on May 7, 2013 at 10:20 AM

Janel Timm, Yellow Medicine County Recorder

By Debra Blood Deputy

N/C  
BONNEMA SURVEYS INC  
PROFESSIONAL LAND SURVEYING  
1809 22ND STREET SW SUITE 104  
WILLMAR MN 56201

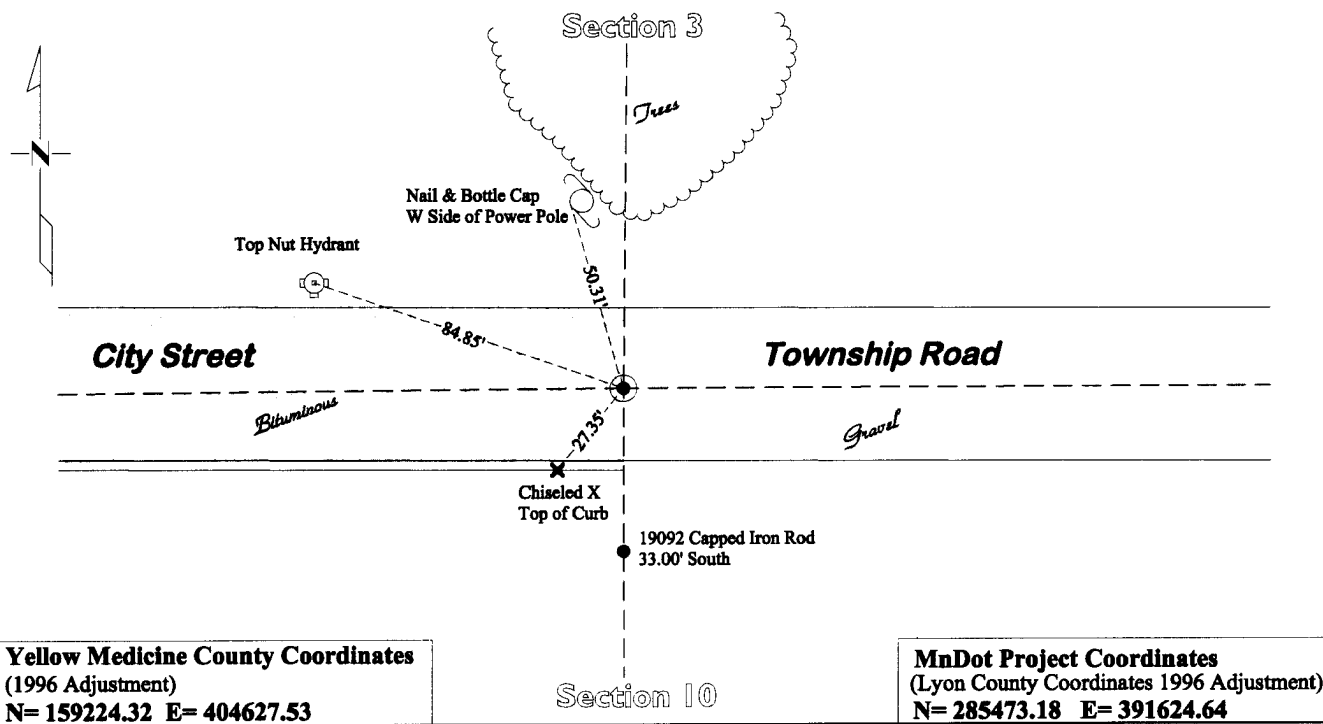
### CERTIFICATE OF LOCATION OF GOVERNMENT CORNER

**North Quarter** Corner of Section **10**, Township **114**, Range **45**

**Fifth** Principal Meridian, State of Minnesota, County of **Yellow Medicine**

At the corner location shown on the sketch:

- On May 23, 2012 found a 3/8" iron rod  
DATE
- left monument as found       lowered monument       removed monument (explain)
- On March 1, 2013 placed a Cast iron capped 2" x 30" iron telspar monument at the location of the 3/8"  
DATE iron rod



**Yellow Medicine County Coordinates**  
(1996 Adjustment)  
N= 159224.32 E= 404627.53

**MnDot Project Coordinates**  
(Lyon County Coordinates 1996 Adjustment)  
N= 285473.18 E= 391624.64

Statement of evidence for this corner location is on back of this page.

I hereby certify that this survey, plan, or report was prepared by me or under my direct supervision and that I am a duly Licensed Land Surveyor under the laws of the state of Minnesota.

Signature Matthew D. Runke  
Date 5/3/13

Typed or Printed Name: Matthew D. Runke  
Reg. No. 46171

# STATEMENT OF EVIDENCE

## North Quarter Corner Section 10, T114N-R45W

- 1871 L. Harrington was contracted by the United States Government Land Office to perform the Original Public Land Survey in this township. He records in his field notes, "Set a post for 1/4 sec cor raised mound as per instructions".
- Nov 6, 1891 Jonah Peterman, County Surveyor, records in County Surveyor's Record Book, pg 52, "I found all of the quarter posts in and to said Section 10", and notes "Stone in Road" at this section corner position. He also notes he "set stone" at the center of this section.
- Jan 1905 F.R. Kline, Land Surveyor, prepared the record plat entitled, "SIXTH RAILROAD ADDITION & SUBDIVISION OF PART OF BLOCK 17 OF SECOND RAILROAD ADDITION TO THE TOWN OF CANBY" on file in the office of the Yellow Medicine County Recorder. Kline shows the 1/4 corner position but does not state what type of monument he found.
- 1918 I.M. Youngdale, records in County Surveyor's Record Book, pg 398 "N/4 post - Not Found" and dimensions along the north line of this section.
- Dec 1920 F.R. Kline, Land Surveyor, prepared the record plat entitled, "OUTLOTS H TO V INCLUSIVE TO THE TOWN OF CANBY" on file in the office of the Yellow Medicine County Recorder. Kline shows an "Iron" at the 1/4 corner position.
- August 1926 John Norgaard, County Surveyor, records in County Surveyor's Record Book, page 505, "Found Iron Monument set by me in 1902."
- 1951 MnDOT SP 8709 & 4106, TH 68, Alignment & Land Ties Field Book 2, Pg 2-1 notes, "1/4 corner assumed to be at INT of RD E&W & fence N&S," and dimensions along the north line of this section.
- 1951 Arbie Nelson, Land Surveyor, prepared the record plat entitled SNORTUM'S SUBDIVISION on file in the office of the Yellow Medicine County Recorder. Nelson notes "1/4 cor sections 3-10" but does not mention what type of monument was found at this corner location.
- Oct 1964 Arbie Nelson, Land Surveyor, prepared the record plat entitled TEIGLANDS SUB-DIVISION on file at the office of the Yellow Medicine County Recorder. Nelson notes a "steel stake monument" at this corner location.
- 1982 Lyle Moseng, LS 11943, prepared the record plat entitled, "CANBY RAILROAD RIGHT OF WAY ADDITION" on file in the office of the Yellow Medicine County Recorder. Moseng shows a found monument at the corner position but does not state what type of monument was found.
- Nov 18, 2010 Daniel L Bueltel, LS 43844, while working on Bueltel-Moseng land surveying Project No. 10-4071, notes he found a "1/2" pipe" and dimensions to this corner position.
- May 23, 2012 Matthew D. Runke LS 46171, while doing a re-monumentation survey for the Minnesota Department of Transportation, found a 3/8" iron rod at the section corner location. This corner was not excavated, because two sewer lines run North and South under this corner position. The installation of these pipes would have removed any evidence of the section corner location. The 3/8" iron rod fits well with plats to the north and south of this corner. Runke searched for and did not find the stone set at the center of section by Peterman in 1891. There is an old cemetery fence corner at the center of section, and holding with the 3/8" Iron Rod at the North Quarter, this fence corner would be within 1.5' of the North-South Quarter line. The Iron Rod matches the dimensions shown on Bueltel's 2010 survey to a 1/2" Pipe, and also fits well with Norgaard's 1926 dimensions to this corner and center of section. The 3/8" Iron Rod appears to be the best evidence of the location of this section corner. A Cast Iron capped 2"x30" Telspar monument was placed at the location of the 3/8" iron rod.