

Property & Public Services
Property Records Division
Yellow Medicine County, Minnesota
I hereby certify that the within instrument
was filed on May 7, 2013 at 10:30 AM

Janel Timm, Yellow Medicine County Recorder

By Debra Blood Deputy

N/C
BONNEMA SURVEYS INC
PROFESSIONAL LAND SURVEYING
1809 22ND STREET SW SUITE 104
WILLMAR MN 56201

CERTIFICATE OF LOCATION OF GOVERNMENT CORNER

North Quarter Corner of Section 23, Township 114, Range 45

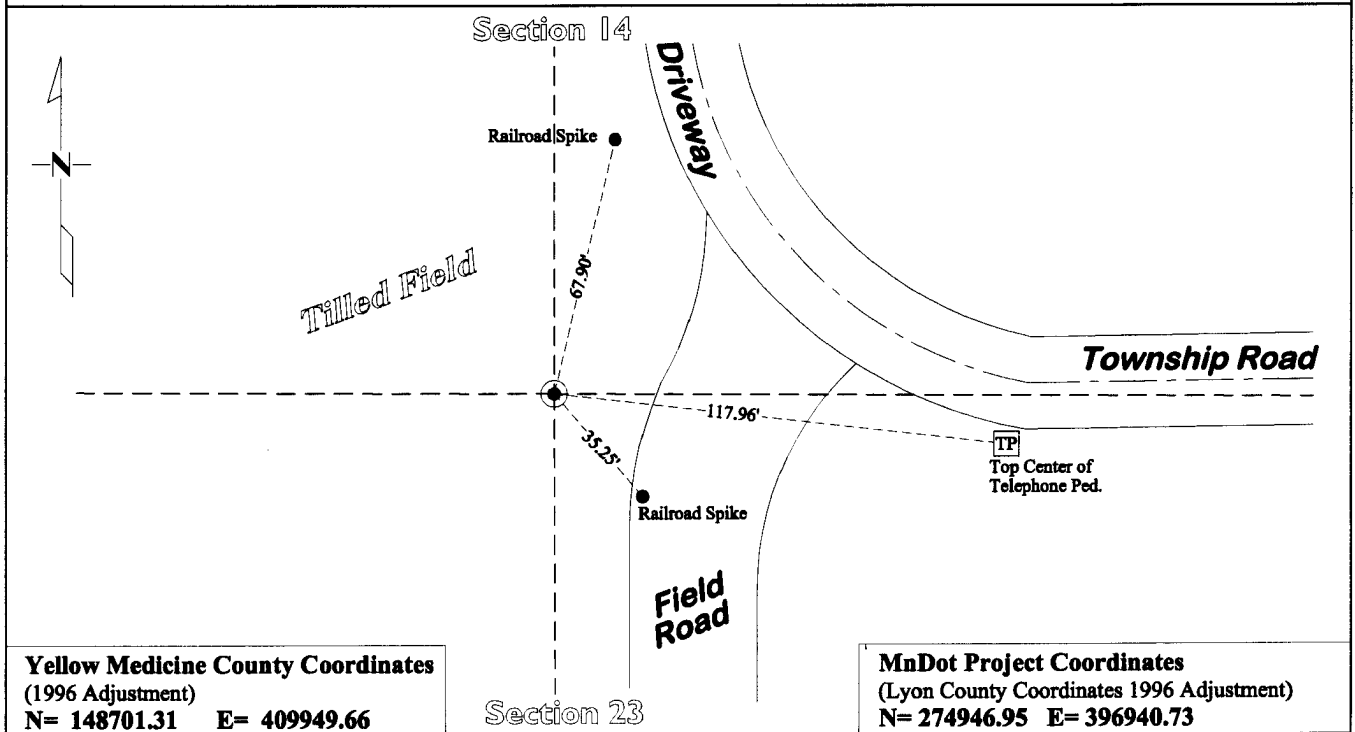
Fifth Principal Meridian, State of Minnesota, County of Yellow Medicine

At the corner location shown on the sketch:

On Dec. 6, 2012 found a Capped Iron Rod RLS 19092 (Marihart) with a 1 1/2" flat bar with "U" shaped
DATE top along the east side

left monument as found lowered monument removed monument (explain)

On Dec. 6, 2012 placed a Cast Iron Capped 2" x 30" Telspar Monument at the location of found
DATE capped iron rod



Yellow Medicine County Coordinates
(1996 Adjustment)
N= 148701.31 E= 409949.66

MnDot Project Coordinates
(Lyon County Coordinates 1996 Adjustment)
N= 274946.95 E= 396940.73

Statement of evidence for this corner location is on back of this page.

I hereby certify that this survey, plan, or report was prepared by me or under my direct supervision
and that I am a duly Licensed Land Surveyor under the laws of the state of Minnesota.

Signature Matthew D. Runke
Date 5/3/13

Typed or Printed Name: Matthew D. Runke
Reg. No. 46171

STATEMENT OF EVIDENCE

North Quarter Corner Section 23, T114N-R45W

1871

L. Harrington was contracted by the United States Government Land Office to perform the Original Public Land Survey in this township. He records in his field notes "Set a post for $\frac{1}{4}$ sec cor and raised mound as per instructions".

May 16, 1899

John Norgaard entered into a contract with the Yellow Medicine County Board for the "re-survey of all the section corners except the Township corners" in Yellow Medicine County. "The Monuments are Jasper Granite 2 feet long by 6 inches by 6 inches, all dimensions are given in feet." John Norgaard turned in his survey field notes to the Yellow Medicine County Recorder, who filed them as Doc No. 28417, on September 28, 1901. These field notes became County Surveyor's Record Book "B." On page 41 of book B he notes a dimension of 2645' from the NW corner to the North Quarter corner of this section.

Dec 12, 2012

Matthew D. Runke, LS 46171, while doing a remonumentation survey for the Minnesota Department of Transportation found a capped iron rod (RLS 19092 - Marhart) 1.0' below the surface of the field. He probed an area extending 2.5' north, 3.5' east, 3.5' south, 2' west of the found capped iron rod, for the Norgaard Jasper Stone and found nothing. He then hand dug under and around the Marhart Iron and found a $1\frac{1}{2}$ "x 24±" flat iron bar with a "u" shaped top along the east side of the capped iron rod. He excavated 2.5' deep by hand to try and remove the $1\frac{1}{2}$ " flat iron bar but was unsuccessful. This corner position is in a tilled field and it appears that the Jasper Stone was destroyed / removed by farm tillage in this area. The found $1\frac{1}{2}$ " flat iron bar appears to have been at this corner position for a long period of time and was driven straight and deep into the ground; apparently to mark this section corner position. The distance Norgaard records in 1899 from the NW corner to this corner is right on the measurement from the NW corner to the $1\frac{1}{2}$ " flat bar. The $1\frac{1}{2}$ " flat bar and the capped iron monument appear to be the best evidence of the location of this section corner. A cast iron capped 2" square by 30" long Telspar monument was placed 1.1' below the surface (in a field) at the position of the found capped iron, and $1\frac{1}{2}$ " flat bar.