

Property & Public Services  
Property Records Division  
Yellow Medicine County, Minnesota  
I hereby certify that the within instrument  
was filed on May 7, 2013 at 10:40 AM

Janel Timm, Yellow Medicine County Recorder

By Debra Blood Deputy

N/C  
BONNEMA SURVEYS INC  
PROFESSIONAL LAND SURVEYING  
1809 22ND STREET SW SUITE 104  
WILLMAR MN 56201

### CERTIFICATE OF LOCATION OF GOVERNMENT CORNER

**East Quarter** Corner of Section **25**, Township **114**, Range **45**

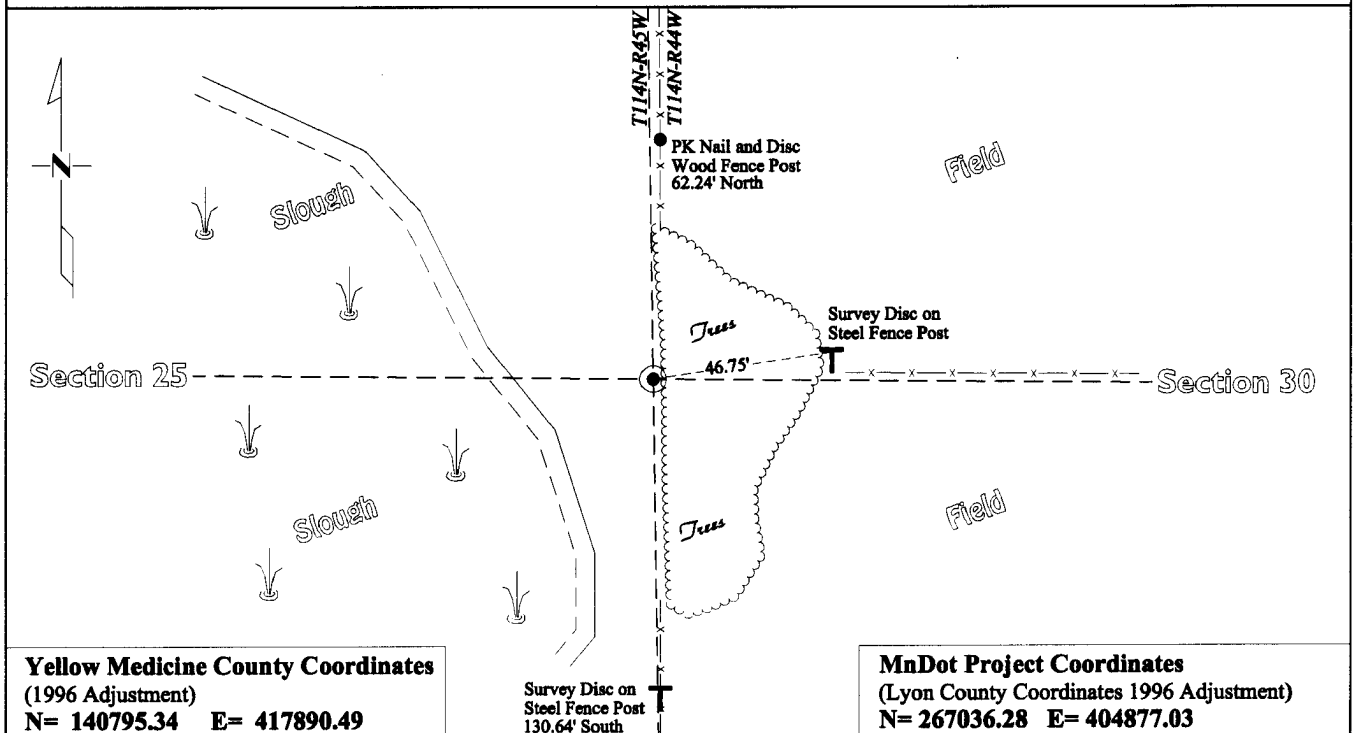
**Fifth** Principal Meridian, State of Minnesota, County of **Yellow Medicine**

At the corner location shown on the sketch:

On Dec. 6, 2012 found Nothing  
DATE

left monument as found  lowered monument  removed monument (explain)

On Dec. 6, 2012 placed a Cast Iron Capped 2" x 30" Telspar Monument on a on a straight line  
DATE  
prorotation using Norgaard's distances between the NE and SE corners of this Section



**Yellow Medicine County Coordinates**  
(1996 Adjustment)  
N= 140795.34 E= 417890.49

Survey Disc on  
Steel Fence Post  
130.64' South

**MnDot Project Coordinates**  
(Lyon County Coordinates 1996 Adjustment)  
N= 267036.28 E= 404877.03

Statement of evidence for this corner location is on back of this page.

I hereby certify that this survey, plan, or report was prepared by me or under my direct supervision and that I am a duly Licensed Land Surveyor under the laws of the state of Minnesota.

Signature Matthew D. Runke  
Date 5/3/13

Typed or Printed Name: Matthew D. Runke  
Reg. No. 46171

# STATEMENT OF EVIDENCE

---

## East Quarter Corner Section 25, T114N-R45W

- 1858 W.J. Neely was contracted by the United States Government Land Office to perform the Original Public Land Survey in this township. He records in his field notes, "set qr sec post deposited coal made mound trench & pits as per instruction".
- May 16, 1899 John Norgaard entered into a contract with the Yellow Medicine County Board for the "re-survey of all the section corners except the Township corners" in Yellow Medicine County. "The Monuments are Jasper Granite 2 feet long by 6 inches by 6 inches, all dimensions are given in feet." John Norgaard turned in his survey field notes to the Yellow Medicine County Recorder, who filed them as Doc No. 28417, on September 28, 1901. These field notes became the County Surveyor's Record Book "B." On pages 39&41 of Book B he notes dimensions along the east line of this section.
- December 6, 2012 Matthew D. Runke, LS 46171, while doing a re-monumentation survey for the Minnesota Department of Transportation, hand dug an approximately 1' deep area extending 4.5' north, 3.5' south, 5.0' east, and 3.0' west of a straight line proration along the east line of this section using Norgaard 1899 dimensions. There was a lot of old laid down fence, an old corner fence post and multiple field stones about 6" in size near this corner position which made for a difficult search. None of the stones found were standing upright, pointed, chiseled or square topped which would be typical of a surveyor set stone, and we did not find the square cut Jasper Stone as called for Norgaard in 1899. The straight line proration position fits well with the fence lines running North, South and East and is within 2' of the old tipped over wood fence corner post. A Cast Iron capped 2"x30" Telspar Monument with a ring of field stones around it was placed on a straight line and proration using Norgaard's 1899 distances between the northeast and southeast corners of this Section. (NE to E $\frac{1}{4}$  - Measured 2644.22' recorded 2644' and E $\frac{1}{4}$  to SE - Measured 2642.22, recorded 2642')