

Doc# 257660 Fee: \$0.00 2 Pages
 Property & Public Services
 Property Records Division
 Yellow Medicine County, Minnesota
 I hereby certify that the within instrument
 was filed on May 7, 2013 at 10:45 AM

Janel Timm, Yellow Medicine County Recorder

By Debra Blood Deputy

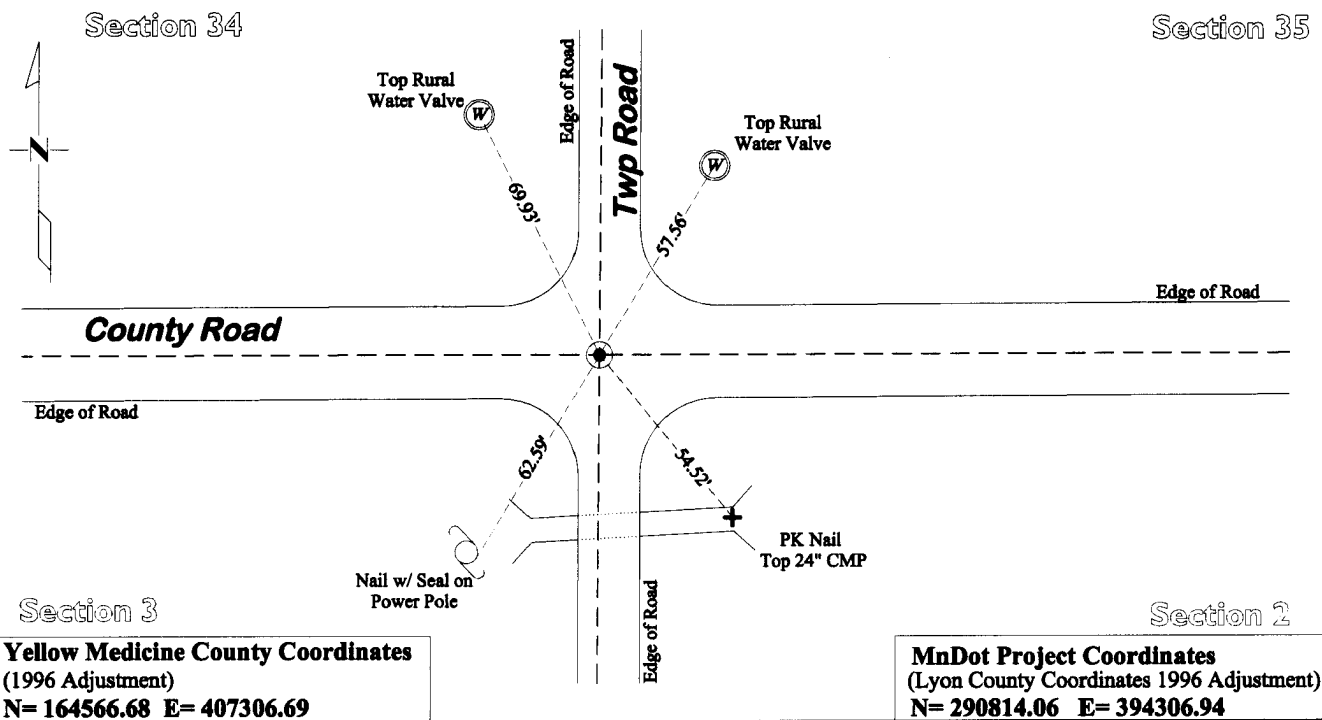
N/C
 BONNEMA SURVEYS INC
 PROFESSIONAL LAND SURVEYING
 1809 22ND STREET SW SUITE 104
 WILLMAR MN 56201

CERTIFICATE OF LOCATION OF GOVERNMENT CORNER

Northeast Corner of Section **3**, Township **114**, Range **45**
Fifth Principal Meridian, State of Minnesota, County of **Yellow Medicine**

At the corner location shown on the sketch:

- On August 2, 2012 found a 1/2" Iron rod 0.2' below the surface over a 6" x 7" x 28" Jasper stone
DATE 3.8' below the surface
- left monument as found lowered monument removed monument (explain)
- On April 3, 2013 placed a Cast Iron Capped 2" x 30" Telspar Monument at the location of the Iron rod
DATE and jasper stone



Yellow Medicine County Coordinates
 (1996 Adjustment)
 N= 164566.68 E= 407306.69

MnDot Project Coordinates
 (Lyon County Coordinates 1996 Adjustment)
 N= 290814.06 E= 394306.94

Statement of evidence for this corner location is on back of this page.

I hereby certify that this survey, plan, or report was prepared by me or under my direct supervision and that I am a duly Licensed Land Surveyor under the laws of the state of Minnesota.

Signature [Signature]
 Date 5/3/13

Typed or Printed Name: Joshua M. Stern
 Reg. No. 46169

STATEMENT OF EVIDENCE

Northeast Corner Section 3, T114N-R45W

- 1858 W.J. Neely was contracted by the United States Government Land Office to perform the Original Public Land Survey of this township boundary. He records in his field notes, "Set post corner to sect 2, 3, 34 & 35 deposited coal made mound Trench & pits as per instructions."
- May 16, 1899 John Norgaard entered into a contract with the Yellow Medicine County Board for the "re-survey of all the section corners except the Township corners" in Yellow Medicine County. "The Monuments are Jasper Granite 2 feet long by 6" x 6 inches, all dimensions are given in feet." John Norgaard turned in his survey field notes to the Yellow Medicine County Recorder, who filed them as Doc No. 28417, on September 28, 1901. These field notes became the County Surveyor's Record Book "B." On these pages he dimensions to this corner position.
- 1899-1901 John Norgaard, County Surveyor, records in County Surveyor's Record Book B Pages 121 & 190, "Located in the center of road running East & North and on lines of improvements South & West as correspond with the platting of the village of Canby. Set top of monument level with ground."
- 1899-1901 John Norgaard, County Surveyor, records in the County Surveyor's Record Book, page 452 "NE Corner Section 3 Iron and Brick 33 ft N and 33 ft East."
- 1915 John Norgaard, County Surveyor, notes in the County Surveyor's Record Book, pg 354, "Found Jasper Stone even with ground" and dimensions to this corner position.
- August 1926 John Norgaard, County Surveyor, notes in the County Surveyor's Record Book, pg 505, "Monument 8 Feet North of Jasper Monument as correspond with platting of Canby."
- 1941 MNDOT S.P. 871 | T.H. 75 Book 2 Align - Land Ties - Topo pages 2-3 and 2-2 notes "Cor Assumed at intersection of Roads."
- 1941 MNDOT S.P. 871 | T.H. 75 Books 2 & 3 Align - Land Ties - Topo pages 10-2 and 18-2, notes "Assumed Rod int."
- 1941 MNDOT S.P. 871 | T.H. 75 Book 4 Align - Land Ties - Topo page 18-3, dimensions from the east quarter corner of Section 34 T115N R45W and from the highway centerline.
- Oct 30, 1973 Willard Pellinen, RLS 9626, Filed a Certificate of Location of Government Corner with the County Recorder, and notes "Found R.R. spike. Also found and used by J. Boerhave in 1969. Distance to southwest corner Section 34 is very nearly Canby Plat distance." He also established 4 section corner witness ties.
- Nov 18, 2010 Daniel L Bueltel, RLS 43844, on project No. 10-4071, records he found a "1" iron" and dimensions to this corner position.
- April 3, 2013 Joshua M. Stern, Land Surveyor #46169, while doing a remonumentation survey for the Minnesota Department of Transportation found a 1/2"x18" iron rod 0.3' below the surface. He dug a 5.6' deep hole that covered an area extending 3.0' north, 3.0' south, 6.0' east, and 4.0' west of found iron rod. The top of original top soil was observed at a depth of 4.0' below the surface. At a depth of 3.7' he found a 7"x6"x28" Jasper stone with traces of wood and a flat cast iron piece alongside of it. The Jasper stone is evidently the 1899 Norgaard stone and is the best evidence of the location of the Original Public Land Survey corner. A cast iron capped 2" square by 30" long iron telspar monument was placed at the surface at the location of the found iron rod over the Jasper stone.