

Janel Timm, Yellow Medicine County Recorder

By Debra Blood Deputy

N/C
 BONNEMA SURVEYS INC
 PROFESSIONAL LAND SURVEYING
 1809 22ND STREET SW SUITE 104
 WILLMAR MN 56201

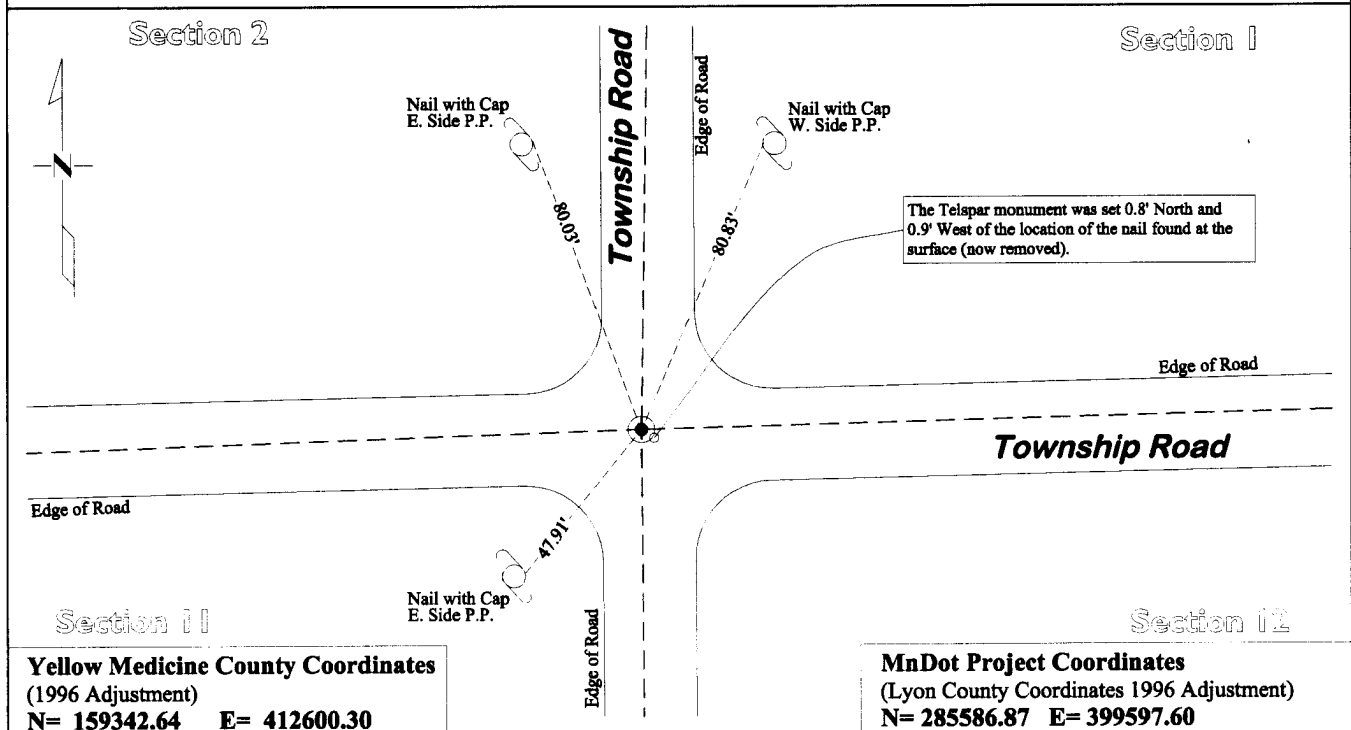
CERTIFICATE OF LOCATION OF GOVERNMENT CORNER

Northeast Corner of Section **11**, Township **114**, Range **45**

Fifth Principal Meridian, State of Minnesota, County of **Yellow Medicine**

At the corner location shown on the sketch:

- On May 29, 2012 found a Nail at Road Surface and 7 x 7 x 20 inch Jasper Stone 2.3' below surface
DATE
- left monument as found lowered monument removed monument (explain)
- On August 7, 2012 placed a Cast Iron Capped 2" x 30" Telspar Monument at the location of the Jasper
DATE Stone



Yellow Medicine County Coordinates
 (1996 Adjustment)
N= 159342.64 E= 412600.30

MnDot Project Coordinates
 (Lyon County Coordinates 1996 Adjustment)
N= 285586.87 E= 399597.60

Statement of evidence for this corner location is on back of this page.

I hereby certify that this survey, plan, or report was prepared by me or under my direct supervision and that I am a duly Licensed Land Surveyor under the laws of the state of Minnesota.

Signature *Debra Blood*
 Date May 10, 2013

Typed or Printed Name: Duane A. Bonnema
 Reg. No. 14895

STATEMENT OF EVIDENCE

Northeast Corner Section 11, T114N-R45W

- 1871 L. Harrington was contracted by the United States Government Land Office to perform the Original Public Land Survey in this township. He records in his field notes "Set a post for the corner to Secs 1, 2, 11, & 12 raised mound as per instructions".
- May 16, 1899 John Norgaard entered into a contract with the Yellow Medicine County Board for the "re-survey of all the section corners except the Township Corners" in Yellow Medicine County. "The Monuments are Jasper Granite 2 feet long by 6 inches by 6 inches, all dimensions are given in feet." John Norgaard turned in his survey field notes to the Yellow Medicine County Recorder, who filed them as Doc No. 28417, on September 28, 1901. These field notes became the County Surveyor's Record Book "B".
- 1899-1901 John Norgaard, County Surveyor, records in County Surveyor's Record Book B, page 194, "Located at the intersection of roads running North, South, East & West as correspond with distances North & South. Set top of Monument 2" above ground."
- 1940 The Yellow Medicine County Highway Department tie book, Norman Twp, shows that they recorded 3 witness ties to the corner, however they do not state what type of monument that observed at the corner.
- July 19, 2012 Duane A. Bonnema, Land Surveyor #14895 while doing a remonumentation survey for the Minnesota Department of Transportation, found a nail at the road surface. He dug 5.0' deep hole that covered an area extending 2.5' north, 2.5' south, 7.0' east, and 4.0' west of the nail location. The top of the original topsoil was observed to be at a depth of 3.0' below the surface. At a depth of 2.3' he found a 7" x 7" x 20" square cut quarried granite stone. A meeting was held with Lyle Moseng and Daniel Bueltel, (past and current Lyon County Surveyors) and at this meeting it was mutually agreed that the 7" x 7" x 20" square cut quarried granite stone appears to be the best available evidence of this Section Corner location. On August 7, 2012, a cast iron capped 2" square by 30" long iron telspar monument was placed at the surface at the position of the found 7" x 7" x 20" square cut quarried granite stone. The newly placed MNDOT telspar monument is located 0.80' north and 0.95' east of the nail found at the surface.