

N/C  
 BONNEMA SURVEYS INC  
 PROFESSIONAL LAND SURVEYING  
 1809 22ND STREET SW SUITE 104  
 WILLMAR MN 56201

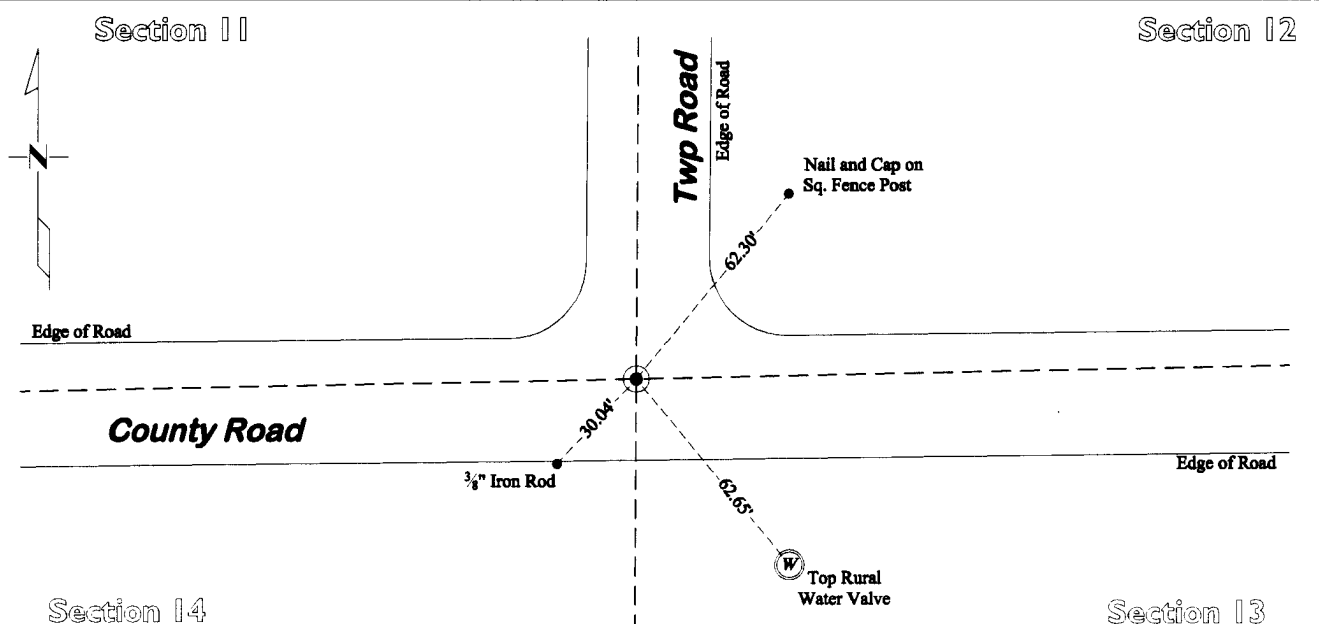
Janel Timm, Yellow Medicine County Recorder  
 By Debra Blood Deputy

## CERTIFICATE OF LOCATION OF GOVERNMENT CORNER

**Northeast** Corner of Section **14**, Township **114**, Range **45**  
**Fifth** Principal Meridian, State of Minnesota, County of **Yellow Medicine**

At the corner location shown on the sketch:

- On May 23, 2012 found a 8" spike 0.7' below the surface and a 5 x 7 x 23 inch Jasper Stone  
DATE 1.4' below the surface
- left monument as found       lowered monument       removed monument (explain)
- On Aug. 7, 2012 placed a Cast Iron Capped 2" x 30" Telspar Monument at the location of the found  
DATE spike and Jasper Stone



**Yellow Medicine County Coordinates**  
 (1996 Adjustment)  
 N= 154050.87 E= 412580.78

**MnDot Project Coordinates**  
 (Lyon County Coordinates 1996 Adjustment)  
 N= 280295.04 E= 399574.99

Statement of evidence for this corner location is on back of this page.

I hereby certify that this survey, plan, or report was prepared by me or under my direct supervision and that I am a duly Licensed Land Surveyor under the laws of the state of Minnesota.

Signature Duane A. Bonnema  
 Date May 6, 2013

Typed or Printed Name: Duane A. Bonnema  
 Reg. No. 14895

# STATEMENT OF EVIDENCE

## Northeast Corner Section 14, T114N-R45W

- 1871 L. Harrington was contracted by the United States Government Land Office to perform the Original Public Land Survey in this township. He records in his field notes, "Set a post for the corner of secs 11, 12, 13 & 14 raised mound as per instructions."
- May 16, 1899 John Norgaard entered into a contract with the Yellow Medicine County Board for the "re-survey of all the section corners except the Township corners" in Yellow Medicine County. "The Monuments are Jasper Granite 2 feet long by 6 inches by 6 inches, all dimensions are given in feet." John Norgaard turned in his survey field notes to the Yellow Medicine County Recorder, who filed them as Doc No. 28417, on September 28, 1901. These field notes became the County Surveyor's Record Book "B"
- 1899-1901 John Norgaard, County Surveyor, records in County Surveyor's Record Book B, page 41, that he measured to this corner position during his re-survey of section corners in Yellow Medicine County.
- 1899-1901 John Norgaard, County Surveyor records in County Surveyors Record Book B Page 195, at the NE corner section 14-114-45 "Located according to testimony of adjoining land owner 33 feet south and 25 feet east of trees as were planted when the government corner were plain. Set top of monument 2" above ground."
- September 1940 C.E. Lange, did a survey in Section 13, as recorded in the Yellow Medicine County Surveyor's Record Book A, page 549, where he notes "found stone mon."
- 1951 MnDOT Alignments & Land Ties Book 2 Page 2-4, records "Field stone at surface of RD. INT of RDS E & W & N" and then shows a dimension of 3612' east to this "stone." (the current distance is 3607)
- 1951 MnDOT Alignments & Land Ties Book 2 Page 2-6, shows the dimension from the center of the State Highway North to the NE corner to section 14 as 3730.8 feet. (The current distance is 3731).
- Feb 1951 MnDOT Alignments & Land Ties Book 2 Pg 2-32, records "Found field stone at surface of RD" and records 3 section corner witness ties.
- June 1952 MnDOT State Project No. 8709-02, Plan sheet no. 7, shows this corner, but does not mention what type of monument was found.
- 1964 The County Highway Department records in the Norman Township witness tie book, "Ck Mon. in place - 1964." (Stone at surface - MHO 1951.)
- July 18, 2012 Duane A. Bonnema, LS 14895, while doing a re-monumentation survey for the Minnesota Department of Transportation, dug a 4.5' deep hole which covered an area extending 2.5' north, 3.0' south, 4.0' east, and 6.0' west, of this section corner location. At a depth of 0.7' an 8" spike was found. At a depth of 1.4' a 5"x7"x2' quarried granite jasper stone was found. A cast iron capped 2" square by 30" long iron telspar monument was placed at the surface at the position of the found spike and 5"x7"x2' quarried granite jasper stone.