

Property & Public Services
Property Records Division
Yellow Medicine County, Minnesota
I hereby certify that the within instrument
was filed on May 7, 2013 at 11:15 AM

Janel Timm, Yellow Medicine County Recorder

By Debra Blood Deputy

N/C
BONNEMA SURVEYS INC
PROFESSIONAL LAND SURVEYING
1809 22ND STREET SW SUITE 104
WILLMAR MN 56201

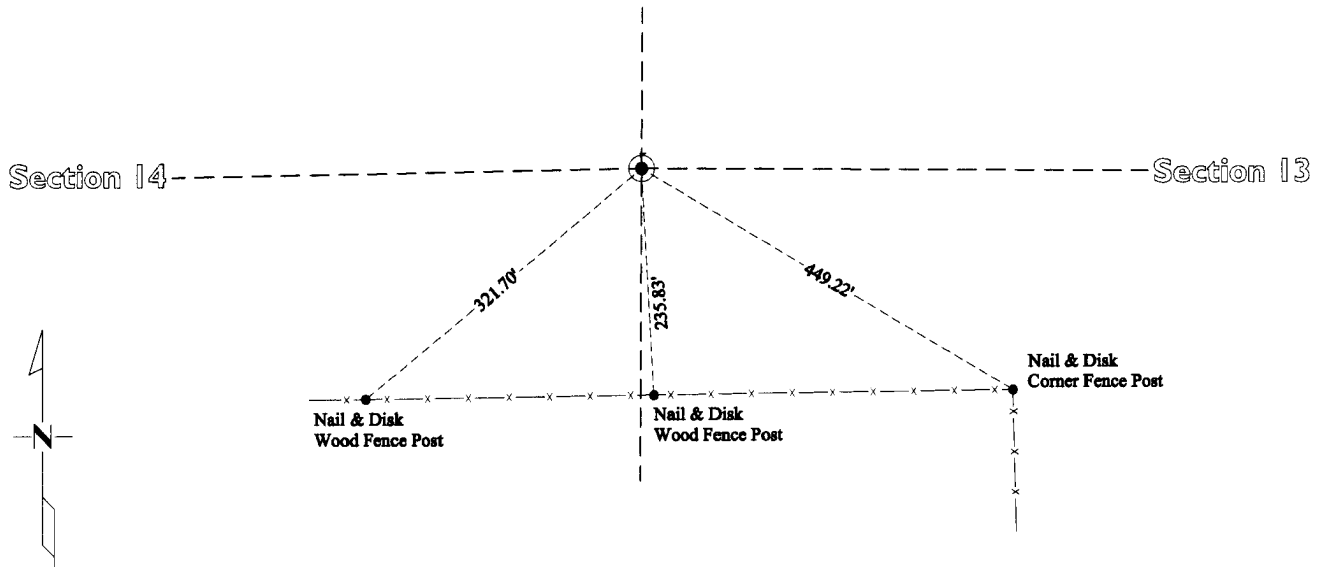
CERTIFICATE OF LOCATION OF GOVERNMENT CORNER

East Quarter Corner of Section **14**, Township **114**, Range **45**

Fifth Principal Meridian, State of Minnesota, County of **Yellow Medicine**

At the corner location shown on the sketch:

- On March 7, 2013 found no evidence of section corner monumentation
DATE
- left monument as found lowered monument removed monument (explain)
- On March 7, 2013 placed a Cast Iron Capped 2" x 30" Telspar Monument at the midpoint of a line
DATE between the northeast and southeast corners of Section 14



Yellow Medicine County Coordinates
(1996 Adjustment)
N= 151399.58 E= 412588.67

MnDot Project Coordinates
(Lyon County Coordinates 1996 Adjustment)
N= 277643.71 E= 399581.34

Statement of evidence for this corner location is on back of this page.

I hereby certify that this survey, plan, or report was prepared by me or under my direct supervision and that I am a duly Licensed Land Surveyor under the laws of the state of Minnesota.

Signature [Signature]
Date May 6, 2013

Typed or Printed Name: Duane A. Bonnema
Reg. No. 14895

STATEMENT OF EVIDENCE

East Quarter Corner Section 14, T114N-R45W

1871

L. Harrington was contracted by the United States Government Land Office to perform the Original Public Land Survey in this township. He records in his field notes, "Set a post for ¼ sec cor raised mound as per instructions".

March 7, 2013

Duane A. Bonnema, LS 14895, while doing a remonumentation survey for Minnesota Department of Transportation, searched an area extending 25' North, 25' South, 25' East and 25' West of a straight line and split position with a metal locator and found no evidence of monumentation at this corner position. Due to the 142 year gap in survey activity, in survey records and in perpetuation of this corner position, we did not excavate. This position also falls in of a tilled field, any evidence of this section corner position would have been destroyed by tillage. Bonnema found Norgaard's Jasper stones at the NE and SE corners of this section and placed a cast iron capped 2" square by 30" long iron telspar monument at the mid point on a line between the northeast and southeast corners of this section. This position was evaluated by considering how its location affects fence lines and occupation lines at the quarter lines and sixteenth lines in sections 13 and 14 and 1 matches very well.