

Property & Public Services
Property Records Division
Yellow Medicine County, Minnesota
I hereby certify that the within instrument
was filed on May 7, 2013 at 11:20 AM

Janel Timm, Yellow Medicine County Recorder

By Debra Blood Deputy

N/C
BONNEMA SURVEYS INC
PROFESSIONAL LAND SURVEYING
1809 22ND STREET SW SUITE 104
WILLMAR MN 56201

CERTIFICATE OF LOCATION OF GOVERNMENT CORNER

Northeast Corner of Section **15**, Township **114**, Range **45**

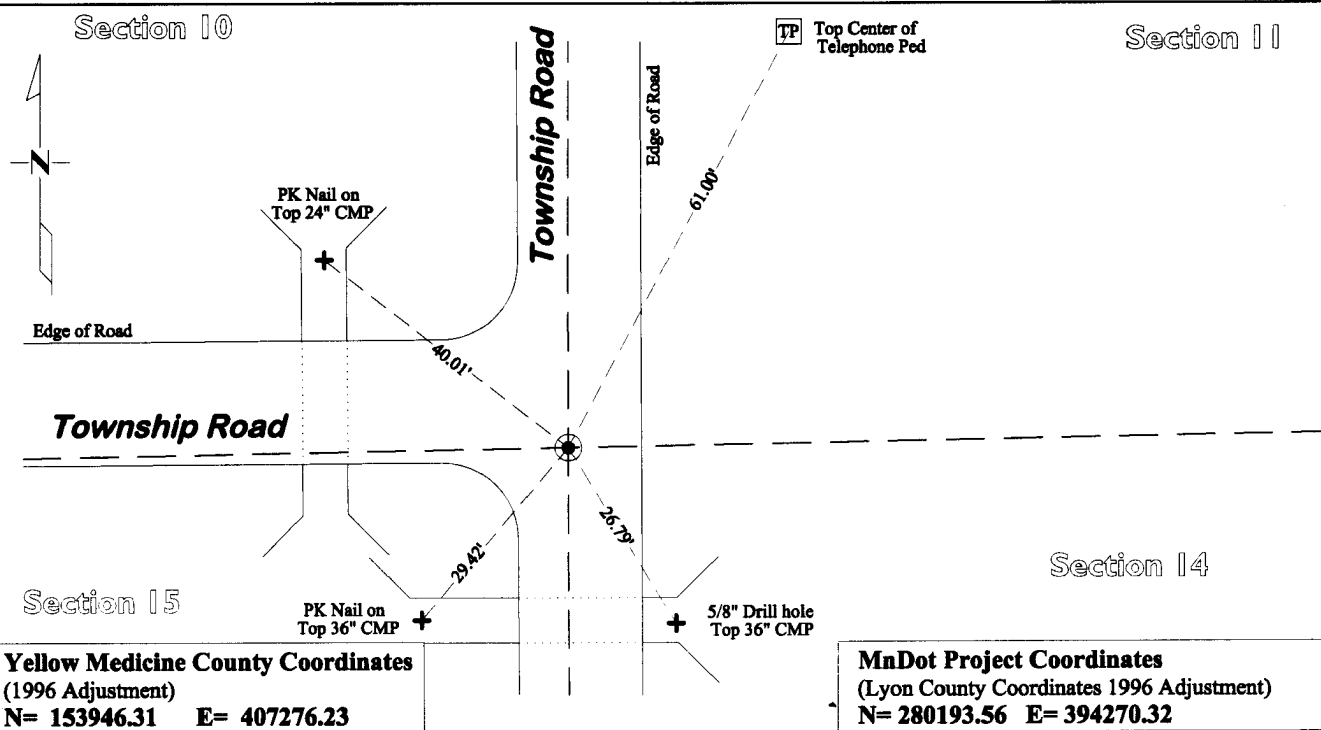
Fifth Principal Meridian, State of Minnesota, County of **Yellow Medicine**

At the corner location shown on the sketch:

On May 23, 2012 found a 2 1/4" x 16" Iron Pipe RLS 11943 0.3' below the surface
DATE

left monument as found lowered monument removed monument (explain)

On March 1, 2012 replaced a Cast Iron Capped 2" x 30" Telspar Monument at the location of the iron pipe
DATE



Yellow Medicine County Coordinates
(1996 Adjustment)
N= 153946.31 E= 407276.23

MnDot Project Coordinates
(Lyon County Coordinates 1996 Adjustment)
N= 280193.56 E= 394270.32

Statement of evidence for this corner location is on back of this page.

I hereby certify that this survey, plan, or report was prepared by me or under my direct supervision and that I am a duly Licensed Land Surveyor under the laws of the state of Minnesota.

Signature [Signature]

Typed or Printed Name: Duane A. Bonnema

Date May 6, 2013

Reg. No. 14895

STATEMENT OF EVIDENCE

Northeast Corner Section 15, T114N-R45W

- 1871 L. Harrington was contracted by the United States Government Land Office to perform the Original Public Land Survey in this township. He records in his field notes, "Set a post for the corner to section 10, 11, 14 & 15 raised mounds as per instructions."
- May 16, 1899 John Norgaard entered into a contract with the Yellow Medicine County Board for the "re-survey of all the section corners except the Township corners" in Yellow Medicine County. "The Monuments are Jasper Granite 2 feet long by 6 inches by 6 inches, all dimensions are given in feet." John Norgaard turned in his survey field notes to the Yellow Medicine County Recorder, who filed them as Doc No. 28417, on September 28, 1901. These field notes became the County Surveyor's Record Book "B".
- 1899-1901 John Norgaard, County Surveyor, records in the County Survey Record Book B, page 41, records that he measured to the corner while doing the re-survey in Yellow Medicine County.
- 1899 - 1901 John Norgaard, County Surveyor, records in the County Surveyor's Record Book B, page 195, "Found stone in the center of road running north & south and in fence line running east Stone set by adjoining landowner in the government mound, when plain. Set top of monument level with ground."
- 1918 Mr. Youngdale, records in the County Surveyor's Record Book, page 397, "found jasper monument".
- 1949 MnDOT State Project No. 8709-02, Plan sheet no. 6 dimensions from the Highway 68 Center line to the Section Corner, but does not mention what type of monument was found.
- 1951 Yellow Medicine County Highway Department Corner tie book, Norman Township shows that they found "stone 18" deep" and recorded 3 section corner witness ties.
- 1951 MnDOT Alignments & Land Ties Book 2 page 2-3, records "Stone Inp. Down 18" at INT of RDS. N & S fence E, FR. ENT W." and records a distance of 1751' from the highway center line to this corner.
- 1951 MnDOT Alignments & Land Ties Book 2 page 2-4, shows the NE corner of Section 15 and a distance of 1695.7' from the corner to the centerline of the highway.
- 1951 MnDOT Alignments & Land Ties Book 2 page 2-31, records "Found stone down 18" placed RR SPK. flush above stone."
- July 18, 2012 Duane A. Bonnema Land Surveyor #14895, while doing a remonumentation survey for the Minnesota Department of Transportation, found a 2 1/4" x 16" iron pipe at the surface. He dug a 4.0' deep hole which covered an area extending 10.0' north, 8.0' south, 2.0' east, and 2.0' west of the found 2 1/4" x 16" iron pipe. No additional evidence of section corner monumentation was found. The top of the original topsoil was observed at a depth of 2.5' below the surface. This area was evidently disturbed by ditch and road construction which probably destroyed the evidence of section corner monumentation. A cast iron capped 2" square by 30" long iron telspar monument was placed at the surface at the position of the found 2 1/4" x 16" iron pipe. This position agrees within 3-5' of the MnDOT distances recorded in 1951.