

Property & Public Services
Property Records Division
Yellow Medicine County, Minnesota
I hereby certify that the within instrument
was filed on May 7, 2013 at 11:25 AM

Janel Timm, Yellow Medicine County Recorder

By Debra Blood Deputy

N/C
BONNEMA SURVEYS INC
PROFESSIONAL LAND SURVEYING
1809 22ND STREET SW SUITE 104
WILLMAR MN 56201

CERTIFICATE OF LOCATION OF GOVERNMENT CORNER

East Quarter Corner of Section **15**, Township **114**, Range **45**

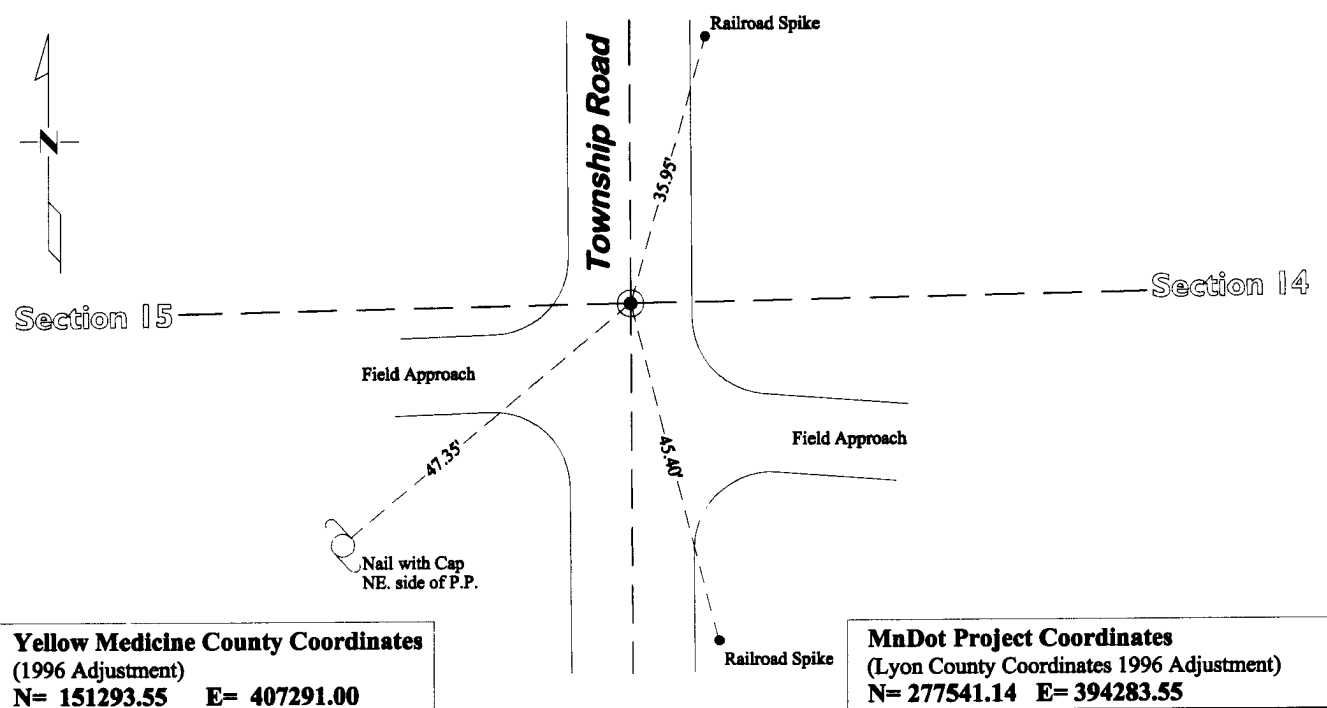
Fifth Principal Meridian, State of Minnesota, County of **Yellow Medicine**

At the corner location shown on the sketch:

On July 19, 2012 found a Iron Pipe RLS 19092 0.1' below surface and Machinery Part with oak stake
DATE along Southeast side 2.0' below surface

left monument as found lowered monument removed monument (explain)

On Dec. 12, 2012 placed a Cast Iron Capped 2" x 30" Telspar Monument at the Location of the Iron Pipe
DATE and the machinery part with oak stake



Yellow Medicine County Coordinates
(1996 Adjustment)
N= 151293.55 E= 407291.00

MnDot Project Coordinates
(Lyon County Coordinates 1996 Adjustment)
N= 277541.14 E= 394283.55

Statement of evidence for this corner location is on back of this page.

I hereby certify that this survey, plan, or report was prepared by me or under my direct supervision and that I am a duly Licensed Land Surveyor under the laws of the state of Minnesota.

Signature [Signature]
Date May 6, 2013

Typed or Printed Name: Duane A. Bonnema
Reg. No. 14895

STATEMENT OF EVIDENCE

East Quarter Corner Section 15, T114N-R45W

- 1871 L. Harrington was contracted by the United States Government Land Office to perform the Original Public Land Survey in this township. He records in his field notes, "Set a post for 1/4 sec cor raised mound as per instructions."
- May 16, 1899 John Norgaard entered into a contract with the Yellow Medicine County Board for the "re-survey of all the section corners except the Township corners" in Yellow Medicine County. "The Monuments are Jasper Granite 2 feet long by 6 inches by 6 inches, all dimensions are given in feet." John Norgaard turned in his survey field notes to the Yellow Medicine County Recorder, who filed them as Doc No. 28417, on September 28, 1901. These field notes became the County Surveyor's Record Book "B".
- 1899-1901 John Norgaard, County Surveyor, records in the County Survey Record Book B, page 41, that he measured to the corner while doing a re-survey of section corners across the county at the request of the County Board.
- 1918 Mr. Youngdale, records in the County Surveyor's Record Book, page 397, "found iron pin 6" below surface also found old decayed wooden monum." It appears as though the wooden monum. and the iron pin were found in different locations, as he shows different dimensions from these two objects east and west to corner fence posts.
- July 19, 2012 Duane A. Bonnema Land Surveyor #14895, while doing a remonumentation survey for the Minnesota Department of Transportation, found a capped iron pipe (RLS 19092, Marhart) at the surface. He dug a 4.0 deep hole which covered an area extending 5.0' north, 6.0' south, 3.0' east, and 3.0' west of the found capped iron rod. At a depth of 2.0' he found an old machinery part, with an oak stake along the southeast side. The half mile distance to the south is within a foot of John Norgaard's measurement in 1900. The half mile to the north is about 7 feet off the Norgaard's measurement in 1900. The half mile to the north is about 7 feet off the Norgaard distances which is a bit unusual considering current half mile dimensions are generally within 3' of Norgaards recorded distances. A cast iron capped 2" square by 30" long iron telspar monument was placed at the surface at the position of the found capped iron rod, machinery part and oak stake.