

Property & Public Services
Property Records Division
Yellow Medicine County, Minnesota
I hereby certify that the within instrument
was filed on May 7, 2013 at 11:30 AM

Janel Timm, Yellow Medicine County Recorder

By Debra Blood Deputy

N/C
BONNEMA SURVEYS INC
PROFESSIONAL LAND SURVEYING
1809 22ND STREET SW SUITE 104
WILLMAR MN 56201

CERTIFICATE OF LOCATION OF GOVERNMENT CORNER

North Quarter Corner of Section **24**, Township **114**, Range **45**

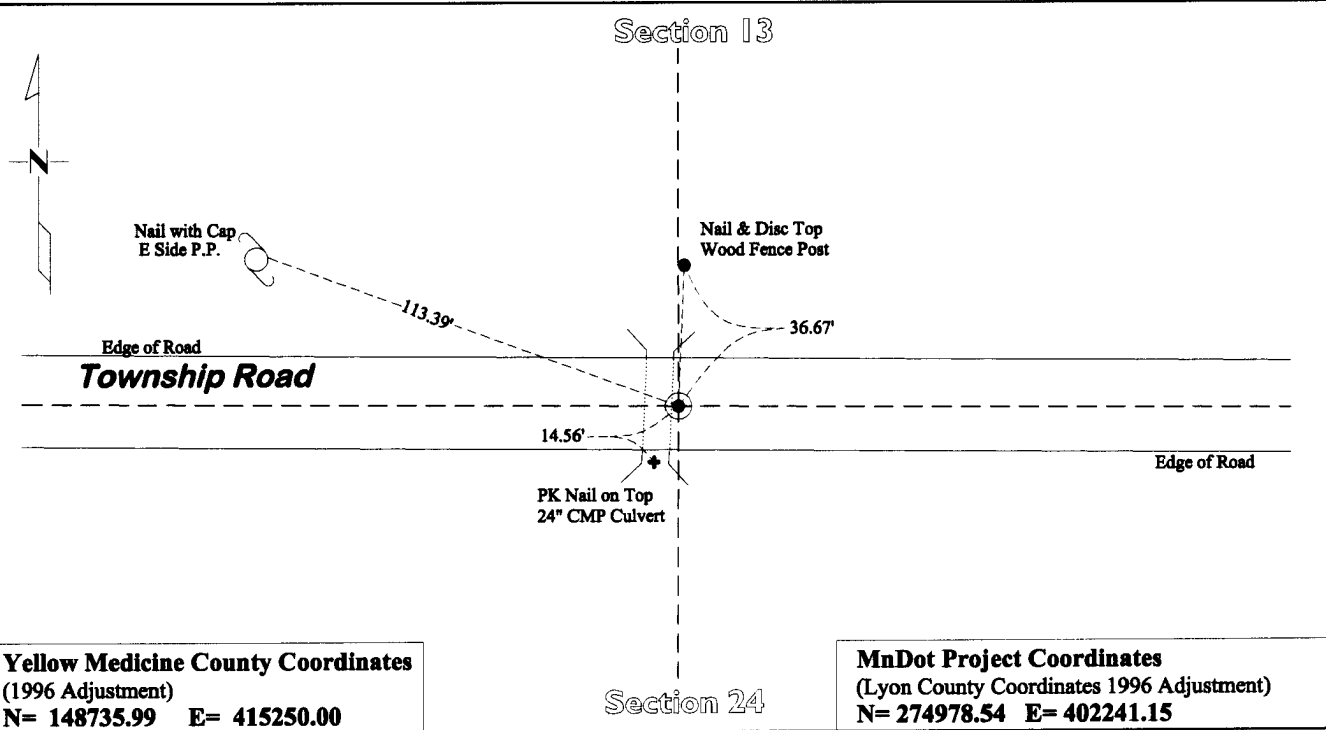
Fifth Principal Meridian, State of Minnesota, County of **Yellow Medicine**

At the corner location shown on the sketch:

On July 30, 2012 found a Capped Iron Pipe 0.2' Below Road Surface RLS 19092
DATE

left monument as found lowered monument removed monument (explain)

On Dec. 12, 2012 placed a Cast Iron Capped 2" x 30" Telspar Monument at the location of the iron pipe
DATE



Yellow Medicine County Coordinates
(1996 Adjustment)
N= 148735.99 E= 415250.00

MnDot Project Coordinates
(Lyon County Coordinates 1996 Adjustment)
N= 274978.54 E= 402241.15

Statement of evidence for this corner location is on back of this page.

I hereby certify that this survey, plan, or report was prepared by me or under my direct supervision and that I am a duly Licensed Land Surveyor under the laws of the state of Minnesota.

Signature [Signature]
Date May 6, 2013

Typed or Printed Name: Duane A. Bonnema
Reg. No. 14895

STATEMENT OF EVIDENCE

North Quarter Corner Section 24, T114N-R45W

- 1871 L. Harrington was contracted by the United States Government Land Office to perform the Original Public Land Survey in this township. He records in his field notes, "Set a post for 1/4 sec cor raised mound as per instructions".
- July 21, 1914 The County Surveyor's Record Book page 330-331 contains a map entitled "Plat of County Road in Norman and Hammer, Yellow Medicine County" This map records the bearings and distances of a county road that extends from Porter to Canby, However the only dimension is to the center of section Sec 10, T114N R 45W.
- 1940 C.E. Lange, County Surveyor, records in the Yellow Medicine County Surveyor's Record Book A, page 549, "chopped out groove in so. Side conc. box culvert".
- 1951 MnDOT Alignments & Land Ties Book 2 page 2-7, notes "1/4 Cor assumed to be at INT. of fence N and line between Sec. Corners." They then note the distance from the highway center line east to the assumed corner 1097'.
- June 1952 MnDOT State Project No. 8709-02, Plan sheet no. 7 dimensions from the Highway 68 Center line to the Section Corner, but does not mention what type of monument was found.
- July 30, 2012 Duane A. Bonnema Land Surveyor #14895, while doing a remonumentation survey for the Minnesota Department of Transportation, found a capped iron pipe (RLS 11943 - Moseng) at the surface of the road and dug at this corner position. This position lands just east of a large, poured in place, culvert. After digging for just a few minutes it became evident that this culvert trench was backfilled with field stones. This area of stones covers the Section corner dig search area. The intended section corner dig was abandoned. At the time of the dig we did not have the Lange survey, so we did not search for the "chipped out groove in the south side of the concrete box culvert. A cast iron capped 2" square by 30" long iron telspar monument was placed at the surface at the position of the found capped iron pipe. The distance recorded in 1951 from the highway center line east to the assumed 1/4 corners is 1097 feet which is the same distance currently measured.