

Property & Public Services
Property Records Division
Yellow Medicine County, Minnesota
I hereby certify that the within instrument
was filed on May 7, 2013 at 11:35 AM

Janel Timm, Yellow Medicine County Recorder

By Debra Bland Deputy

N/C
BONNEMA SURVEYS INC
PROFESSIONAL LAND SURVEYING
1809 22ND STREET SW SUITE 104
WILLMAR MN 56201

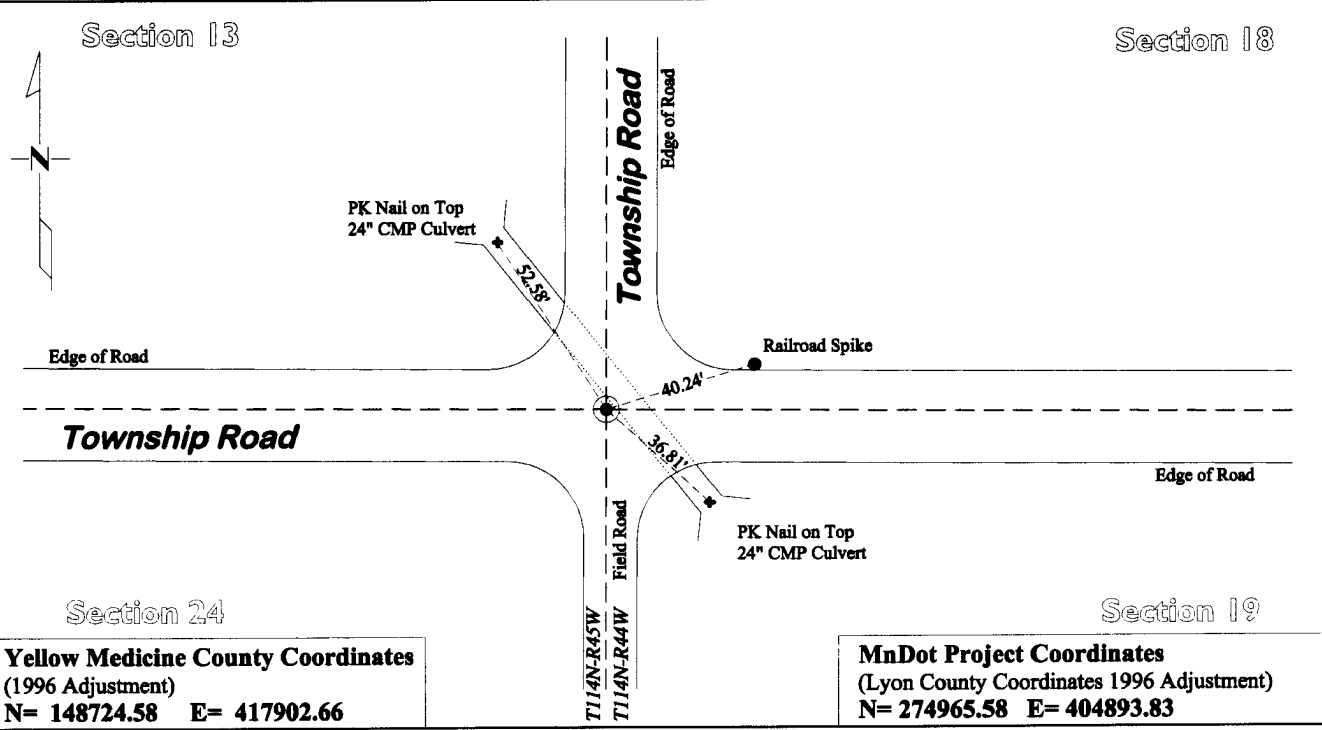
CERTIFICATE OF LOCATION OF GOVERNMENT CORNER

Northeast Corner of Section **24**, Township **114**, Range **45**

Fifth Principal Meridian, State of Minnesota, County of **Yellow Medicine**

At the corner location shown on the sketch:

- On May 23, 2012 found a 1 1/4" x 19 1/2" Iron Pipe 0.2' below the surface
DATE
- left monument as found lowered monument removed monument (explain)
- On July 7, 2012 placed a Cast Iron Capped 2" x 30" Telspar Monument at the location of the
DATE
found iron pipe



Statement of evidence for this corner location is on back of this page.

I hereby certify that this survey, plan, or report was prepared by me or under my direct supervision and that I am a duly Licensed Land Surveyor under the laws of the state of Minnesota.

Signature Debra Bland
Date May 6, 2013

Typed or Printed Name: Duane A. Bonnema
Reg. No. 14895

STATEMENT OF EVIDENCE

Northeast Corner Section 24, T114N-R45W

- 1858 W.J. Neely contracted by the United States Government Land Office to perform the Original Public Land Survey in this township. He records in his field notes, "Set post corner to sect 13, 18, 19 & 24 deposited coal made mound Trench & pits as per instruction".
- May 16, 1899 John Norgaard entered into a contract with the Yellow Medicine County Board for the "re-survey of all the section corners except the Township corners" in Yellow Medicine County. "The Monuments are Jasper Granite 2 feet long by 6 inches by 6 inches, all dimensions are given in feet." John Norgaard turned in his survey field notes to the Yellow Medicine County Recorder, who filed them as Doc No. 28417, on September 28, 1901. These field notes became the County Surveyor's Record Book "B".
- 1899-1901 John Norgaard, County Surveyor records in the County Surveyor's Record Book B, pages 39 & 41 that he measured to the corner while doing a re-survey of section corners across the county at the request of the Co. Board.
- 1899 - 1901 John Norgaard, County Surveyor records in the County Surveyors Record Book B Page 185, "Located in the center of road running East & West and on lines of improvements North & South. According to testimony of adjoining landowner the Government corner used to be at the same place. Set top of monument 2" above ground."
- July 21, 1914 The County Surveyor's Record Book page 330-331 contains a map entitled "Plat of County Road in Norman and Hammer, Yellow Medicine County." This map records the bearings and distances of a county road that extends from Porter to Canby, However the only dimension shown is the center quarter corner of Section 10, T114N R 45W.
- 1940 C.E. Lange, County Surveyor, records in the Yellow Medicine County Surveyor's Record Book, page 549, "found stone monument".
- 1940 The Yellow Medicine County Highway Department Corner Tie Book, Norman Township shows that 6 section corner witness ties were established for this corner but does not mention what type of monument they tied to.
- 1951 The Yellow Medicine County Highway Department Corner Tie Book, Norman Township notes, "Mon 18" deep", but does not mention what type of monument was found. They also established 2 section corner witness ties.
- 1951 The Yellow Medicine County Highway Department Corner Tie Book, Wergland Township notes, "stone 18" down - MHD", and records the same witness ties as were recorded in the Norman Township notes.
- 1951 MnDOT Alignments & Land Ties Book 2 page 2-7, notes "INP stone down 18" at INT of RDS N & S & E & W." and then notes the distance west to the highway center line (only 3' diff than current dimensions)
- 1951 MnDOT Alignments & Land Ties Book 2 page 2-9, shows the northeast corner of section 24, but does not mention what type of monument was found.
- Feb 1951 MnDOT Alignments & Land Ties Book 2 page 2-34, notes "Found stone down 18". It also notes "placed steel rod flush above stone".
- Nov 12, 2010 Daniel L. Bueltel R.L.S. 43844 prepared a Certificate of Location of Government Corner and states "Bueltel-Moseng Land Surveying found the irons at the northeast corner, the northeast corner of the south half of the southeast quarter, and the southeast corner of the North Half of the Northeast Quarter from the 1940 survey. We used these corners to set a 1" iron pipe with seal #43844, by projecting line and using the recorded distances. We did not dig at the corner because there is a 24" culvert running diagonally through road."
- July 30, 2012 Duane A. Bonnema Land Surveyor #14895, while doing a remonumentation survey for the Minnesota Department of Transportation, found a 1" iron pipe (Bueltel) at the road surface, a 5.2' deep hole was dug covering an area extending 2.0' northeasterly, 5.5' southeasterly, 2.5' southwesterly, and 7.0' northwesterly of the found 1" iron pipe. No evidence of section corner monumentation was found. The hole was dug lying parallel to and alongside of the 24" diameter corrugated metal culvert which crosses the center of the intersection. The culvert construction probably destroyed this stone found by MnDOT noted in 1951. The current 1/2 mile dimension lying to the north is within 3' of Norgaards 1900 era distance and the 1/2 mile dimension to the east is with 2' of Norgaard's dimension. A cast iron capped 2" square by 30" long iron telspar monument was placed at the surface at the position of the found Bueltel 1" iron pipe.