

Property & Public Services
 Property Records Division
 Yellow Medicine County, Minnesota
 I hereby certify that the within instrument
 was filed on May 7, 2013 at 11:40 AM

Janel Timm, Yellow Medicine County Recorder

By Debra Blood Deputy

N/C
 BONNEMA SURVEYS INC
 PROFESSIONAL LAND SURVEYING
 1809 22ND STREET SW SUITE 104
 WILLMAR MN 56201

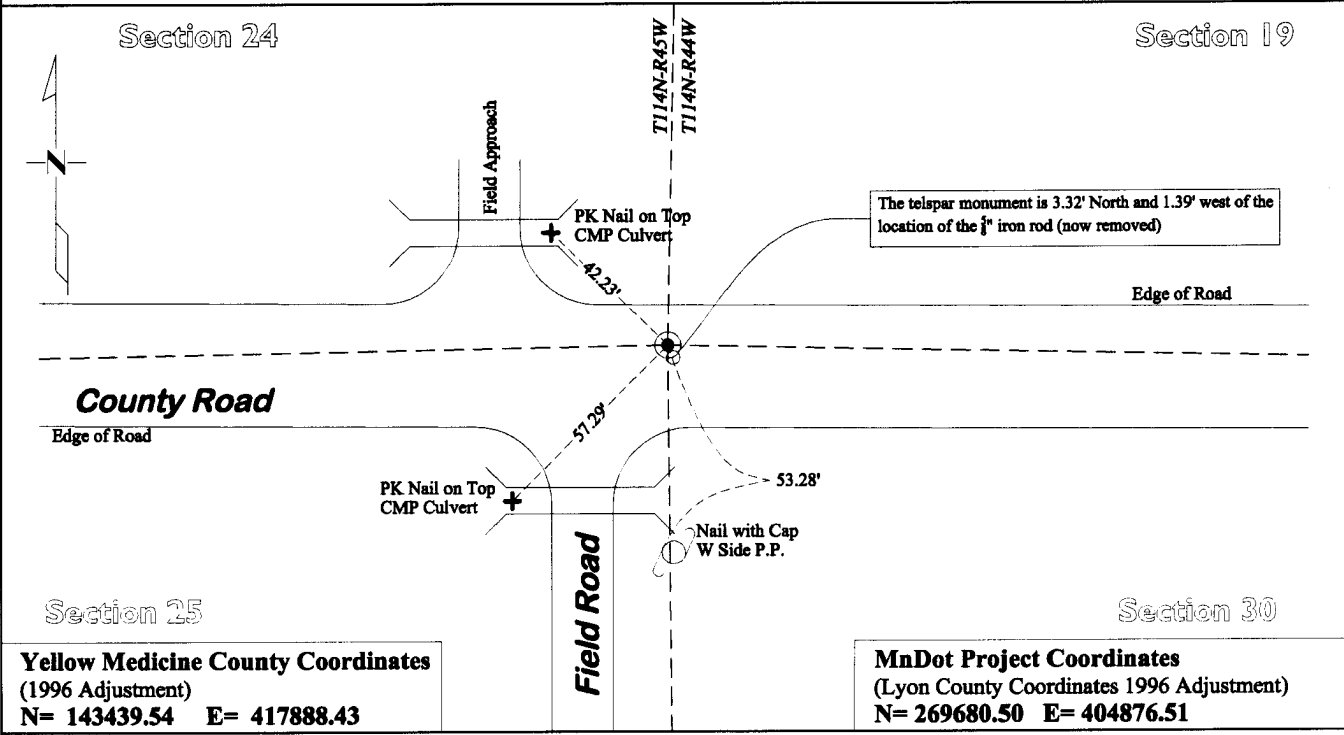
CERTIFICATE OF LOCATION OF GOVERNMENT CORNER

Northeast Corner of Section **25**, Township **114**, Range **45**

Fifth Principal Meridian, State of Minnesota, County of **Yellow Medicine**

At the corner location shown on the sketch:

- On May 16, 2012 found a 5/8" Iron Rod with unreadable survey cap at surface, a 7" x 7" x 10" Jasper
DATE stone with a cracked top and remnants of charred stake alongside, 2.75' below surface
- left monument as found lowered monument removed monument (explain)
- On Aug. 7, 2012 placed a Cast Iron Capped 2" x 30" Telspar Monument at the location of the jasper
DATE stone 1.4' West & 3.3' North of capped iron rod



Yellow Medicine County Coordinates
 (1996 Adjustment)
N= 143439.54 E= 417888.43

MnDot Project Coordinates
 (Lyon County Coordinates 1996 Adjustment)
N= 269680.50 E= 404876.51

Statement of evidence for this corner location is on back of this page.

I hereby certify that this survey, plan, or report was prepared by me or under my direct supervision and that I am a duly Licensed Land Surveyor under the laws of the state of Minnesota.

Signature *[Handwritten Signature]*
 Date May 16, 2013

Typed or Printed Name: Duane A. Bonnema
 Reg. No. 14895

STATEMENT OF EVIDENCE

Northeast Corner Section 25, T114N-R45W

- 1858 W.J. Neely was contracted by the United States Government Land Office to perform the Original Public Land Survey in this township. He records in his field notes, "Set post corner to sect 19, 24, 25 & 30 deposited coal made mound trench & pits as per instructions."
- May 16, 1899 John Norgaard entered into a contract with the Yellow Medicine County Board for the "re-survey of all the section corners except the Township corners" in Yellow Medicine County. "The Monuments are Jasper Granite 2 feet long by 6 inches by 6 inches, all dimensions are given in feet." John Norgaard turned in his survey field notes to the Yellow Medicine County Recorder, who filed them as Doc No. 28417, on September 28, 1901. These field notes became the County Surveyor's Record Book "B"
- 1899 - 1901 John Norgaard, County Surveyor, records in the County Survey Record Book B, pages 39 and 41 that he measured to the corner while doing a re-survey of section corners across the county at the request of the County Board.
- 1899 - 1901 John Norgaard, County Surveyor, records in the County Surveyor's Record Book B Page 185, "Found stake in the government mound, set top of monument 4" above ground."
- 1951 MnDOT Alignments & Land Ties Book 2, page 2-9, show the corner but do not mention what type of monument was found.
- 1951 MnDOT Alignments & Land Ties Book 2, page 2-10, records "Stone INP down 30" At INT of RD E & W and Fen N & S." they then show a distance of 1521' east to the Highway center line (this distance is within 4½' of current dimensions)
- 1951 MnDOT Alignments & Land Ties Book 2, page 2-35, "Found stone down 30" placed steel rod flush above stone."
- June 1952 MnDOT State Project No. 8709-02, Plan sheet no. 8 dimensions from the Highway 68 Center line to the Section Corner, but does not mention what type of monument was found.
- Oct 25, 1965 The Yellow Medicine County Highway Department Corner Tie Book, Wergeland Township notes "granite mon. 3" below the surface" and records 4 section corner witness ties.
- 1966 The Yellow Medicine County Highway Department Corner Tie Book, Norman Township, notes "Granite Mon. 3" deep" and records 7 section corner witness ties.
- July 19, 2012 Duane A. Bonnema, L.S. 14895, while doing a re-monumentation survey for the Minnesota Department of Transportation, found a 5/8" iron rod at the surface. A 4' deep hole was dug which covered an area extending 2.0' north, 7.0' south, 8.5' east, and 4.0' west, of the found 5/8" iron rod. The top of the original topsoil (sandy) was located at a depth of 3' below the surface. At a depth of 2.75 feet a 7"x7"x10" Red Granite Jasper Stone was found with remnants of charred oak stake alongside the stone. Norgaards standard monument was 24" long, however he did use irregular monuments at the quarter corners. The 7"x7" red granite jasper stone was found 3.32' north and 1.39' west of the location of the found 5/8" iron rod. A cast iron capped 2" square by 30" long iron telspar monument was placed at the surface at the position of the found 7"x7" red granite jasper stone. The half mile dimension to the south is within a foot of the Norgaard 1900 era distance. The mile to the east dimension is within 4 feet of the Norgaard distance.