

Property & Public Services  
Property Records Division  
Yellow Medicine County, Minnesota  
I hereby certify that the within instrument  
was filed on May 13, 2013 at 9:30 AM

Janel Timm, Yellow Medicine County Recorder

By Dolores Blood Deputy

N/C  
BONNEMA SURVEYS INC  
PROFESSIONAL LAND SURVEYING  
1809 22ND STREET SW SUITE 104  
WILLMAR MN 56201

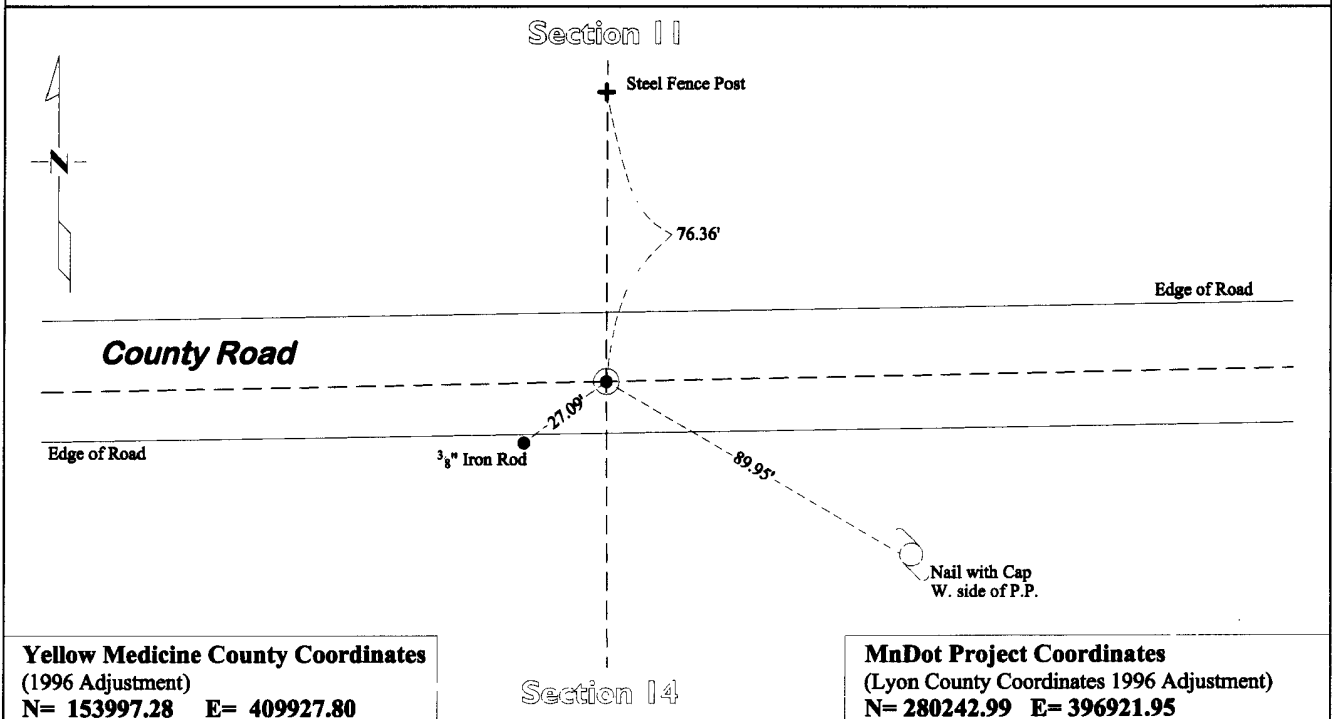
### CERTIFICATE OF LOCATION OF GOVERNMENT CORNER

**North Quarter** Corner of Section **14**, Township **114**, Range **45**

**Fifth** Principal Meridian, State of Minnesota, County of **Yellow Medicine**

At the corner location shown on the sketch:

- On July 18, 2012 found a 11" Spike at the surface and a 1 1/2" iron machinery part with an oak stake  
DATE along side 3.0' below the surface
- left monument as found       lowered monument       removed monument (explain)
- On Dec. 12, 2012 placed a Cast Iron Capped 2" x 30" Telspar Monument at the location of the spike,  
DATE machinery part, and oak stake



**Yellow Medicine County Coordinates**  
(1996 Adjustment)  
N= 153997.28 E= 409927.80

**MnDot Project Coordinates**  
(Lyon County Coordinates 1996 Adjustment)  
N= 280242.99 E= 396921.95

Statement of evidence for this corner location is on back of this page.

I hereby certify that this survey, plan, or report was prepared by me or under my direct supervision and that I am a duly Licensed Land Surveyor under the laws of the state of Minnesota.

Signature [Signature]  
Date 5/10/13

Typed or Printed Name: Joshua M. Stern  
Reg. No. 46169

# **STATEMENT OF EVIDENCE**

---

## **North Quarter Corner Section 14, T114N-R45W**

- 1871 L. Harrington was contracted by the United States Government Land Office to perform the Original Public Land Survey in this township. He records in his field notes, "Set a post for 1/4 sec cor. raised mound as per instructions."
- 1951 The MnDOT Alignments & Land Ties Book 2 Pg 2-4 records "1/4 cor assumed to be at INT. of RD. E&W and fence N & S."
- June 1952 MnDOT State Project No. 8709-02, Plan sheet no. 6 shows this corner. but does not mention what type of monument was found.
- July 18, 2012 Joshua M. Stern, LS 46169, while doing a re-monumentation survey for the Minnesota Department of Transportation, dug a 3.2' deep hole which covered an area extending 3.5' north, 2.0' south, 2.0' east, and 7.0' west, of this corner location. The top of the original topsoil was observed at a depth of 1.0' below the surface. At a depth of 3' a 1.5" diameter iron machinery part was found. The machinery part had an oak stake lying on the east edge of it. The stake appeared to have a charred coating. The charred oak stake is evidently the "post for 1/4 Sec. Cor" as recorded by L. Harrington's 1871 survey. A cast iron capped 2" square by 30" long iron telspar monument was placed at the surface at the position of the found charred oak stake.