

Index No.

Statement of evidence relative to this corner location is on back of page.

I hereby certify that this document and the data contained herein was prepared by me or under my direct supervision.

Peter W. Blethen 7/17/13
Peter W. Blethen DATE

Registration No. 17367

Land surveyor County Surveyor

Doc# 258186 Fee: \$0.00 2 Pages

Property & Public Services
Property Records Division
Yellow Medicine County, Minnesota
I hereby certify that the within instrument was filed on July 18, 2013 at 9:30 AM

Janel Timm, Yellow Medicine County Recorder

By Kelly Kruger Deputy

CERTIFICATE OF LOCATION OF GOVERNMENT CORNER

WEST QUARTER Corner of Section 12, Township T115N, Range R40W, 5th P.M.

STATE OF MINNESOTA, County of YELLOW MEDICINE

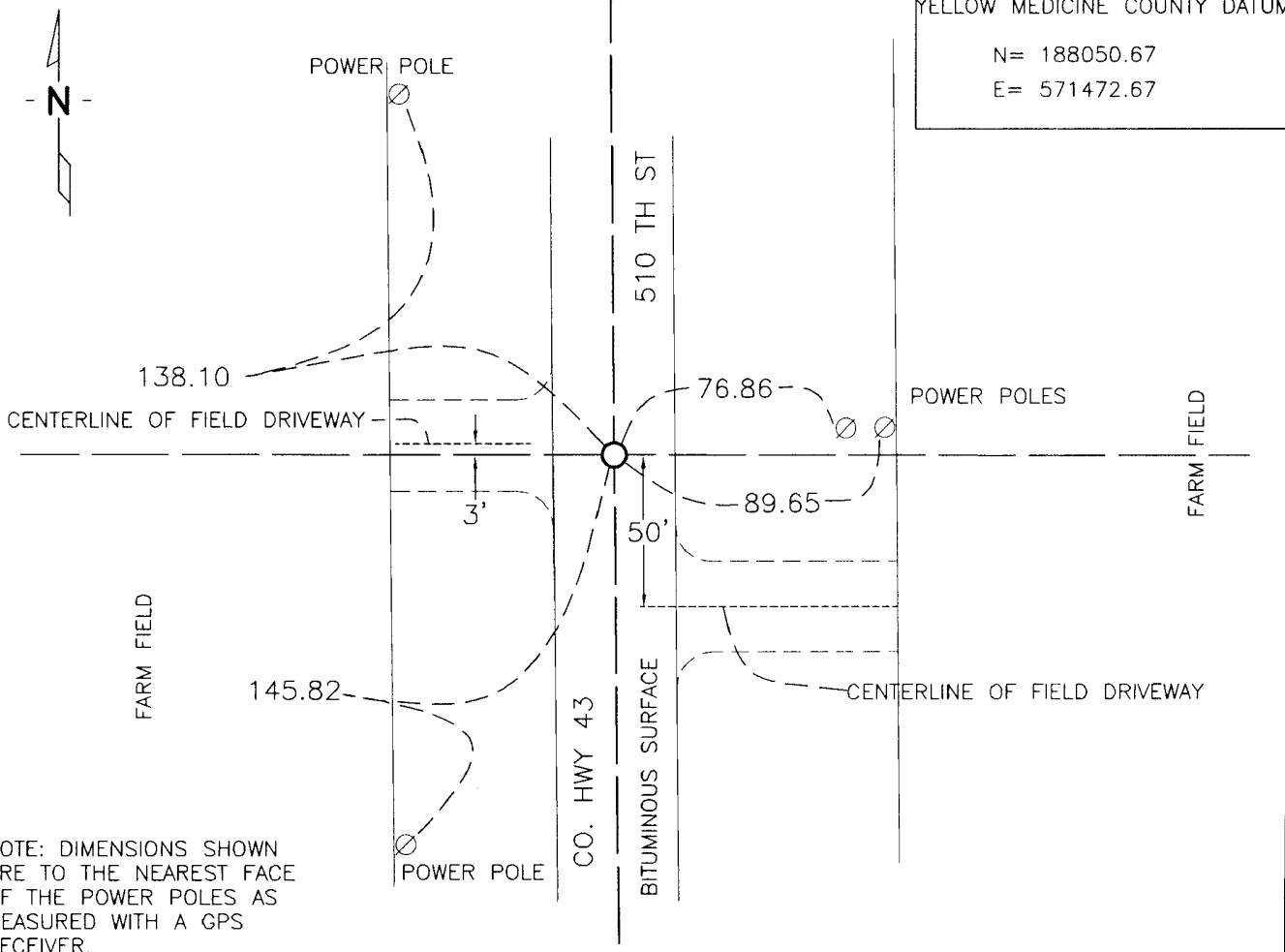
At the corner location shown on the sketch:

On _____ found a _____
DATE

left monument as found, lowered monument, removed monument (explain)

On 4-16-13 placed a MAG NAIL
DATE

SKETCH OF REFERENCE TIES



NAD83 (1996 ADJUSTMENT)
YELLOW MEDICINE COUNTY DATUM
N= 188050.67
E= 571472.67

NOTE: DIMENSIONS SHOWN ARE TO THE NEAREST FACE OF THE POWER POLES AS MEASURED WITH A GPS RECEIVER.

Statement of Evidence:

- 1864 - Original Government Survey by Davis & Webb. Set a "post in mound with pits".
- date unknown - County Surveyors Record Book, page 13, shows dimensions north and south from this corner, however makes no reference to a monument. Dimensions shown are proportional to the those of the original government survey.
- April 16, 2013 - Found no monument at the location, so set a Mag Nail in the paved road at distances proportional to those recorded on the original government plat and the survey recorded on Page 13 referenced above.

N/C: Bolton + Menk, Inc.
Ret. 2040 Highway 12 East
Willmar, MN 56201-5818