

Statement of evidence relative to this corner location is on back of page.

I hereby certify that this document and the data contained herein was prepared by me or under my direct supervision.

Peter W. Blethen  
Peter W. Blethen

7/17/13  
DATE

Registration No. 17367

Land surveyor       County Surveyor

Doc# 258187 Fee: \$0.00 2 Pages

Property & Public Services  
Property Records Division  
Yellow Medicine County, Minnesota  
I hereby certify that the within instrument was filed on July 18, 2013 at 9:35 AM

Janel Timm, Yellow Medicine County Recorder

By Kelly Kruger Deputy

# CERTIFICATE OF LOCATION OF GOVERNMENT CORNER

SOUTHWEST Corner of Section 12, Township T115N, Range R40W, 5th P.M.

STATE OF MINNESOTA, County of YELLOW MEDICINE

At the corner location shown on the sketch:

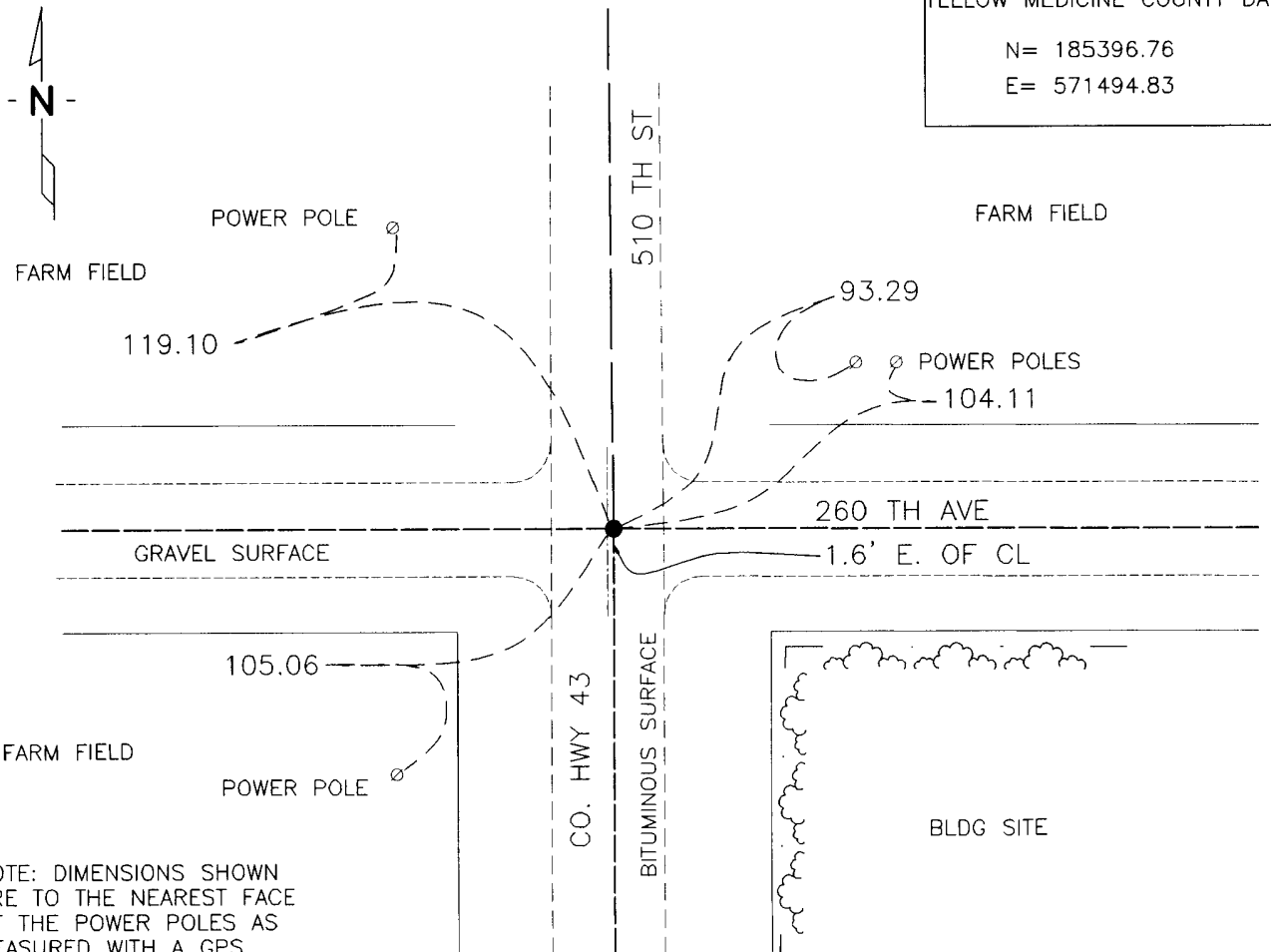
On 4/13/13 found a 3/4" IRON ROD 9" BELOW THE SURFACE  
DATE

left monument as found,  lowered monument,  removed monument (explain)

On \_\_\_\_\_ placed a \_\_\_\_\_  
DATE

## SKETCH OF REFERENCE TIES

NAD83 (1996 ADJUSTMENT)  
YELLOW MEDICINE COUNTY DATUM  
N= 185396.76  
E= 571494.83



NOTE: DIMENSIONS SHOWN ARE TO THE NEAREST FACE OF THE POWER POLES AS MEASURED WITH A GPS RECEIVER.

Statement of Evidence:

- 1864 - Original Government Survey by Davis and Webb. Set a "post in mound with pits".
- date unknown - County Surveyors Record Book, page 13, records a dimension from this corner, however makes no reference to a monument.
- April 13, 2013 - Bolton and Menk survey crew found a  $\frac{3}{4}$ " iron rod near the intersection of the road centerlines. Although the origin of this rod is not known, it appears to mark the location of the original corner as evidenced by measurements to surrounding monuments and occupation evidence.

N/c: Bolton + Menk, Inc.  
Ret. 2040 Highway 12 East  
Willmar, MN 56201-5818