

Index No.

Statement of evidence relative to this corner location is on back of page.

I hereby certify that this document and the data contained herein was prepared by me or under my direct supervision.

Peter W. Blethen 7/17/13
Peter W. Blethen DATE

Registration No. 17367

Land surveyor County Surveyor

Doc# 258188 Fee: \$0.00 2 Pages

Property & Public Services
Property Records Division
Yellow Medicine County, Minnesota
I hereby certify that the within instrument was filed on July 18, 2013 at 9:40 AM

Janel Timm, Yellow Medicine County Recorder

By Kelly Kueger Deputy

CERTIFICATE OF LOCATION OF GOVERNMENT CORNER

E 1/4 Corner of Section 12, Township T115N, Range R40W, 5th P.M.

STATE OF MINNESOTA, County of YELLOW MEDICINE

At the corner location shown on the sketch:

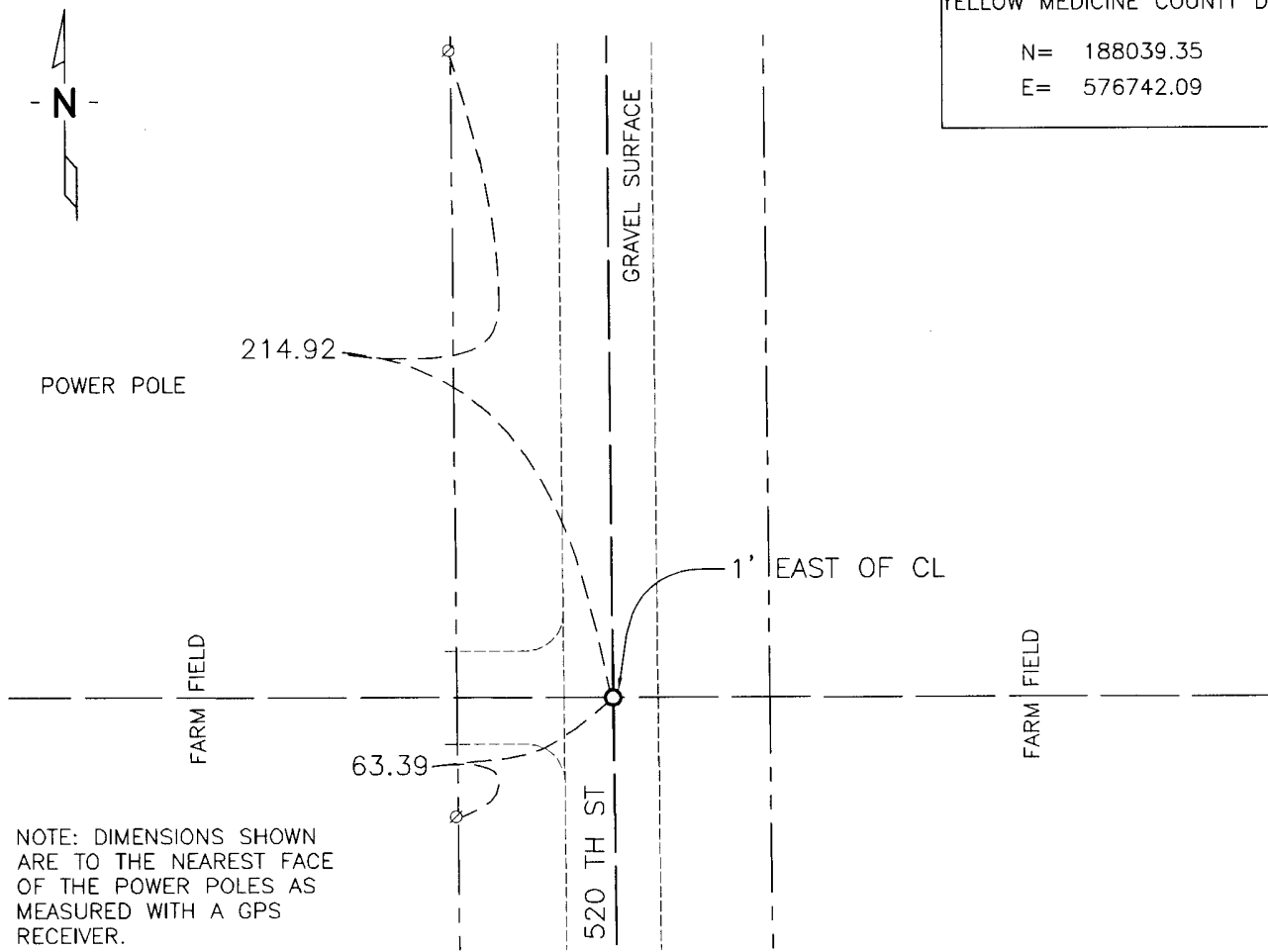
On _____ found a _____
DATE

left monument as found, lowered monument, removed monument (explain)

On 4/16/13 placed a 3/4" IRON PIPE WITH RLS CAP #17367 INSERTED, 0.7'
DATE
BELOW THE ROAD SURFACE.

SKETCH OF REFERENCE TIES

NAD83 (1996 ADJUSTMENT)
YELLOW MEDICINE COUNTY DATUM
N= 188039.35
E= 576742.09



NOTE: DIMENSIONS SHOWN ARE TO THE NEAREST FACE OF THE POWER POLES AS MEASURED WITH A GPS RECEIVER.

Statement of Evidence:

- 1864 - Original Government Survey by W. J. Neely. Set a post in mound with pits.
- April 5, 1892 - County Surveyor Jonah Peterman records in the County Surveyors Record Book, page 57, a dimension from the "Old Corner".
- April 13, 2013 - Bolton and Menk survey crew found no monument at this corner. Placed a $\frac{3}{4}$ " iron pipe with RLS survey cap #17367 inserted, 0.7' below the road surface, at distances proportional to original government survey.

N/c: Bolton + Menk Inc.
Ret. 2040 Highway 12 East
Willmar, MN 56201-5818