

Index No.

Statement of evidence relative to this corner location is on back of page.

I hereby certify that this document and the data contained herein was prepared by me or under my direct supervision.

*Peter W. Blethen*  
Peter W. Blethen

7/17/13  
DATE

Registration No. 17367

Land surveyor       County Surveyor

Doc# 258190 Fee: \$0.00 2 Pages

Property & Public Services  
Property Records Division  
Yellow Medicine County, Minnesota  
I hereby certify that the within instrument was filed on July 18, 2013 at 9:50 AM

Janel Timm, Yellow Medicine County Recorder

By *Kelly Kruger* Deputy

# CERTIFICATE OF LOCATION OF GOVERNMENT CORNER

S 1/4 Corner of Section 12, Township T115N, Range R40W, 5th P.M.

STATE OF MINNESOTA, County of YELLOW MEDICINE

At the corner location shown on the sketch:

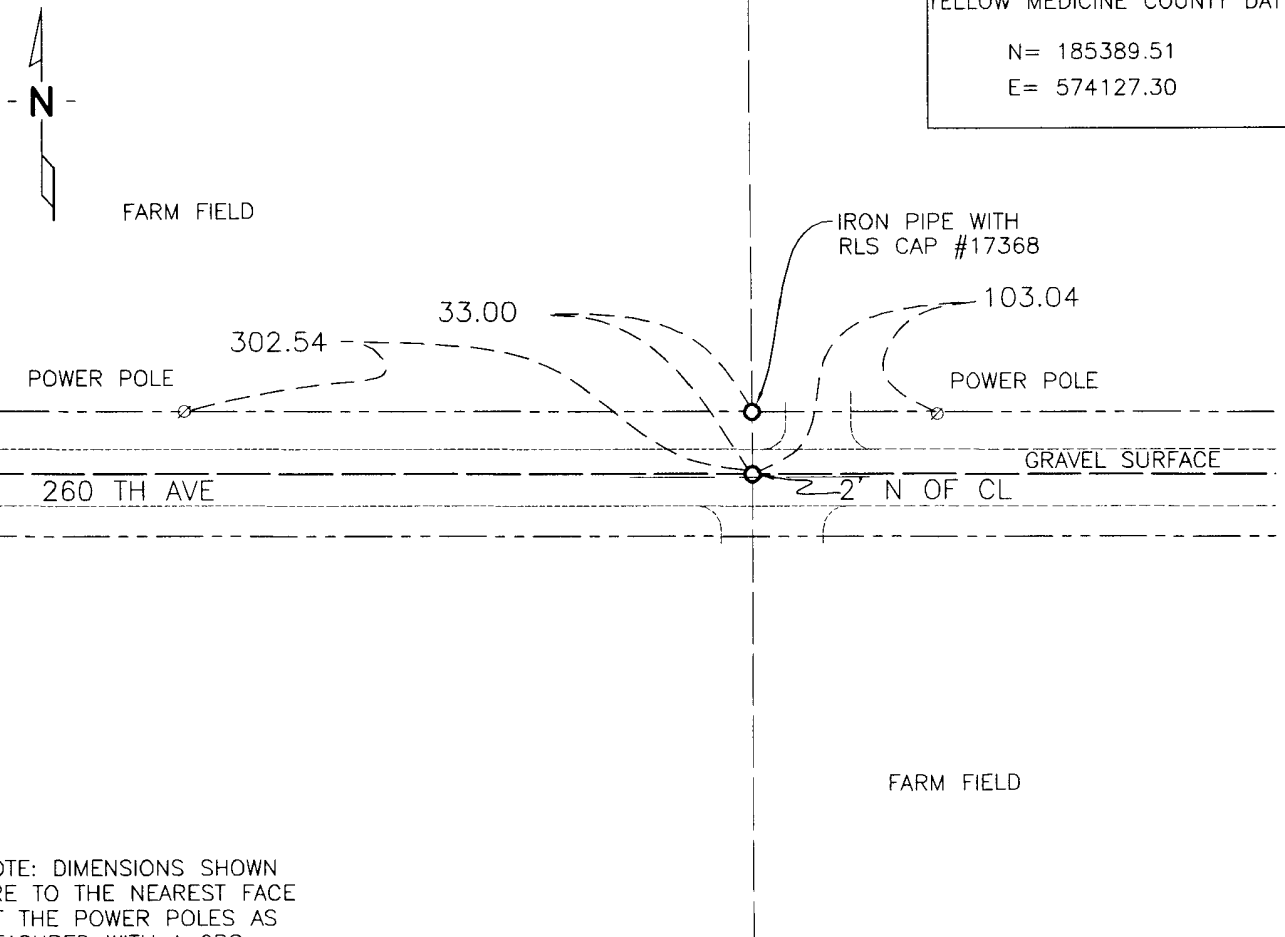
On \_\_\_\_\_ found a \_\_\_\_\_  
DATE

left monument as found,  lowered monument,  removed monument (explain)

On 4/16/13 placed a 3/4" IRON PIPE WITH RLS CAP # 17367 INSERTED, 0.3'  
DATE  
BELOW THE ROAD SURFACE

## SKETCH OF REFERENCE TIES

NAD83 (1996 ADJUSTMENT)  
YELLOW MEDICINE COUNTY DATUM  
N= 185389.51  
E= 574127.30



NOTE: DIMENSIONS SHOWN ARE TO THE NEAREST FACE OF THE POWER POLES AS MEASURED WITH A GPS RECEIVER.

Statement of Evidence:

- 1864 - Original Government Survey by Davis and Webb. Set a "post in mound with pits".
- April 13, 2013 - Bolton and Menk survey crew found no monument at this corner. Placed a  $\frac{3}{4}$ " iron pipe with RLS survey cap #17367 inserted, 0.3' below the road surface, at distances proportional to original government survey. This position is supported by occupation evidence.

N/C: Bolton + Menk, Inc.  
Ret. 2040 Highway 12 East  
Willmar, MN 56201-5818