

# CERTIFICATE OF LOCATION OF GOVERNMENT CORNER

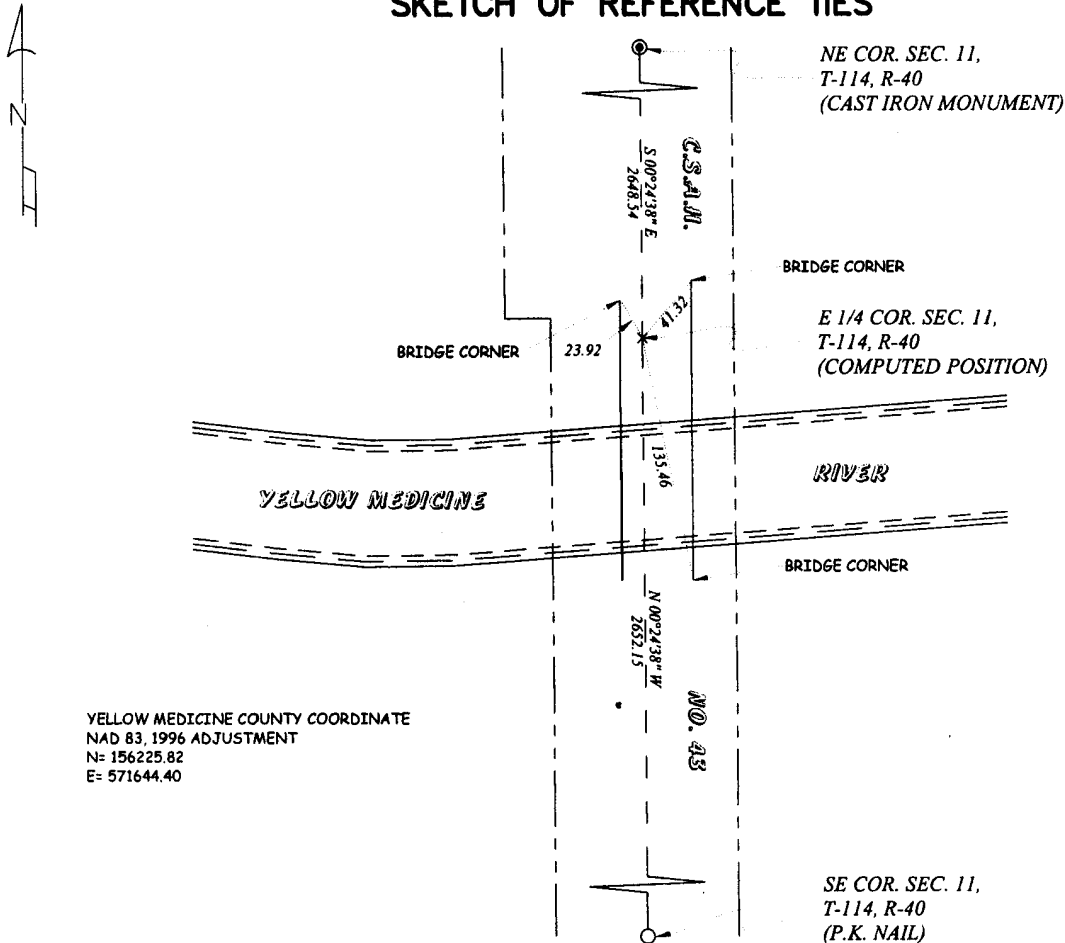
EAST QUARTER Corner of Section 11, Township 114 N, Range 40 W, 5TH P.M.

STATE OF MINNESOTA, County of YELLOW MEDICINE

At the corner location shown on the sketch:

- On \_\_\_\_\_ found a \_\_\_\_\_  
Date \_\_\_\_\_
- left monument as found,  lowered monument,  removed monument (explain)
- On 12-23-2013 placed a COMPUTED COUNTY COORDINATE  
Date \_\_\_\_\_

## SKETCH OF REFERENCE TIES



Statement of evidence relative to this corner location is on back of page.

I hereby certify that this document and the data contained herein was prepared by me or under my direct supervision.

[Signature]  
Signature

12-23-2013  
Date

Registration No. 42300

- Land Surveyor  Professional Engineer
- County Surveyor  County Engineer

### OFFICE OF THE COUNTY RECORDER

County of YELLOW MEDICINE

I hereby certify that this document was filed in the County Recorders office at \_\_\_\_\_ o'clock \_\_\_\_ M. on the \_\_\_\_\_ day of \_\_\_\_\_, 20\_\_\_\_

County Recorder \_\_\_\_\_

Documnet Number \_\_\_\_\_

**Statement of Evidence:**

**East Quarter Corner of Section 11, Township 114 North, Range 40 West, Sandnes Township, Yellow Medicine County, Minnesota.**

The original Public Land Survey was run in 1864 and a wood post was set in a mound with pits to mark the corner.

September 1st, 1884 N.S. Dawly platted the Town of Hanley Falls. He shows a distance of 2644.5 feet from the Southeast Corner of Section 11 to the East Quarter corner of Section 11.

April 29, 1892 a survey was performed by Jonah Peterman, County Surveyor. He showed a distance of 40.14 chains to the Northeast corner of Section 11 and a distance of 40.20 chains to the Southeast corner of Section 11.

Minnesota Department of Transportation right of way plat for State Highway 23 shows distance of 2645.5 feet to the Northeast corner of Section 11 and distance of 2649.1 feet to the Southeast corner of Section 11.

February 26, 1974 Minnesota Department of Transportation Surveyed Section 12, Township 114, Range 40 as part of a right of way plat for the re-alignment of State Highway 23. The section breakdown shows a monument at the Southeast corner of Section 11 and at the Northeast corner of Section 11. The break down shows a computed point at the East Quarter corner of Section 11 being at a line and split between the Southeast and Northeast corners of Section 11.

December 23, 2013 Benjamin C. O'Malley performed a survey in Section 11, Township 114, Range 40 and found a Cast Iron Monument at the Northeast Corner of Section 11 and at the South Quarter corner of Section 12. Using the measurements from the Minnesota Department of Transportation Section breakdown of Section 12 I established the Southeast corner of Section 11. The position fit with corner record filed by Jesse Fant on December 4, 1973 and a p.k. nail was set. The over all distance from the Southeast corner to the Northeast corner of Section 11 is 5300.69 feet. I determined that the East Quarter corner of Section 11 should be set at a proportional distance using the distances on the Right of Way map and not at a lost position. This position also fits well with a proportional distance using Petermans Survey. The corner falls in a bridge over the Yellow Medicine River. No monument was set but ties to the bridge corners were taken.

Doc# 259241 Fee: \$0.00 2 Pages

Property & Public Services  
Property Records Division  
Yellow Medicine County, Minnesota

I hereby certify that the within instrument  
was filed on December 27, 2013 at 9:40 AM

Janel Timm, Yellow Medicine County Recorder

By Kelly Kauger Deputy