

Property & Public Services
Property Records Division
Yellow Medicine County, Minnesota
I hereby certify that the within instrument
was filed on January 7, 2014 at 9:30 AM

Janel Timm, Yellow Medicine County Recorder

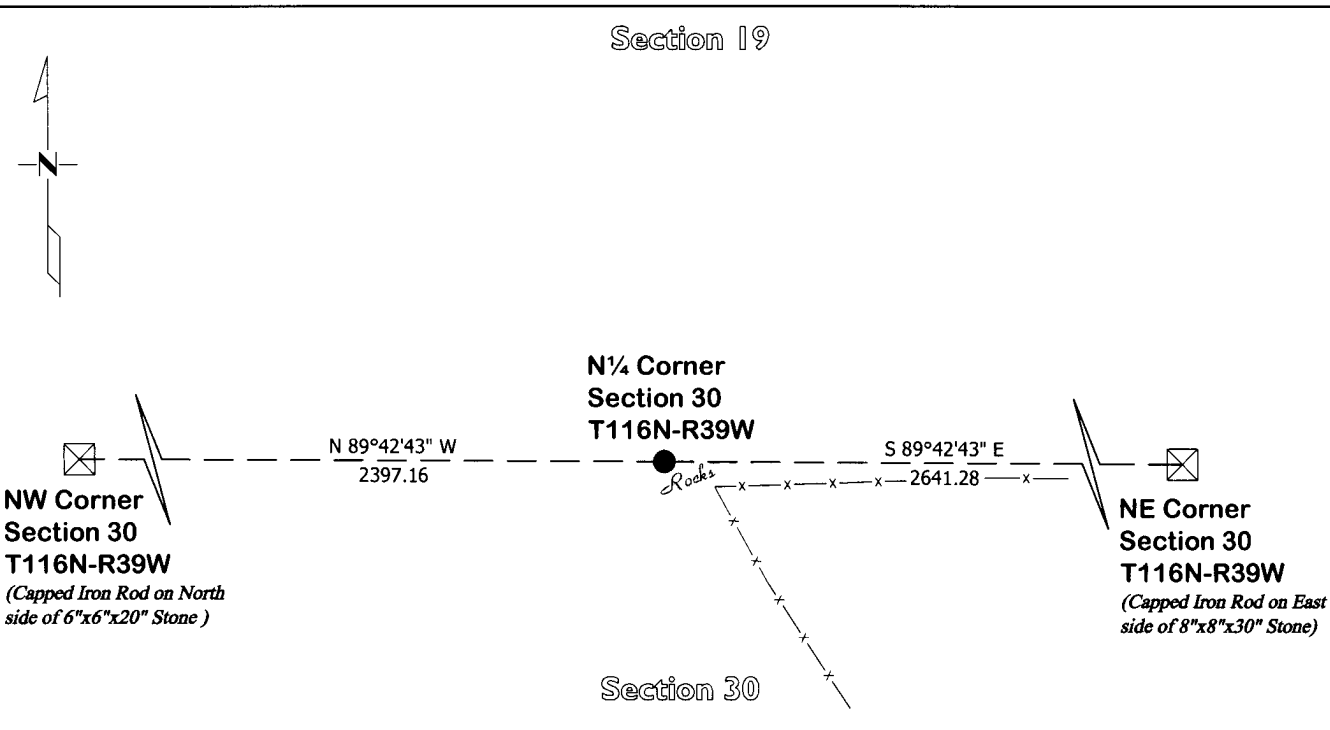
By Kelly Kauger Deputy

CERTIFICATE OF LOCATION OF GOVERNMENT CORNER

North Quarter Corner of Section 30, Township 116, Range 39
Fifth Principal Meridian, State of Minnesota, County of Yellow Medicine

At the corner location shown on the sketch:

- On Aug. 21, 2013 found Metal under large rock
DATE
- left monument as found lowered monument removed monument (explain)
- On Nov. 26, 2013 placed an Iron Rod with a "46169 46171" stamped plastic cap, Hammerdrilled into the
DATE stone over the metal reading



Statement of evidence for this corner location is on back of this page.

I hereby certify that this survey, plan, or report was prepared by me or under my direct supervision and that I am a duly Licensed Land Surveyor under the laws of the state of Minnesota.

Signature Matthew D. Runke
Date 11/2/14

Typed or Printed Name: Matthew D. Runke
Reg. No. 46171

STATEMENT OF EVIDENCE

North Quarter Corner Section 30, T116N-R39W

- 1865 Davis & Webb were contracted by the United States Government Land Office to perform the Original Public Land Survey in this township. They record in their field notes, "Set a post for 1/4 section corner in mound & pits as per instructions"
- 1919 John Norgaard, County Surveyor, records in the County Surveyor's Record Book, page 417, dimensions to this corner position but doesn't mention what type of monument was found.
- Nov. 11, 1931 John Norgaard, County Surveyor, records in the County Surveyor's Record Book, page 538, dimensions to this corner position but doesn't mention what type of monument was found.
- 1961 Minnesota Department of Transportation Highway Right of Way Map No. 3-62A, notes a "wood stake in p." and dimensions from the highway center line to this corner position.
- March 19, 1998 Duane A. Bonnema, LS 14895, performed a survey in this section, but does not mention what type of monument was found at this corner position.
- Unknown Dates Roy Manhart, LS 19092, performed surveys in this section, but does not mention what type of monument was found at this corner position.
- Nov. 13, 2012 Matthew D. Runke, LS 46171, searched with a metal locator and found a strong metal reading under large stone at ground level. The location was in a rock pile and we were unable to remove or dig around the large stone to see what the metal reading was. The metal & large stone fit within 1.3' of the 1919 and 1931 Norgaard survey dimensions from the found stones at the northeast and northwest corner of this section. This position also fits well with the 1961 MNDOT dimensions to the center line of the Highway. The strong metal reading under a large stone appears to be the best evidence of the location of this corner position and an Iron Rod with a "46169 46171" stamped plastic cap was hammer drilled into the top of the stone over the metal reading.