

Doc# 259305 Fee: \$0.00 2 Pages  
 Property & Public Services  
 Property Records Division  
 Yellow Medicine County, Minnesota  
 I hereby certify that the within instrument  
 was filed on January 7, 2014 at 9:35 AM

Janel Timm, Yellow Medicine County Recorder

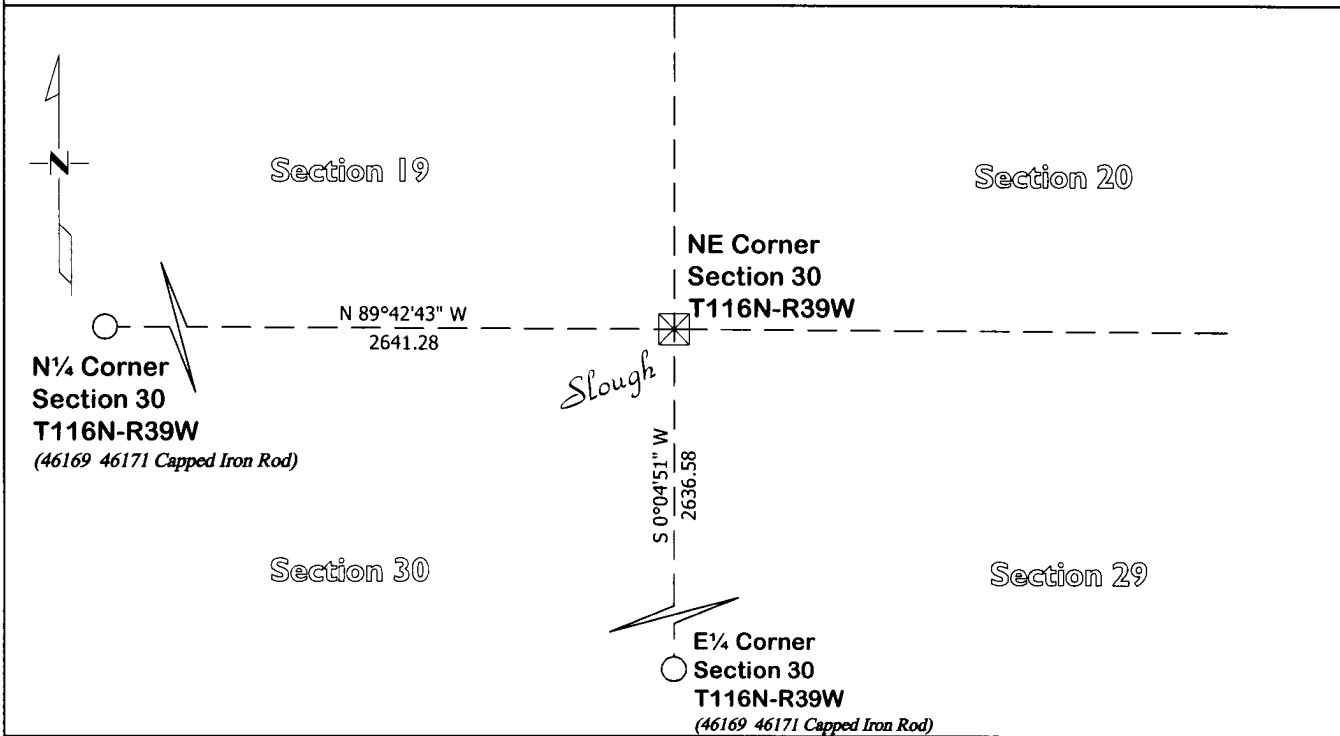
By Kelly Kuger Deputy

## CERTIFICATE OF LOCATION OF GOVERNMENT CORNER

Northeast Corner of Section 30, Township 116, Range 39  
Fifth Principal Meridian, State of Minnesota, County of Yellow Medicine

At the corner location shown on the sketch:

- On Aug. 21, 2013 found 8" x 8" x 30" Square Cut Stone lying flat in a slough  
DATE
- left monument as found       lowered monument       removed monument (explain)
- On Nov. 26, 2013 placed an Iron Rod with a "46169 46171" stamped plastic cap on the east side of the  
DATE 8" x 8" x 30" Stone



Statement of evidence for this corner location is on back of this page.

I hereby certify that this survey, plan, or report was prepared by me or under my direct supervision and that I am a duly Licensed Land Surveyor under the laws of the state of Minnesota.

Signature Matthew Runke      Typed or Printed Name: Matthew D. Runke  
 Date 1/2/14      Reg. No. 46171

# **STATEMENT OF EVIDENCE**

## **Northeast Corner Section 30, T116N-R39W**

- 1865 Davis & Webb were contracted by the United States Government Land Office to perform the Original Public Land Survey in this township. They record in their field notes, "Set a post for corner to section 19, 20, 29 & 30 in mound with pits as per instructions"
- 1915 John Norgaard, County Surveyor, records in the County Surveyor's Record Book, page 352, dimensions to this corner position but doesn't mention what type of monument was found.
- 1919 John Norgaard, County Surveyor, records in the County Surveyor's Record Book, page 417, dimensions to this corner position but doesn't mention what type of monument was found.
- Nov. 11, 1931 John Norgaard, County Surveyor, records in the County Surveyor's Record Book, page 538, dimensions to this corner position but doesn't mention what type of monument was found.
- Nov. 13, 2012 Matthew D. Runke, LS 46171, searched with a metal locator and did not find any existing monumentation at the corner position. Runke then probed an area extending 4.0' North, 4.0' East, 4.0' South, and 2.0' West of a position developed by using the 1919 & 1931 survey dimensions and found monuments along the north line of this section. An 8"x8"x30" square cut stone was found, lying flat just below the slough bottom. This stone is typical of the type of monument John Norgaard would have placed to perpetuate section corner positions, and was apparently set in 1919 as part of his survey. This stone fits well with the 1919 & 1931 Norgaard survey dimensions along the north line of this section. The 8"x8"x30" square cut stone appears to be the best evidence of the location of this corner position. An Iron Rod with a "46169 46171" stamped plastic cap was set along the east side of the stone, which was the bottom side of the stone.