

Property & Public Services
Property Records Division
Yellow Medicine County, Minnesota
I hereby certify that the within instrument
was filed on January 7, 2014 at 9:40 AM

Janel Timm, Yellow Medicine County Recorder

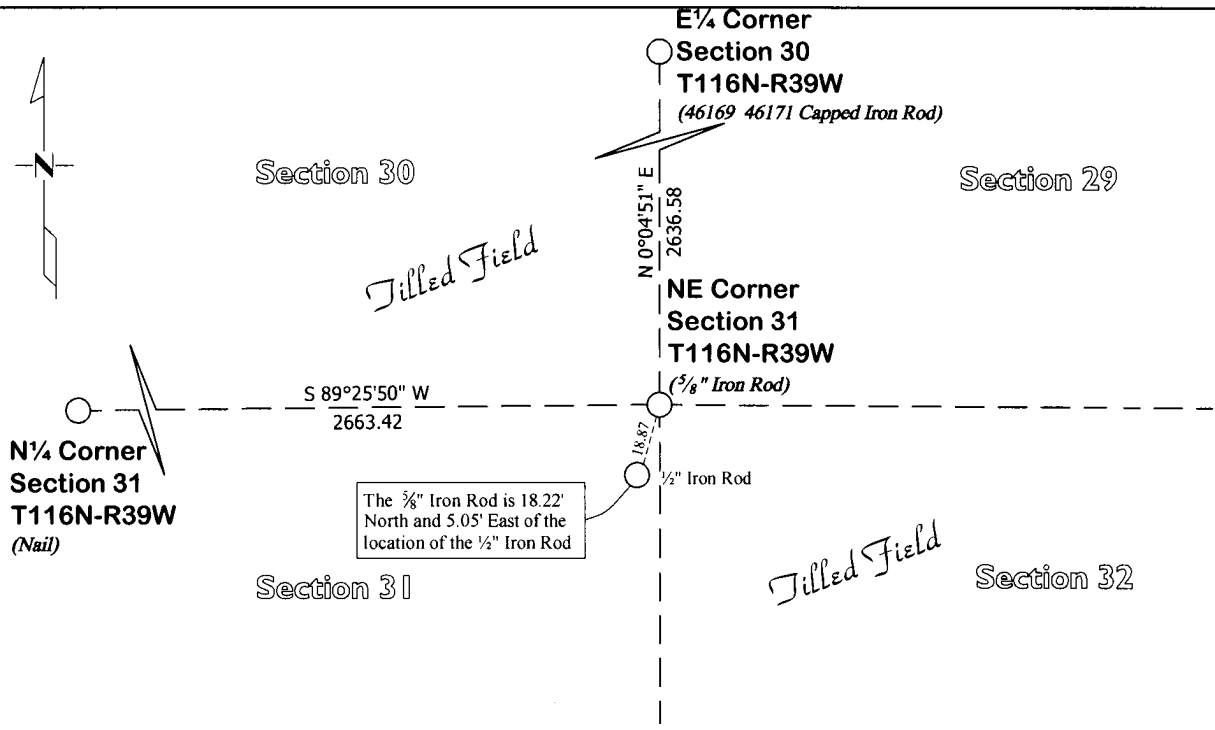
By Kelly Kauger Deputy

CERTIFICATE OF LOCATION OF GOVERNMENT CORNER

Northeast Corner of Section 31, Township 116, Range 39
Fifth Principal Meridian, State of Minnesota, County of Yellow Medicine

At the corner location shown on the sketch:

- On June 27, 2013 found a 5/8" Iron Rod and a 1/2" Iron Rod
DATE
- left monument as found lowered monument removed monument (explain)
- On _____ placed an _____
DATE



Statement of evidence for this corner location is on back of this page.

I hereby certify that this survey, plan, or report was prepared by me or under my direct supervision and that I am a duly Licensed Land Surveyor under the laws of the state of Minnesota.

Signature Matthew D. Runke
Date 1/3/14

Typed or Printed Name: Matthew D. Runke
Reg. No. 46171

STATEMENT OF EVIDENCE

Northeast Corner Section 31, T116N-R39W

- 1865 Davis & Webb were contracted by the United States Government Land Office to perform the Original Public Land Survey in this township. They record in their field notes, "Set a post for corner to Sections 29, 30, 31 & 32, in mound with pits as per instructions. Bottom of bluffs and enter river bottom."
- Jan. 1892 County Surveyor's Record Book, page 62, notes they found the "old government corner" and dimensions to this corner position.
- Nov. 1912 John Norgaard, County Surveyor, records in the County Surveyor's Record Book, page 278, "found jasper stone monument set by me several years ago" and dimensions to this corner position.
- 1915 John Norgaard, County Surveyor, records in the County Surveyor's Record Book, page 352, dimensions to this corner position but doesn't mention what type of monument was found.
- June 1918 John Norgaard, County Surveyor, records in the County Surveyor's Record Book, page 409, dimensions to this corner position but doesn't mention what type of monument was found.
- April 1931 John Norgaard, County Surveyor, records in the County Surveyor's Record Book, page 277, "found jasper stone monument set by me 13 years ago" and dimensions to this corner position.
- Nov. 11, 1931 John Norgaard, County Surveyor, records in the County Surveyor's Record Book, page 538, dimensions to this corner position but doesn't mention what type of monument was found.
- 1961 Minnesota Department of Transportation Highway Right of Way Map No. 3-62A, dimensions to this corner position but does not mention what type of monument was found.
- Unknown Dates Roy Manhart, LS 19092, while doing surveys in Sections 30, 31, and 32 notes "found corner monument" and dimensions to this corner position.
- Nov. 13, 2012 Matthew D. Runke, LS 46171, searched with a metal locator and found a 5/8" iron rod 1.5' deep at this corner position. He also found a 1/2" Iron Rod 18.22' south and 5.05' West of this corner position. Runke then probed an area extending 2.0' North, 2.0' South, 2.0' East and 2.0' West of each Iron Rod and did not find the Norgaard Jasper stone as called for. These Iron Rods land in a tilled field and it appears the stone has been destroyed by the farm tillage. The found 1/2" Iron Rod was used by Manhart for the surveys he performed in Sections 30, 31, & 32. There is no record of when the 5/8" Iron rod was set, but it fits very well with all of the County Survey Record dimensions, recorded on surveys done between 1892 & 1931. It appears that the 5/8" Iron Rod, is the best evidence as to the location of the section corner, and was left as found.