

Property & Public Services
Property Records Division
Yellow Medicine County, Minnesota
I hereby certify that the within instrument
was filed on January 7, 2014 at 9:50 AM

Janel Timm, Yellow Medicine County Recorder

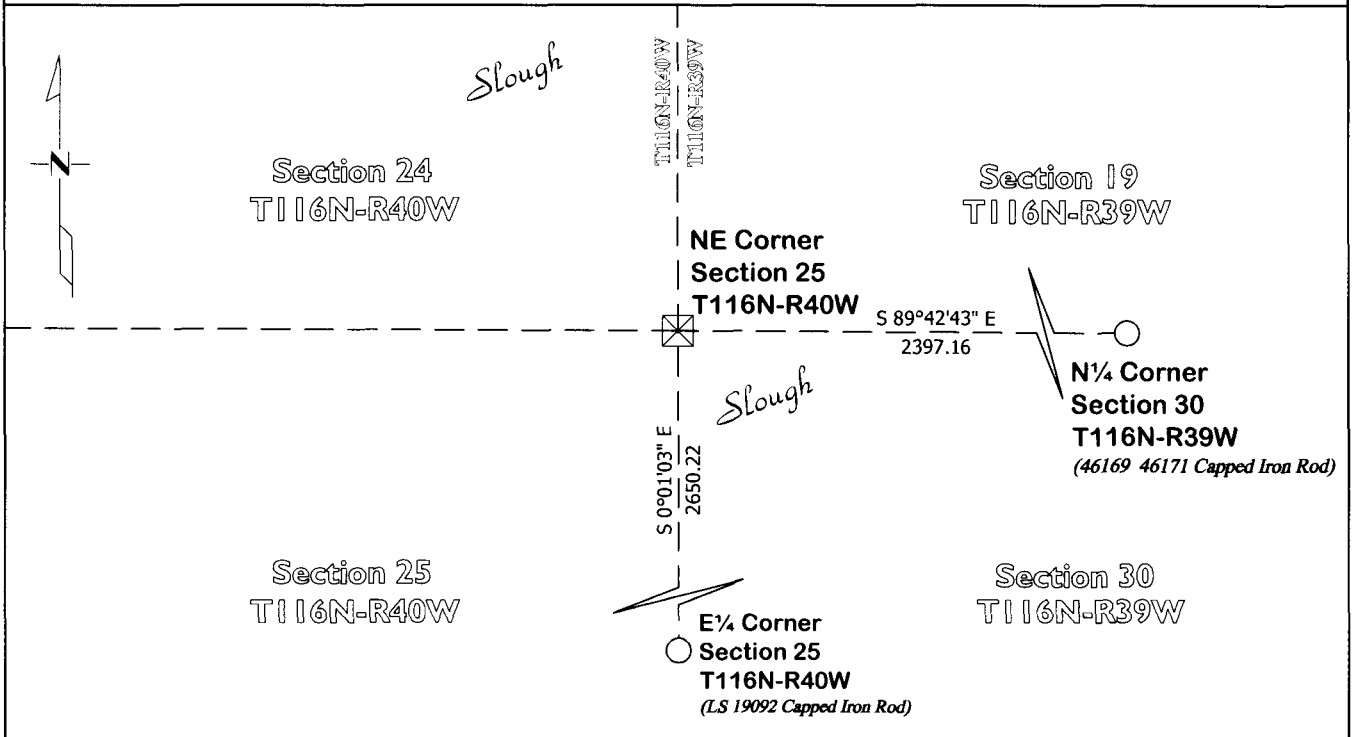
By Kelley Kauger Deputy

CERTIFICATE OF LOCATION OF GOVERNMENT CORNER

Northeast Corner of Section 25, Township 116, Range 40
Fifth Principal Meridian, State of Minnesota, County of Yellow Medicine

At the corner location shown on the sketch:

- On Aug. 21, 2013 found 6"x6"x20" Square Cut Stone Lying Flat in Slough
DATE
- left monument as found lowered monument removed monument (explain)
- On Nov. 26, 2013 placed an Iron Rod with a "46169 46171" stamped plastic cap on North side of the
DATE
6" x 6" x 20" Square Cut Stone



Statement of evidence for this corner location is on back of this page.

I hereby certify that this survey, plan, or report was prepared by me or under my direct supervision and that I am a duly Licensed Land Surveyor under the laws of the state of Minnesota.

Signature Matthew D. Runke
Date 1/3/14

Typed or Printed Name: Matthew D. Runke
Reg. No. 46171

STATEMENT OF EVIDENCE

Northeast Corner Section 25, T116N-R40W

- 1858 W.J. Neely was contracted by the United States Government Land Office to perform the Original Public Land Survey of this township boundary. Neely records in his field notes that he, "set post corner to sect. 19, 24, 25 & 30 deposited coal made mound trench & pits as per instructions"
- 1919 John Norgaard, County Surveyor, records in the County Surveyor's Record Book, page 417, dimensions to this corner position but doesn't mention what type of monument was found.
- Nov. 11, 1931 John Norgaard, County Surveyor, records in the County Surveyor's Record Book, page 538, dimensions to this corner position but doesn't mention what type of monument was found.
- 1961 Minnesota Department of Transportation Highway Right of Way Map No. 3-62A, notes a "stone inp." and dimensions from the highway center line to this corner position.
- March 19, 1998 Duane A. Bonnema, LS 14895, notes "IP" at this corner position.
- Nov. 19, 2008 Matthew D. Runke, LS 46171, notes a "Found Iron Monument from former Survey" and dimensions to this corner position.
- Unknown Dates Roy Marhart, LS 19092, while performing surveys in Section 24 & 25 of T116N-R40W and Section 30 of T116-R39W notes he found and "Iron Pipe" at this corner position.
- Nov. 13, 2012 Matthew D. Runke, LS 46171, searched for and was unable to recover the Iron Monument at this corner position. Runke then probed an area extending 2.0' North, 2.0' South, 2.0' East and 2.0' West of the former Iron Monument location and found a 6"x6"x20" square cut stone lying flat. This stone is typical of the type of monument John Norgaard would have used to perpetuate section corner positions. This stone was apparently set in 1919 as part of his survey. The Minnesota Department of Transportation recovered this stone in 1961 as part of their survey work for the highway, and their record distance is within 2' of the current measurements between the stone and highway center line. This stone also fits well with the 1919 and the 1930 Norgaard Survey dimensions along the north line of Section 30, T116N-R39W. The 6"x6"x20" square cut stone appears to be the best evidence of the location of this section corner. An Iron Rod with a "46169 46171" stamped plastic cap was set along the North side of the stone.