

# CERTIFICATE OF LOCATION OF GOVERNMENT CORNER

NORTH QUARTER Corner of Section 17, Township 114, Range 46, 5TH P.M.

STATE OF MINNESOTA, County of YELLOW MEDICINE

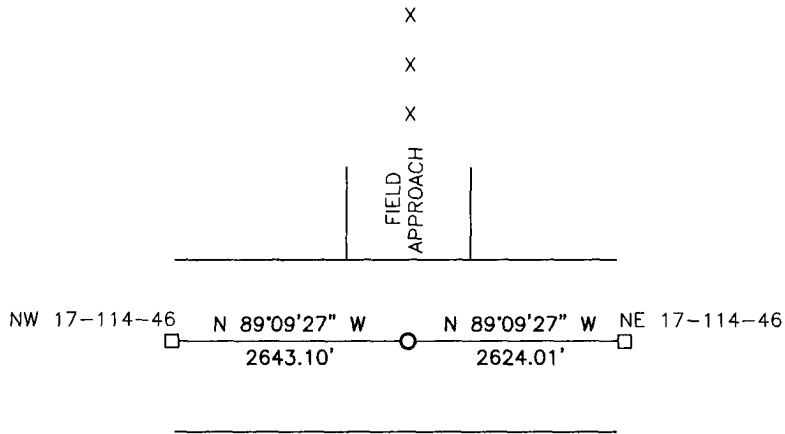
At the corner location shown on the sketch:

On \_\_\_\_\_ found a \_\_\_\_\_  
DATE

left monument as found,  lowered monument,  removed monument (explain)

On 5/28/13 placed a 5/8" iron w/seal #50343  
DATE

### SKETCH OF REFERENCE TIES

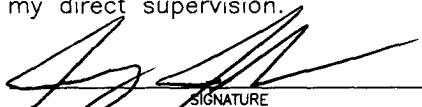


Minnesota State Plane Coordinate  
System Yellow Medicine County Datum  
NAD83 (1996)

N: 154210.426  
E: 362183.323

Statement of evidence relative to this corner location is on back of page.

I hereby certify that this document and the data contained herein was prepared by me or under my direct supervision.

  
SIGNATURE 2-21-14  
DATE

Registration No. 50343

Land Surveyor,  Professional Engineer  
 County Surveyor,  County Engineer

OFFICE OF THE COUNTY RECORDER

County of \_\_\_\_\_

I hereby certify that this document was filed in the Co. Recorders office at \_\_\_\_\_ .M on the \_\_\_\_\_ day of \_\_\_\_\_ A.D. 20 \_\_\_\_\_

County Recorder \_\_\_\_\_

By \_\_\_\_\_, Deputy

DOCUMENT NO. \_\_\_\_\_

Statement of Evidence

In 1871, Lewis Harrington did the original subdivision of the township.

On May 28, 2013, Bueltel-Moseng Land Surveying set a 5/8" iron with seal #50343 on line between section corners and in line with fence to the north. The corner is in the center of the road.

**Doc# 259444 Fee: \$0.00 2 Pages**

Property & Public Services

Property Records Division

Yellow Medicine County, Minnesota

I hereby certify that the within instrument  
was filed on February 6, 2014 at 9:40 AM

Janel Timm, Yellow Medicine County Recorder

By Dail Rohrk Deputy