

CERTIFICATE OF LOCATION OF GOVERNMENT CORNER

NORTHEAST Corner of Section 18, Township 114, Range 46, 5TH P.M.

STATE OF MINNESOTA, County of YELLOW MEDICINE

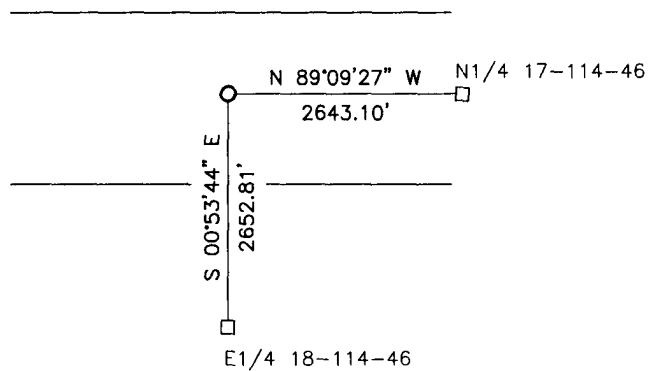
At the corner location shown on the sketch:

On _____ found a _____
DATE

left monument as found, lowered monument, removed monument (explain)

On 5/28/13 placed a 5/8" iron w/seal #50343
DATE

SKETCH OF REFERENCE TIES




Minnesota State Plane Coordinate
System Yellow Medicine County Datum
NAD83 (1996)

N: 154249.288
E: 359540.509

Statement of evidence relative to this corner location is on back of page.

I hereby certify that this document and the data contained herein was prepared by me or under my direct supervision.


SIGNATURE
DATE 2-4-14

Registration No. 50343

Land Surveyor, Professional Engineer
 County Surveyor, County Engineer

OFFICE OF THE COUNTY RECORDER

County of _____

I hereby certify that this document was filed in the Co. Recorders office at _____ .M on the _____ day of _____ A.D. 20 _____

County Recorder _____

By _____, Deputy

DOCUMENT NO. _____

Statement of Evidence

In 1871, Lewis Harrington did the original subdivision of the township.

In 1976, Moseng Land Surveying set a 5/8" iron with seal #11943 at the corner by using recorded ties from the Yellow Medicine County Highway Department.

On May 28, 2013, Bueltel-Moseng Land Surveying set a 5/8" iron with seal #50343 by projecting line from the southeast corner through the east quarter corner and using the recorded distances from the survey done by Moseng Land Surveying in 1976.

Doc# 259446 Fee: \$0.00 2 Pages

Property & Public Services

Property Records Division

Yellow Medicine County, Minnesota

I hereby certify that the within instrument
was filed on February 6, 2014 at 9:50 AM

Janel Timm, Yellow Medicine County Recorder

By Janel Rohlf Deputy