

# CERTIFICATE OF LOCATION OF GOVERNMENT CORNER

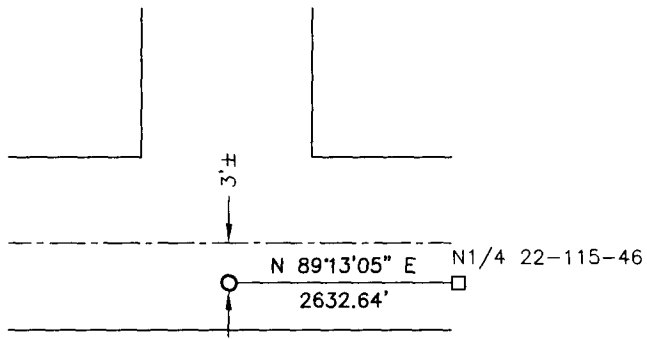
NORTHEAST Corner of Section 21, Township 115, Range 46, 5TH P.M.

STATE OF MINNESOTA, County of YELLOW MEDICINE

At the corner location shown on the sketch:

- On 8/16/13 found a stone  
DATE
- left monument as found,  lowered monument,  removed monument (explain)
- On 8/16/13 placed a 5/8" iron w/seal #50343  
DATE

### SKETCH OF REFERENCE TIES



Minnesota State Plane Coordinate  
System Yellow Medicine County Datum  
NAD83 (1996)  
N: 180447.679  
E: 370187.410

Statement of evidence relative to this corner location is on back of page.

I hereby certify that this document and the data contained herein was prepared by me or under my direct supervision.

[Signature] 2-4-14  
SIGNATURE DATE

Registration No. 50343

- Land Surveyor,  Professional Engineer
- County Surveyor,  County Engineer

### OFFICE OF THE COUNTY RECORDER

County of \_\_\_\_\_

I hereby certify that this document was filed in the Co. Recorders office at \_\_\_\_\_ .M on the \_\_\_\_\_ day of \_\_\_\_\_ A.D. 20 \_\_\_\_\_

County Recorder \_\_\_\_\_

By \_\_\_\_\_, Deputy

DOCUMENT NO. \_\_\_\_\_

## Statement of Evidence

In 1871, Lewis Harrington did the original subdivision of the township.

In 2010, the Yellow Medicine County Highway Department found a stone at the corner.

On August 16, 2013, Bueltel-Moseng Land Surveying found a stone at the corner. We set a 5/8" iron with seal #50343 over the stone. It is in centerline of road to the north and 3'± south of center line of east-west road.

**Doc# 259447 Fee: \$0.00 2 Pages**

Property & Public Services

Property Records Division

Yellow Medicine County, Minnesota

I hereby certify that the within instrument  
was filed on February 6, 2014 at 9:55 AM

Janel Timm, Yellow Medicine County Recorder

By Janel Rohlik Deputy