

CERTIFICATE OF LOCATION OF GOVERNMENT CORNER

NORTH QUARTER Corner of Section 31, Township 115, Range 44, 5TH P.M.

STATE OF MINNESOTA, County of YELLOW MEDICINE

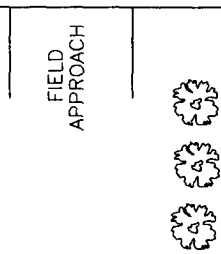
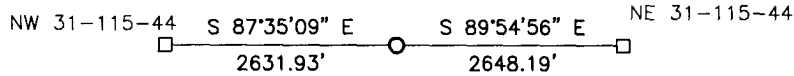
At the corner location shown on the sketch:

On _____ found a _____
DATE

left monument as found, lowered monument, removed monument (explain)

On 6/5/13 placed a 5/8" iron w/seal #43844
DATE

SKETCH OF REFERENCE TIES



Minnesota State Plane Coordinate
System Yellow Medicine County Datum
NAD83 (1996)
N: 169792.375
E: 420522.709

Statement of evidence relative to this corner location is on back of page.

I hereby certify that this document and the data contained herein was prepared by me or under my direct supervision


SIGNATURE

2/4/14
DATE

Registration No. 43844

- Land Surveyor, Professional Engineer
 County Surveyor, County Engineer

OFFICE OF THE COUNTY RECORDER

County of _____

I hereby certify that this document was filed in the Co. Recorders office at _____ .M on the _____ day of _____ A.D. 20 _____

County Recorder _____

By _____, Deputy

DOCUMENT NO. _____

Statement of Evidence

In 1871, Lewis Harrington did the original subdivision of the township.

On June 5, 2013, Bueltel-Moseng Land Surveying dug with a backhoe and found nothing. We set a 5/8" iron with seal #43844 in the center of the road and in line with the tree line to the south.

Doc# 259452 Fee: \$0.00 2 Pages
Property & Public Services
Property Records Division
Yellow Medicine County, Minnesota
I hereby certify that the within instrument
was filed on February 6, 2014 at 10:20 AM

Janel Timm, Yellow Medicine County Recorder

By *Janel Rohlf* Deputy