

CERTIFICATE OF LOCATION OF GOVERNMENT CORNER

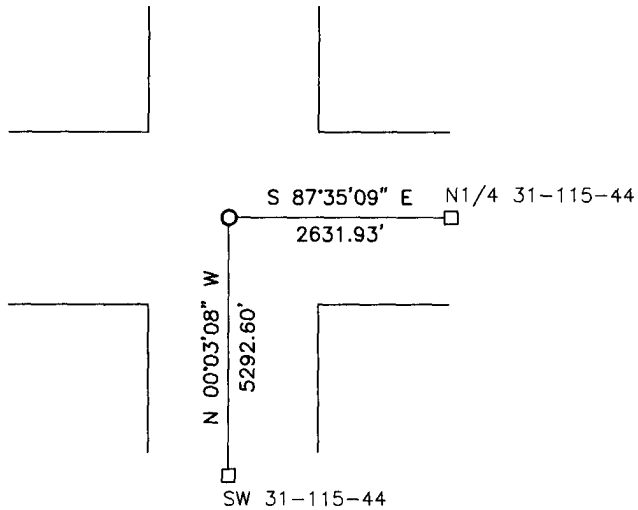
NORTHEAST Corner of Section 36, Township 115, Range 45, 5TH P.M.

STATE OF MINNESOTA, County of YELLOW MEDICINE

At the corner location shown on the sketch:

- On 6/5/13 found a 6"X6"X18" granite monument
DATE
- left monument as found, lowered monument, removed monument (explain)
- On 6/5/13 placed a 5/8" iron w/seal 43844
DATE

SKETCH OF REFERENCE TIES



Minnesota State Plane Coordinate
 System Yellow Medicine County Datum
 NAD83 (1996)
 N: 169903.240
 E: 417893.119

Statement of evidence relative to this corner location is on back of page.

I hereby certify that this document and the data contained herein was prepared by me or under my direct supervision.

[Handwritten Signature]
 SIGNATURE

2/4/14
 DATE

Registration No. 43844

- Land Surveyor, Professional Engineer
- County Surveyor, County Engineer

OFFICE OF THE COUNTY RECORDER

County of _____

I hereby certify that this document was filed in the Co. Recorders office at _____ .M on the _____ day of _____ A.D. 20 _____

County Recorder _____

By _____, Deputy

DOCUMENT NO. _____

Statement of Evidence

In 1858, W.J. Neely did the original survey of the west line of the township.

On June 5, 2013, Bueltel-Moseng Land Surveying dug with backhoe and found a 12" field stone. We removed the field stone, continued digging, and found a 6"x6"x18" granite monument below. We placed an iron on the south side of granite monument and placed a 5/8" iron with seal #43844 at the surface of the road.

Doc# 259454 Fee: \$0.00 2 Pages

Property & Public Services

Property Records Division

Yellow Medicine County, Minnesota

I hereby certify that the within instrument
was filed on February 6, 2014 at 10:30 AM

Janel Timm, Yellow Medicine County Recorder

By Jail Rohlik Deputy