

# CERTIFICATE OF LOCATION OF GOVERNMENT CORNER

EAST QUARTER Corner of Section 28, Township 114, Range 43, 5TH P.M.

STATE OF MINNESOTA, County of YELLOW MEDICINE

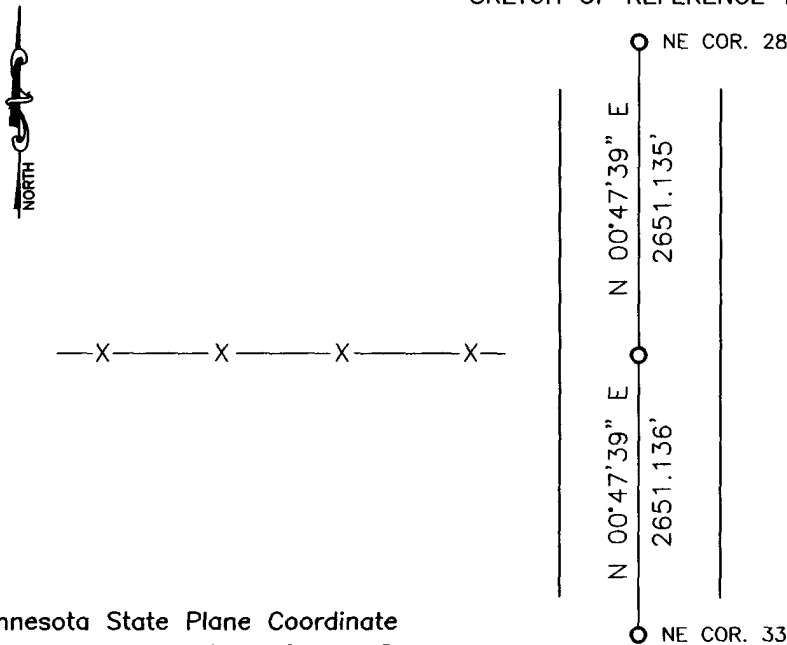
At the corner location shown on the sketch:

On \_\_\_\_\_ found a \_\_\_\_\_  
DATE

left monument as found,  lowered monument,  removed monument (explain)

On 05-02-2013 placed a 5/8" iron with seal #43844  
DATE

### SKETCH OF REFERENCE TIES

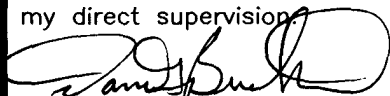


Minnesota State Plane Coordinate  
System Yellow Medicine County Datum  
NAD83 (1996)

N: 140289.168  
E: 465619.922

Statement of evidence relative to this corner location is on back of page.

I hereby certify that this document and the data contained herein was prepared by me or under my direct supervision.

  
SIGNATURE

6/13/13  
DATE

Registration No. 43844

Land Surveyor,  Professional Engineer  
 County Surveyor,  County Engineer

OFFICE OF THE COUNTY RECORDER

County of \_\_\_\_\_

I hereby certify that this document was filed in the Co. Recorders office at \_\_\_\_\_ .M on the \_\_\_\_\_ day of \_\_\_\_\_ A.D. 20 \_\_\_\_\_

County Recorder \_\_\_\_\_

By \_\_\_\_\_, Deputy

DOCUMENT NO. \_\_\_\_\_

## Statement of Evidence

In 1867, David Watson did the original subdivision of the township.

On May 2, Bueltel-Moseng Land Surveying set a  $\frac{5}{8}$ " iron with seal #43844 midway and on line between section corners. In center line and in line with fence to the West.

Doc# 259455 Fee: \$0.00 2 Pages

Property & Public Services  
Property Records Division  
Yellow Medicine County, Minnesota  
I hereby certify that the within instrument  
was filed on February 6, 2014 at 10:35 AM

Janel Timm, Yellow Medicine County Recorder

By *Janel Bohk* Deputy