

CERTIFICATE OF LOCATION OF GOVERNMENT CORNER

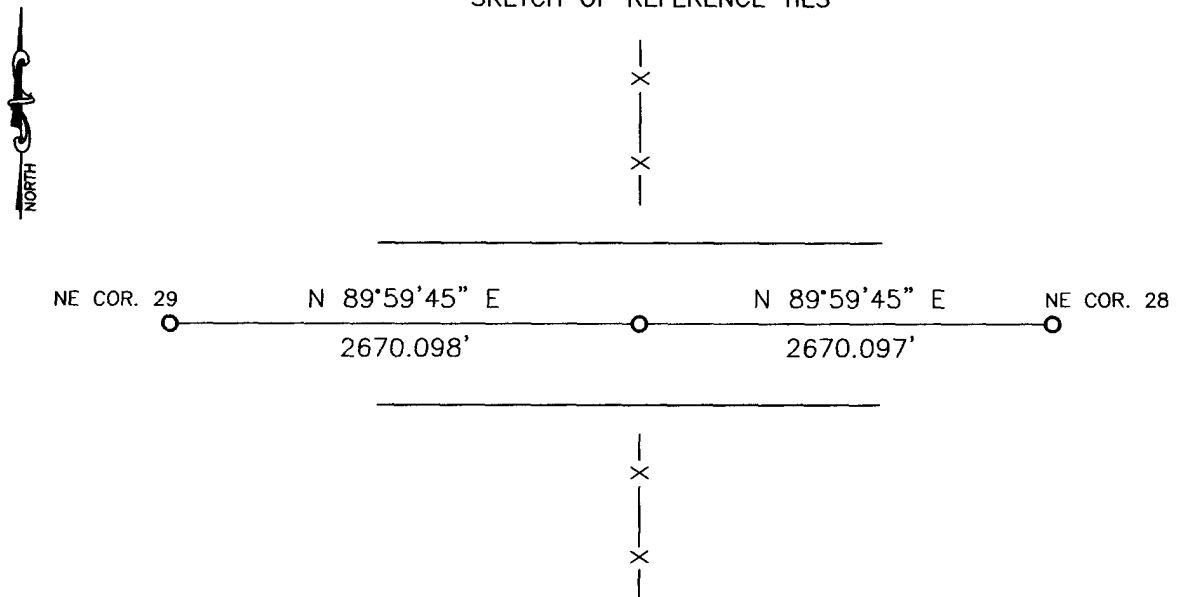
NORTH QUARTER Corner of Section 28, Township 114, Range 43, 5TH P.M.

STATE OF MINNESOTA, County of YELLOW MEDICINE

At the corner location shown on the sketch:

- On _____ found a _____
- left monument as found, lowered monument, removed monument (explain)
- On 05-02-2013 placed a 5/8" iron with seal #43844

SKETCH OF REFERENCE TIES



Minnesota State Plane Coordinate
 System Yellow Medicine County Datum
 NAD83 (1996)
 N: 142939.849
 E: 426986.575

Statement of evidence relative to this corner location is on back of page.

I hereby certify that this document and the data contained herein was prepared by me or under my direct supervision.

[Signature] 6/3/13
SIGNATURE DATE

Registration No. 43844

- Land Surveyor, Professional Engineer
- County Surveyor, County Engineer

OFFICE OF THE COUNTY RECORDER
 County of _____

I hereby certify that this document was filed in the Co. Recorders office at _____ .M on the _____ day of _____ A.D. 20 _____

County Recorder _____
 By _____, Deputy

DOCUMENT NO. _____

Statement of Evidence

In 1867, David Watson did the original subdivision of the township.

On May 2, 2013, Bueltel-Moseng Land Surveying set a 5/8" iron with seal \$43844 midway and online between section corners, in centerline and in line with occupation lines to the North and South.

Doc# 259456 Fee: \$0.00 2 Pages

Property & Public Services
Property Records Division
Yellow Medicine County, Minnesota

I hereby certify that the within instrument
was filed on February 6, 2014 at 10:40 AM

Janel Timm, Yellow Medicine County Recorder

By Jane Rohlk Deputy