

CERTIFICATE OF LOCATION OF GOVERNMENT CORNER

EAST QUARTER Corner of Section 29, Township 114, Range 43, 5TH P.M.

STATE OF MINNESOTA, County of YELLOW MEDICINE

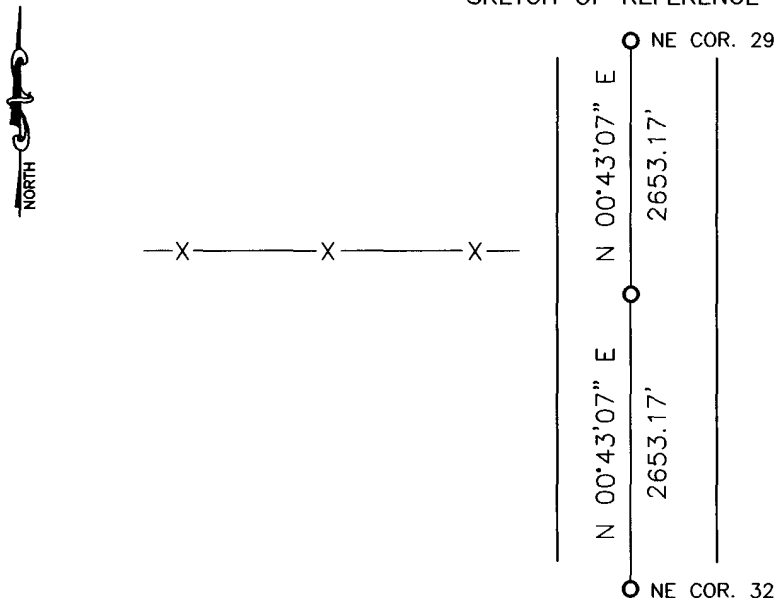
At the corner location shown on the sketch:

On _____ found a _____
DATE

left monument as found, lowered monument, removed monument (explain)

On 05-02-2013 placed a 3" survey spike with seal #43844
DATE

SKETCH OF REFERENCE TIES

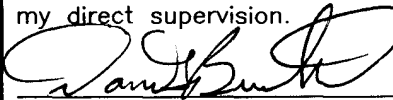


Minnesota State Plane Coordinate
 System Yellow Medicine County Datum
 NAD83 (1996)

N: 140286.688
 E: 460283.206

Statement of evidence relative to this corner location is on back of page.

I hereby certify that this document and the data contained herein was prepared by me or under my direct supervision.


SIGNATURE 6/3/13
DATE

Registration No. 43844

Land Surveyor, Professional Engineer
 County Surveyor, County Engineer

OFFICE OF THE COUNTY RECORDER

County of _____

I hereby certify that this document was filed in the Co. Recorders office at _____ .M on the _____ day of _____ A.D. 20 _____

County Recorder _____

By _____, Deputy

DOCUMENT NO. _____

Statement of Evidence

In 1867, David Watson did the original subdivision of the township.

On May 2, 2013, Bueltel-Moseng Land Surveying set a 3" survey spike with seal #43844 midway and on line between section corners. The corner is 2 feet south of fence to the west.

Doc# 259457 Fee: \$0.00 2 Pages

Property & Public Services
Property Records Division
Yellow Medicine County, Minnesota
I hereby certify that the within instrument
was filed on February 6, 2014 at 10:45 AM

Janel Timm, Yellow Medicine County Recorder

By Janel Rohlik Deputy