

CERTIFICATE OF LOCATION OF GOVERNMENT CORNER

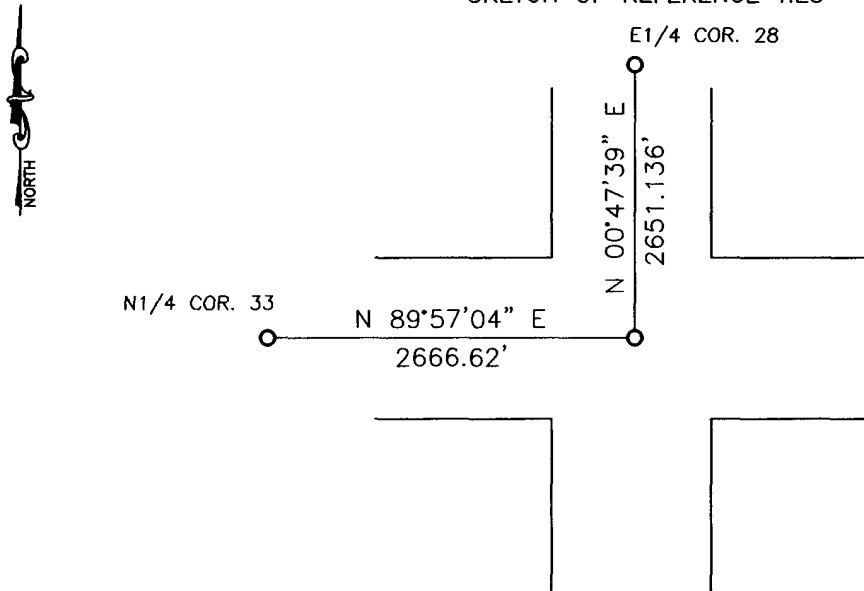
NORTHEAST Corner of Section 33, Township 114, Range 43, 5TH P.M.

STATE OF MINNESOTA, County of YELLOW MEDICINE

At the corner location shown on the sketch:

- On 04-25-13 found a 12" bridge spike over a 6"x6" square cut granite monument
DATE
2.5 feet below the surface
- left monument as found, lowered monument, removed monument (explain)
- On 05-02-2013 placed a 5/8" iron with seal #43844 over found square cut granite
DATE
monument.

SKETCH OF REFERENCE TIES



Minnesota State Plane Coordinate
System Yellow Medicine County Datum
NAD83 (1996)

N: 137638.286
E: 465583.171

Statement of evidence relative to this corner location is on back of page.

I hereby certify that this document and the data contained herein was prepared by me or under my direct supervision

[Signature] 6/3/13
SIGNATURE DATE

Registration No. 43844

- Land Surveyor, Professional Engineer
- County Surveyor, County Engineer

OFFICE OF THE COUNTY RECORDER

County of _____

I hereby certify that this document was filed in the Co. Recorders office at _____ M on the _____ day of _____ A.D. 20 _____

County Recorder _____

By _____, Deputy

DOCUMENT NO. _____

Statement of Evidence

In 1867, David Watson did the original subdivision of the township.

On April 25, 2013, Bueltel-Moseng Land Surveying found 12" spike over a 6"x6" square cut granite monument two and half feet below the surface.

On May 2, 2013, Bueltel-Moseng Land Surveying set $\frac{5}{8}$ " iron with seal #43844 over found square cut granite monument.

Doc# 259459 Fee: \$0.00 2 Pages

Property & Public Services
Property Records Division
Yellow Medicine County, Minnesota

I hereby certify that the within instrument
was filed on February 6, 2014 at 10:55 AM

Janel Timm, Yellow Medicine County Recorder

By Dave Rohlk Deputy