

Property & Public Services
Property Records Division
Yellow Medicine County, Minnesota
I hereby certify that the within instrument
was filed on March 6, 2014 at 9:40 AM

Janel Timm, Yellow Medicine County Recorder

By Kelly Kruger Deputy

CERTIFICATE OF LOCATION OF GOVERNMENT CORNER

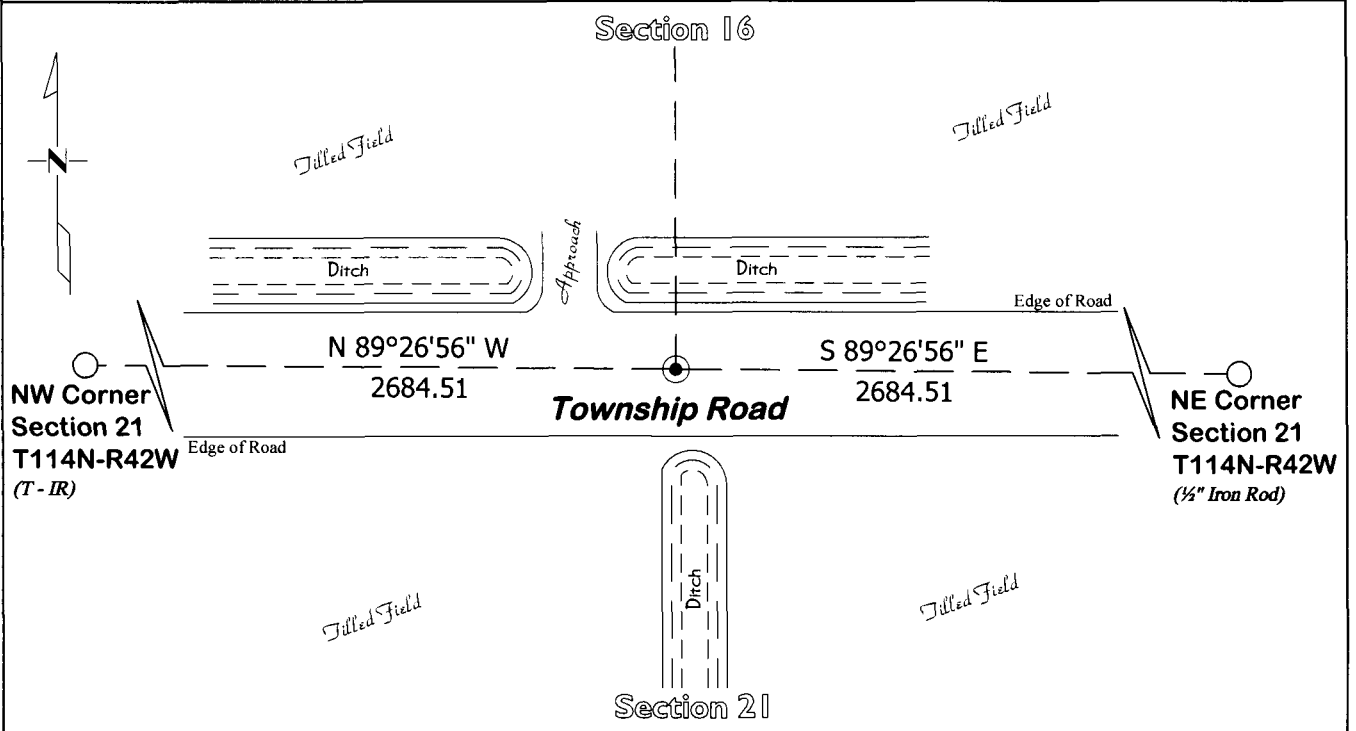
North Quarter Corner of Section 21, Township 114, Range 42
Fifth Principal Meridian, State of Minnesota, County of Yellow Medicine

At the corner location shown on the sketch:

On Feb. 24, 2014 found Nothing
DATE

left monument as found lowered monument removed monument (explain)

On Mar. 3, 2014 placed a Iron Rod with a "46169 46171" stamped plastic cap
DATE



Statement of evidence for this corner location is on back of this page.

I hereby certify that this survey, plan, or report was prepared by me or under my direct supervision and that I am a duly Licensed Land Surveyor under the laws of the state of Minnesota.

Signature [Signature]

Typed or Printed Name: Joshua M. Stern

Date 3/4/14

Reg. No. 46169

STATEMENT OF EVIDENCE

North Quarter Corner Section 21, T114N-R42W

- 1867 David Watson was contracted by the United States Government Land Office to perform the Original Public Land Survey in this township. Watson records in his field notes that he "Set $\frac{1}{4}$ post in Slough."
- Aug. 1913 John Norgaard, County Surveyor, records in the County Surveyor's Record Book, page 301 "set stone on line and equal distance between section corners" and dimensions to this corner position.
- Mar. 3, 2014 Joshua M. Stern, LS 46169, searched with a metal locator at this corner position and found nothing. An Iron Rod with a "46169 46171" stamped plastic cap was set online and equal distance between the northeast and northwest corners of this section. This matches the 1913 Norgaard note of "on line and equal distance between Section corners" and fits use lines within the section. No large excavation was done for this corner due to the large amount of frost and because it falls within the road surface.