

CERTIFICATE OF LOCATION OF GOVERNMENT CORNER

SOUTH QUARTER Corner of Section 34, Township 114, Range 40, 5TH P.M.

STATE OF MINNESOTA, County of YELLOW MEDICINE

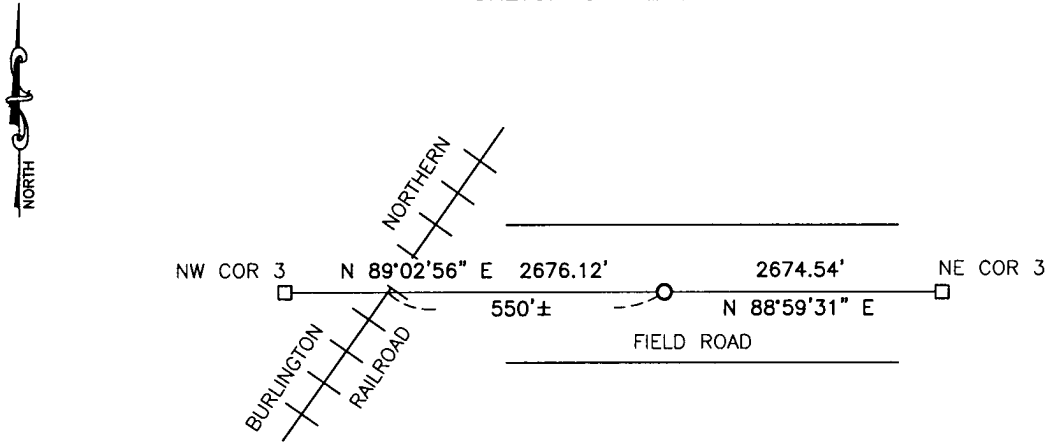
At the corner location shown on the sketch:

On 4/11/14 found a broken off cast iron monument
DATE

left monument as found, lowered monument, removed monument (explain)

On 4/11/14 placed a cast iron monument
DATE

SKETCH OF REFERENCE TIES



Minnesota State Plane Coordinate System Yellow Medicine County Datum NAD83 (1996) Corner is 550'± East of centerline of railroad track.

N: 132466.344
 E: 563758.198

Statement of evidence relative to this corner location is on back of page.

I hereby certify that this document and the data contained herein was prepared by me or under my direct supervision

[Signature] 1/14/15
SIGNATURE DATE

Registration No. 43844

- Land Surveyor, Professional Engineer
- County Surveyor, County Engineer

OFFICE OF THE COUNTY RECORDER

County of _____

I hereby certify that this document was filed in the Co. Recorders office at _____ .M on the _____ day of _____ A.D. 20 _____

County Recorder _____

By _____, Deputy

DOCUMENT NO. _____

Statement of Evidence

In 1858, W. J. Neely did the original survey of the north line of the township.

In 1916, John Norgaard, County Surveyor, set a stake midway and on line between the section corners.

On July 28, 1972, Minnesota Highway Department found a 6"x6"x18" limestone monument, wood stake, and field stone at the corner. Set cast iron monument on top of limestone monument.

On April 11, 2014, Bueltel-Moseng Land Surveying found broken off cast iron monument with t-bar next to it 1.5 feet below the surface. Set cast iron monument over the broken off cast iron monument.

Doc# 261543 Fee: \$0.00 2 Pages

Property & Public Services
Property Records Division
Yellow Medicine County, Minnesota

I hereby certify that the within instrument
was filed on February 23, 2015 at 10:20 AM

Janel Timm, Yellow Medicine County Recorder

By Kelly Kuger Deputy