

# CERTIFICATE OF LOCATION OF GOVERNMENT CORNER

NORTH QUARTER Corner of Section 35, Township 114, Range 43, 5TH P.M.

STATE OF MINNESOTA, County of YELLOW MEDICINE

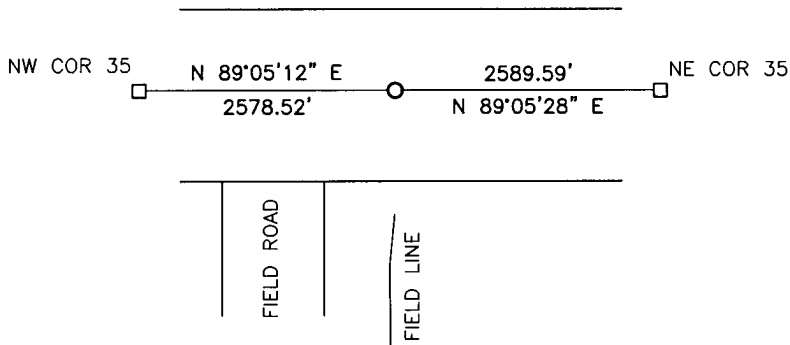
At the corner location shown on the sketch:

On 7/11/14 found a railroad spike  
DATE

left monument as found,  lowered monument,  removed monument (explain)

On 7/11/14 placed a 5/8" iron w/seal #43844  
DATE

### SKETCH OF REFERENCE TIES



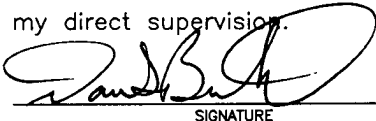
Minnesota State Plane Coordinate  
System Yellow Medicine County Datum  
NAD83 (1996)

NO TIES

N: 137628.779  
E: 473379.126

Statement of evidence relative to this corner location is on back of page.

I hereby certify that this document and the data contained herein was prepared by me or under my direct supervision.

  
SIGNATURE

1/14/15  
DATE

Registration No. 43844

- Land Surveyor,  Professional Engineer
- County Surveyor,  County Engineer

### OFFICE OF THE COUNTY RECORDER

County of \_\_\_\_\_

I hereby certify that this document was filed in the Co. Recorders office at \_\_\_\_\_ .M on the \_\_\_\_\_ day of \_\_\_\_\_ A.D. 20 \_\_\_\_\_

County Recorder \_\_\_\_\_

By \_\_\_\_\_, Deputy

DOCUMENT NO. \_\_\_\_\_

## Statement of Evidence

In 1867, David Watson did the original subdivision of the township.

On July 11, 2014, Bueltel-Moseng Land Surveying found a railroad spike at the corner. We removed the spike and probed around it. Found nothing. Set  $\frac{5}{8}$ " iron with seal #43844 in the location of found railroad spike.

**Doc# 261545 Fee: \$0.00 2 Pages**

Property & Public Services  
Property Records Division  
Yellow Medicine County, Minnesota

I hereby certify that the within instrument  
was filed on February 23, 2015 at 10:30 AM

Janel Timm, Yellow Medicine County Recorder

By Kelly Kauger Deputy