

CERTIFICATE OF LOCATION OF GOVERNMENT CORNER

NORTHEAST Corner of Section 36, Township 114, Range 43, 5TH P.M.

STATE OF MINNESOTA, County of YELLOW MEDICINE

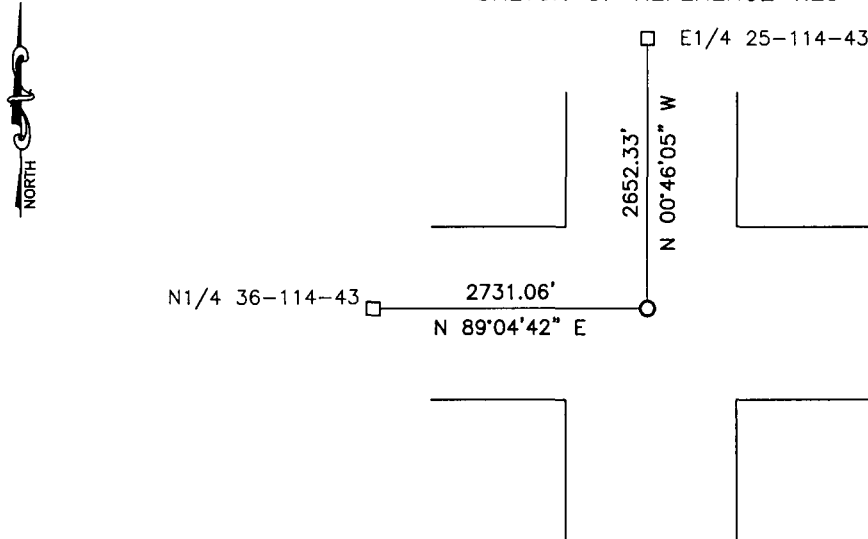
At the corner location shown on the sketch:

On 7/11/14 found a 6"x6" jasper stone
DATE

left monument as found, lowered monument, removed monument (explain)

On 7/11/14 placed a 5/8" iron w/seal #43844
DATE

SKETCH OF REFERENCE TIES



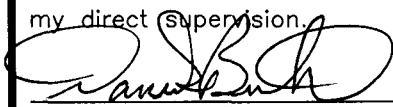
Minnesota State Plane Coordinate
System Yellow Medicine County Datum
NAD83 (1996)

NO TIES

N: 137769.115
E: 481447.531

Statement of evidence relative to this corner location is on back of page.

I hereby certify that this document and the data contained herein was prepared by me or under my direct supervision.


SIGNATURE 1/14/15
DATE

Registration No. 43844

- Land Surveyor, Professional Engineer
- County Surveyor, County Engineer

OFFICE OF THE COUNTY RECORDER

County of _____

I hereby certify that this document was filed in the Co. Recorders office at _____ .M on the _____ day of _____ A.D. 20 _____

County Recorder _____

By _____, Deputy

DOCUMENT NO. _____

Statement of Evidence

In 1858, W.J. Neely did the original township lines of the township.

In October, 1915, L.S. Hoffman, Department County Surveyor, recorded a jasper stone at the corner.

On July 11, 2014, Bueltel-Moseng Land Surveying dug with a backhoe and found a 12" spike at the surface, removed and found a $\frac{3}{4}$ " pipe. Removed, dug lower, and found a 12" field stone. Removed, dug lower, and found a 10" field stone. Removed, dug lower, and found 6"x6" square cut jasper stone. Set $\frac{5}{8}$ " iron with seal #43844 over found jasper stone at the road surface.

Doc# 261546 Fee: \$0.00 2 Pages

Property & Public Services
Property Records Division
Yellow Medicine County, Minnesota
I hereby certify that the within instrument
was filed on February 23, 2015 at 10:35 AM

Janel Timm, Yellow Medicine County Recorder

By Kelly Kauger Deputy