

# CERTIFICATE OF LOCATION OF GOVERNMENT CORNER

SOUTH QUARTER Corner of Section 36, Township 114, Range 43, 5TH P.M.

STATE OF MINNESOTA, County of YELLOW MEDICINE

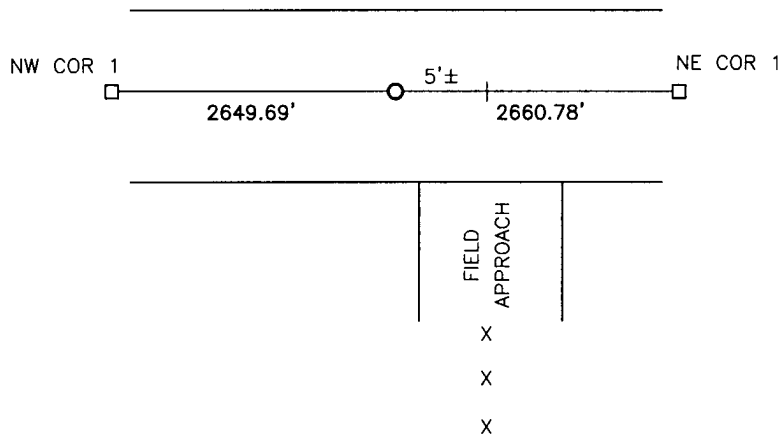
At the corner location shown on the sketch:

On \_\_\_\_\_ found a \_\_\_\_\_  
DATE

left monument as found,  lowered monument,  removed monument (explain)

On 7/21/14 placed a cast iron monument  
DATE

### SKETCH OF REFERENCE TIES



Minnesota State Plane Coordinate  
System Yellow Medicine County Datum  
NAD83 (1996)

NO TIES

The corner is 5'± West of the fence line to the South.

N: 132412.350  
E: 478720.025

Statement of evidence relative to this corner location is on back of page.

I hereby certify that this document and the data contained herein was prepared by me or under my direct supervision.

[Signature] 1/21/15  
SIGNATURE DATE

Registration No. 43844

Land Surveyor,  Professional Engineer  
 County Surveyor,  County Engineer

OFFICE OF THE COUNTY RECORDER

County of \_\_\_\_\_

I hereby certify that this document was filed in the Co. Recorders office at \_\_\_\_\_ .M on the \_\_\_\_\_ day of \_\_\_\_\_ A.D. 20 \_\_\_\_\_

County Recorder \_\_\_\_\_

By \_\_\_\_\_, Deputy

DOCUMENT NO. \_\_\_\_\_

## Statement of Evidence

In 1859, W.J. Neely did the original survey of the north line of the township.

On November 17, 1896, O.H. Sterk found a stone at the corner.

(No date), O.H. Sterk set a hard head stone and 36" iron at the corner.

In October, 1915, Hoffman, Yellow Medicine County Surveyor found a stone and 36" iron at the corner.

On July 21, 2014, Bueltel-Moseng Land Surveying dug with backhoe and found nothing. We set a cast iron monument on line and proportionate distances between the section corners. The corner is 5'± west of fence line to the south.

**Doc# 261547 Fee: \$0.00 2 Pages**

Property & Public Services  
Property Records Division  
Yellow Medicine County, Minnesota  
I hereby certify that the within instrument  
was filed on February 23, 2015 at 10:40 AM

Janel Timm, Yellow Medicine County Recorder

By Kelly Kuger Deputy