

# CERTIFICATE OF LOCATION OF GOVERNMENT CORNER

EAST QUARTER Corner of Section 31, Township 115, Range 46, 5TH P.M.

STATE OF MINNESOTA, County of YELLOW MEDICINE

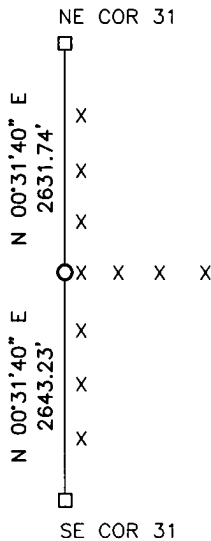
At the corner location shown on the sketch:

On \_\_\_\_\_ found a \_\_\_\_\_  
DATE

left monument as found,  lowered monument,  removed monument (explain)

On 7/18/14 placed a 5/8" iron w/seal #43844  
DATE

### SKETCH OF REFERENCE TIES



Minnesota State Plane Coordinate  
System Yellow Medicine County Datum  
NAD83 (1996)

NO TIES

N: 167483.976  
E: 359510.753

Statement of evidence relative to this corner location is on back of page.

I hereby certify that this document and the data contained herein was prepared by me or under my direct supervision.

[Signature] 11/21/15  
SIGNATURE DATE

Registration No. 43844

Land Surveyor,  Professional Engineer  
 County Surveyor,  County Engineer

OFFICE OF THE COUNTY RECORDER

County of \_\_\_\_\_

I hereby certify that this document was filed in the Co. Recorders office at \_\_\_\_\_ .M on the \_\_\_\_\_ day of \_\_\_\_\_ A.D. 20 \_\_\_\_\_

County Recorder \_\_\_\_\_

By \_\_\_\_\_, Deputy

DOCUMENT NO. \_\_\_\_\_

## Statement of Evidence

In 1871, L. Harrington did the original subdivision of the township.

On October 28, 1903, John Norgaard, County Surveyor found government mound at the corner.

On July 18, 2014, Bueltel-Moseng Land Surveying set a  $\frac{5}{8}$ " iron with seal #43844 at the corner. We held to line between the section corners and in line with fence to the east. The corner fence post is within 7'± of single proportionate distances from the 1903 survey.

**Doc# 261550 Fee: \$0.00 2 Pages**

Property & Public Services

Property Records Division

Yellow Medicine County, Minnesota

I hereby certify that the within instrument  
was filed on February 23, 2015 at 10:55 AM

Janel Timm, Yellow Medicine County Recorder

By Kelly Kauger Deputy