

Property & Public Services  
Property Records Division  
Yellow Medicine County, Minnesota

I hereby certify that the within instrument  
was filed on February 26, 2015 at 10:10 AM

Janel Timm, Yellow Medicine County Recorder

By Kelley Kruger Deputy

### CERTIFICATE OF LOCATION OF GOVERNMENT CORNER

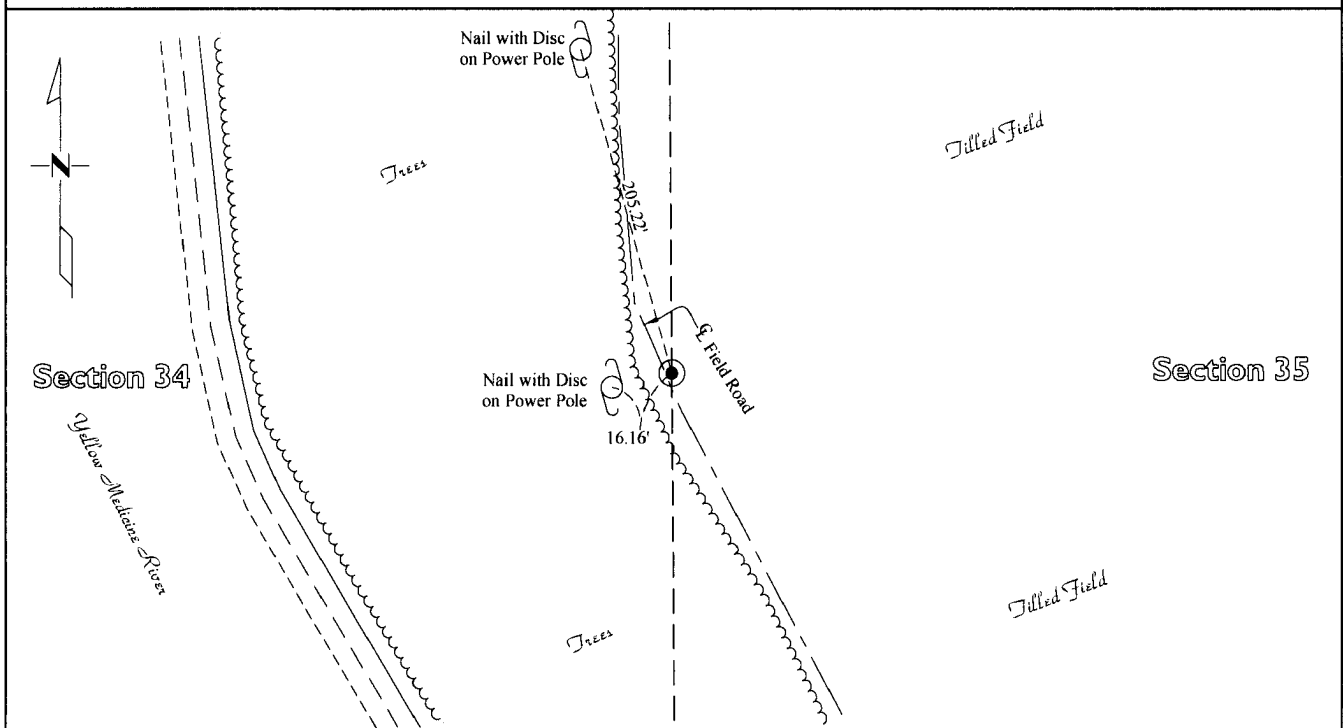
East Quarter Corner of Section 34, Township 115, Range 39  
Fifth Principal Meridian, State of Minnesota, County of Yellow Medicine

At the corner location shown on the sketch:

On Jan. 28, 2015 found a Nothing  
DATE

left monument as found       lowered monument       removed monument (explain)

On Jan. 30, 2015 placed a Iron Rod with a "46169 46171" stamped plastic cap  
DATE



Statement of evidence for this corner location is on back of this page.

I hereby certify that this survey, plan, or report was prepared by me or under my direct supervision  
and that I am a duly Licensed Land Surveyor under the laws of the state of Minnesota.

Signature [Signature]  
Date 2/24/15

Typed or Printed Name: Joshua M. Stern  
Reg. No. 46169

# **STATEMENT OF EVIDENCE**

## ***East Quarter Corner Section 34, T115N-R39W***

1864

Chas E. Davis & J. W. Webb were contracted by the United States Government Land Office to perform the Original Public Land Survey in this township. Davis & Webb records in their field notes that they "Set post in mound with pits for quarter section corner"

Jan. 30, 2015

Joshua M. Stern, LS 46169, searched with a metal locator at this corner position and found no evidence of section corner monumentation. Stern positioned this corner midway and online between the Northeast and Southeast corners of this section in accordance with the Original Government Land Office Survey dimensions. An Iron Rod with a "46169 46171" stamped plastic cap was set at this corner position.