

Property & Public Services
Property Records Division
Yellow Medicine County, Minnesota

I hereby certify that the within instrument
was filed on February 26, 2015 at 10:15 AM

Janel Timm, Yellow Medicine County Recorder

By Kelly Kauger Deputy

CERTIFICATE OF LOCATION OF GOVERNMENT CORNER

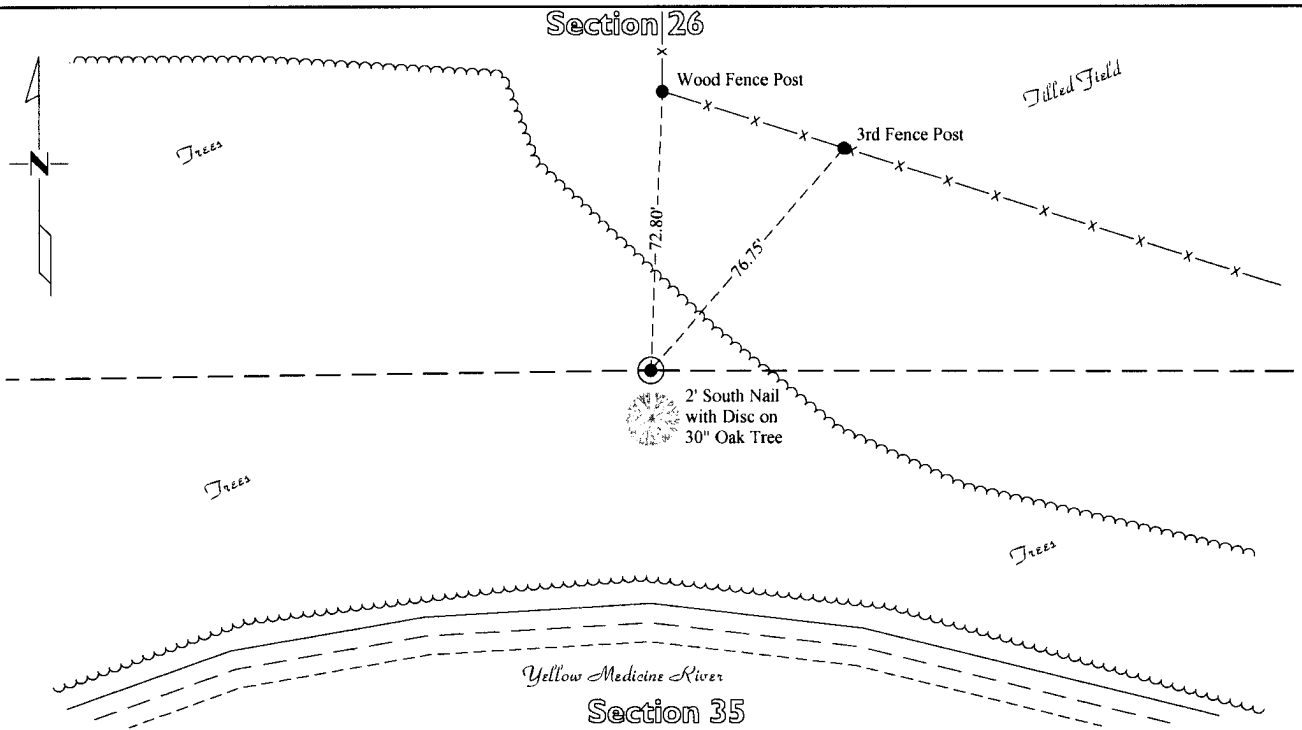
North Quarter Corner of Section 35, Township 115, Range 39
Fifth Principal Meridian, State of Minnesota, County of Yellow Medicine

At the corner location shown on the sketch:

On Jan. 28, 2015 found a Nothing
DATE

left monument as found lowered monument removed monument (explain)

On Jan. 30, 2015 placed a Iron Rod with a "46169 46171" stamped plastic cap
DATE



Statement of evidence for this corner location is on back of this page.

I hereby certify that this survey, plan, or report was prepared by me or under my direct supervision
and that I am a duly Licensed Land Surveyor under the laws of the state of Minnesota.

Signature [Handwritten Signature]
Date 2/24/15

Typed or Printed Name: Joshua M. Stern
Reg. No. 46169

STATEMENT OF EVIDENCE

North Quarter Corner Section 35, T115N-R39W

- 1864 Chas E. Davis & J. W. Webb was contracted by the United States Government Land Office to perform the Original Public Land Survey in this township. Davis & Webb records in their field notes that they "Set post in mound with pits for quarter section corner"
- 1914 John Nygaard, County Surveyor, records in County Surveyor's Record Book, page 335 "located at equal dist, sec cor but not on line, set a small stone at equal dist but north of line" and dimesnions to this corner position.
- Jan. 30, 2015 Joshua M. Stern, LS 46169, searched with a metal locator at this corner position and found no evidence of section corner monumentation. This position lands on the side slope of a hill with many small stones. Stern positioned this corner 2606 feet east of the Northwest corner of Section 35 and 2606 feet west of the Northeast corner of Section 35 and north of a straight line between the corners (per Nygaard). This position fits the fence and use lines well. An Iron Rod with a "46169 46171" stamped plastic cap was set at this corner position.